

Allgemeine Informationen

Katalog-Nr.: 18712-1-AP	GenBank-Zugangsnummer: BC007462	Reinigungsmethode: Antigen-Affinitätsreinigung
Größe: 150ul , Konzentration: 350 µg/ml von Nanodrop und 267 µg/ml durch die Bradford-Methode mit BSA als Standard;	GeneID (NCBI): 1158	Empfohlene Verdünnungen: WB 1:5000-1:50000 IHC 1:50-1:500
Wirt: Kaninchen	Vollständiger Name: creatine kinase, muscle	
Isotyp: IgG	Berechnete Masse: 43 kDa	
	Beobachtete Masse: 43 kDa	

Anwendungen

Geprüfte Anwendungen: IHC, WB,ELISA	Positivkontrollen:
In Publikationen genannte Anwendungen: WB	WB : Maushirngewebe, Maus-Dünndarmgewebe, Mausherzgewebe
Getestete Reaktivität: Human, Maus, Ratte	IHC : Maus-Skelettmuskelgewebe, Rattenherzgewebe
Zitierte Arten: Maus, Bakterium	
Hinweis-IHC: Antigendemaskierung mit TE-Puffer pH 9,0 empfohlen. (*) Wahlweise kann die Antigendemaskierung auch mit Citratpuffer pH 6,0 erfolgen.	

Hintergrundinformationen

CKM, also named as CKMM and M-CK, is a member of the ATP:guanido phosphotransferase protein family. It is a cytoplasmic enzyme involved in energy homeostasis and is an important serum marker for myocardial infarction. CKM reversibly catalyzes the transfer of phosphate between ATP and various phosphogens such as creatine phosphate. It acts as a homodimer in striated muscle as well as in other tissues, and as a heterodimer with a similar brain isozyme in heart. CK isoenzymes play a central role in energy transduction in tissues with large, fluctuating energy demands, such as skeletal muscle, heart, brain and spermatozoa. CK MB consists of a dimer of nonidentical chains. With MM being the major form in skeletal muscle and myocardium, MB existing in myocardium, and BB existing in many tissues, especially brain. Inactivation of creatine kinase by gliotoxin was accompanied by the formation of a 37-kDa form of the enzyme. This oxidized form of creatine kinase was rapidly reconverted to the 42 kDa species by the addition of reducing agents concomitant with restoration of activity.(PMID: 10827185). This antibody is specific to CKM.

Bemerkenswerte Veröffentlichungen

Verfasser	Pubmed ID	Journal	Anwendung
Jing Hao	32990380	Cell Prolif	WB
Eric P Mosher	34561299	Mol Pharmacol	WB
Ying Li	34548056	BMC Musculoskelet Disord	WB

Lagerung

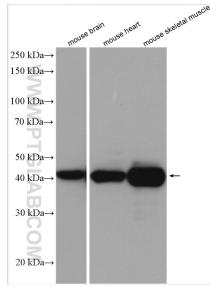
Lagerungsbedingungen:
Bei -20°C lagern. Nach dem Versand ein Jahr lang stabil
Lagerungspuffer:
PBS mit 0.02% Natriumazid und 50% Glycerin pH 7.3.
 Aliquotieren ist nicht notwendig bei -20°C Lagerung

*** 20ul-Größen enthalten 0.1% BSA

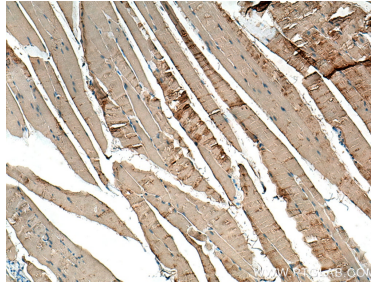
For technical support and original validation data for this product please contact:
 T: 1 (888) 4PTGLAB (1-888-478-4522) (toll free in USA), or 1(312) 455-8498 (outside USA)
 E: proteintech@ptglab.com
 W: ptglab.com

This product is exclusively available under Proteintech Group brand and is not available to purchase from any other manufacturer.

Ausgewählte Validierungsdaten



Various lysates were subjected to SDS PAGE followed by western blot with 18712-1-AP (CKM-Specific antibody) at dilution of 1:10000 incubated at room temperature for 1.5 hours.



Immunohistochemical analysis of paraffin-embedded mouse skeletal muscle tissue slide using 18712-1-AP (CKM-Specific antibody) at dilution of 1:200 (under 10x lens). Heat mediated antigen retrieval with Tris-EDTA buffer (pH 9.0).