

Nur für Forschungszwecke

GABARAPL1 Polyklonaler Antikörper



Katalog-Nr.:18721-1-AP

3 Publikationen

Allgemeine Informationen

Katalog-Nr.: 18721-1-AP	GenBank-Zugangsnummer: NM_031412	Reinigungsmethode: Antigen-Affinitätsreinigung
Größe: 150ul, Konzentration: 500 µg/ml von Nanodrop und 247 µg/ml durch die Bradford-Methode mit BSA als Standard;	GeneID (NCBI): 23710	Empfohlene Verdünnungen: WB 1:2000-1:10000 IHC 1:20-1:200
Wirt: Kaninchen	Vollständiger Name: GABA(A) receptor-associated protein like 1	
Isotyp: IgG	Berechnete Masse: 14 kDa	
	Beobachtete Masse: 17 kDa	

Anwendungen

Geprüfte Anwendungen:

FC, IHC, WB, ELISA

In Publikationen genannte Anwendungen:

WB

Getestete Reaktivität:

Human, Maus, Ratte

Zitierte Arten:

Human

Hinweis-IHC: Antigendemaskierung mit TE-Puffer pH 9,0 empfohlen. (*) Wahlweise kann die Antigendemaskierung auch mit Citratpuffer pH 6,0 erfolgen.

Positivkontrollen:

WB: Maushirngewebe, humanes Herzgewebe, humanes Milzgewebe, Mauslebergewebe, Mausnierengewebe, Rattenhirngewebe

IHC: humanes Nierengewebe, Maushirngewebe

Hintergrundinformationen

GABARAPL1 (GABARAP-like protein 1), also named as ATG8, GEC1, APG8L, ATG8L and APG8-LIKE, is a member of GABARP (GABAA receptor-associated protein) family. GABARAPL1 was initially identified as estrogen-regulated gene and the protein acts in receptor and vesicle transport. It's also involved in the process of autophagy like GABARAP and GABARAPL2, and may be considered as an autophagic marker. It is expressed at very high levels in the brain, heart, peripheral blood leukocytes, liver, kidney, placenta and skeletal muscle. And at very low levels in thymus and small intestine. The antibody is specific to GABARAPL1, and it doesn't recognize the recombinant GABARAP and GABARAPL2.

Bemerkenswerte Veröffentlichungen

Verfasser	Pubmed ID	Journal	Anwendung
Pengfei Xu	36435763	BMC Musculoskelet Disord	WB
Alexandra Boeske	28729737	Sci Rep	WB
Le Grand Jaclyn Nicole JN	21862879	Autophagy	WB

Lagerung

Lagerungsbedingungen:

Bei -20°C lagern. Nach dem Versand ein Jahr lang stabil

Lagerungspuffer:

PBS mit 0.02% Natriumazid und 50% Glycerin pH 7.3.

Aliquotieren ist nicht notwendig bei -20°C Lagerung

*** 20ul-Größen enthalten 0.1% BSA

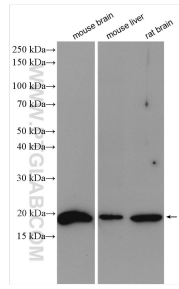
For technical support and original validation data for this product please contact:

T: 1 (888) 4PTGLAB (1-888-478-4522) (toll free in USA), or 1(312) 455-8498 (outside USA)

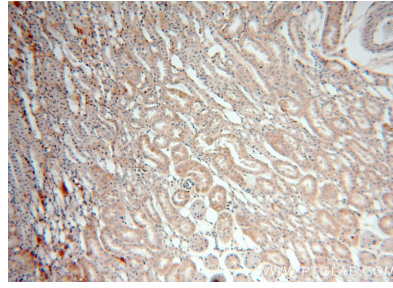
E: proteintech@ptglab.com
W: ptglab.com

This product is exclusively available under Proteintech Group brand and is not available to purchase from any other manufacturer.

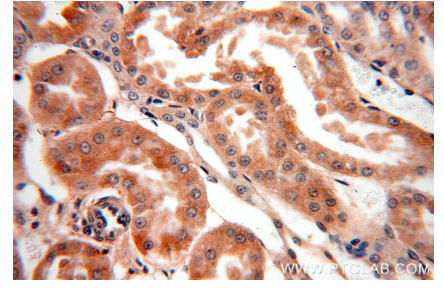
Ausgewählte Validierungsdaten



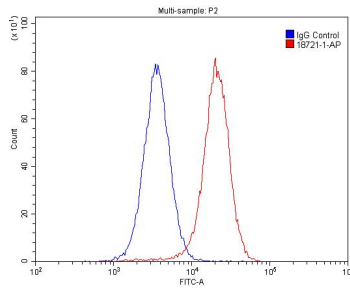
Various lysates were subjected to SDS PAGE followed by western blot with 18721-1-AP (GABARAPL1 antibody) at dilution of 1:5000 incubated at room temperature for 1.5 hours.



Immunohistochemical analysis of paraffin-embedded human kidney using 18721-1-AP (GABARAPL1 antibody) at dilution of 1:100 (under 10x lens).



Immunohistochemical analysis of paraffin-embedded human kidney using 18721-1-AP (GABARAPL1 antibody) at dilution of 1:100 (under 40x lens).



1X10⁶ HepG2 cells were stained with 0.2ug GABARAPL1 antibody (18721-1-AP, red) and control antibody (blue). Cells were fixed with 4% PFA and permeabilized with 0.1% Triton X-100. Alexa Fluor 488-conjugated AffiniPure Goat Anti-Rabbit IgG(H+L) with dilution 1:1500.