

Nur für Forschungszwecke

GABARAPL2-Specific Polyklonaler Antikörper



Katalog-Nr.:18724-1-AP

Vorgestelltes Produkt

11 Publikationen

Allgemeine Informationen

Katalog-Nr.: 18724-1-AP	GenBank-Zugangsnummer: BC005985	Reinigungsmethode: Antigen-Affinitätsreinigung
Größe: 150ul , Konzentration: 450 µg/ml von Nanodrop und 320 µg/ml durch die Bradford-Methode mit BSA als Standard;	GeneID (NCBI): 11345	Empfohlene Verdünnungen: WB 1:500-1:1000 IHC 1:20-1:200
Wirt: Kaninchen	Vollständiger Name: GABA(A) receptor-associated protein-like 2	
Isotyp: IgG	Berechnete Masse: 14 kDa	
	Beobachtete Masse: 14 kDa	

Anwendungen

Geprüfte Anwendungen:

FC, IHC, WB, ELISA

In Publikationen genannte Anwendungen:

IHC, WB

Getestete Reaktivität:

Human, Maus, Ratte

Zitierte Arten:

Human, Maus, Ratte

Hinweis-IHC: Antigendemaskierung mit TE-Puffer pH 9,0 empfohlen. (*) Wahlweise kann die Antigendemaskierung auch mit Citratpuffer pH 6,0 erfolgen.

Positivkontrollen:

WB : COLO 320-Zellen, humanes Hirngewebe, Maushirngewebe, Mausmilzgewebe, PC-3-Zellen

IHC : humanes Herzgewebe, humanes Hirngewebe

Hintergrundinformationen

GABARAPL2 (also known as Golgi-associated ATPase enhancer of 16 kDa; GATE-16) was originally characterized as a factor essential for intra-Golgi protein transport. Later GABARAPL2 along with LC3 and GABARAP, were identified as the homologs of yeast ATG8 which is a unique ubiquitin-like protein essential for autophagy. When induced GABARAPL2 is first digested by ATG4 family enzymes to become its mature form: GABARAPL2-I, later conjugated to PE lipid as lipidated form: GABARAPL2-II. The lipidated form migrates faster than its mature form on SDS-PAGE gel. GABARAPL2 is strongly expressed in the brain. This antibody is specific to GABARAPL2. It has no cross-reaction to other GABARAP protein.

Bemerkenswerte Veröffentlichungen

Verfasser	Pubmed ID	Journal	Anwendung
Naoya Sakaguchi	33042141	Front Immunol	WB
Clémence Taisne	30872707	Sci Rep	
Hye Young Ryu	33654220	Exp Mol Med	WB

Lagerung

Lagerungsbedingungen:

Bei -20°C lagern. Nach dem Versand ein Jahr lang stabil

Lagerungspuffer:

PBS mit 0.02% Natriumazid und 50% Glycerin pH 7.3.

Aliquotieren ist nicht notwendig bei -20°C Lagerung

*** 20ul-Größen enthalten 0.1% BSA

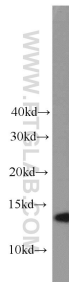
For technical support and original validation data for this product please contact:

T: 1 (888) 4PTGLAB (1-888-478-4522) (toll free in USA), or 1(312) 455-8498 (outside USA)

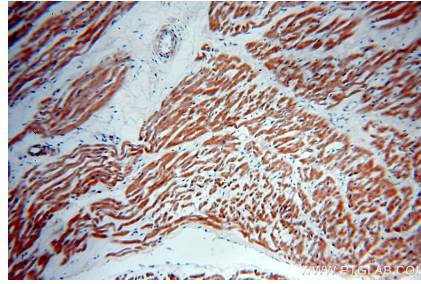
E: proteintech@ptglab.com
W: ptglab.com

This product is exclusively available under Proteintech Group brand and is not available to purchase from any other manufacturer.

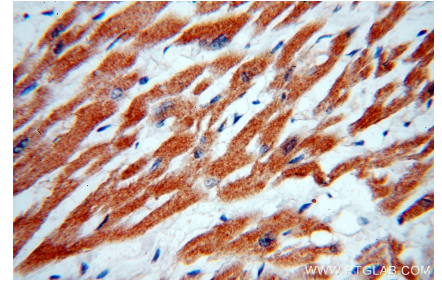
Ausgewählte Validierungsdaten



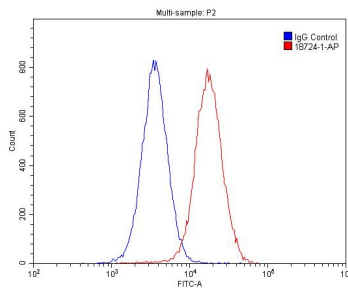
COLO 320 cells were subjected to SDS PAGE followed by western blot with 18724-1-AP (GABARAPL2-Specific antibody) at dilution of 1:800 incubated at room temperature for 1.5 hours.



Immunohistochemical analysis of paraffin-embedded human heart using 18724-1-AP (GABARAPL2-Specific antibody) at dilution of 1:50 (under 10x lens).



Immunohistochemical analysis of paraffin-embedded human heart using 18724-1-AP (GABARAPL2-Specific antibody) at dilution of 1:50 (under 40x lens).



1×10^6 HepG2 cells were stained with 0.2ug GABARAPL2-Specific antibody (18724-1-AP, red) and control antibody (blue). Cells were fixed with 4% PFA and permeabilized with 0.1% Triton X-100. Alexa Fluor 488-conjugated AffiniPure Goat Anti-Rabbit IgG(H+L) with dilution 1:1500.