

Nur für Forschungszwecke

MEPE Polyklonaler Antikörper

Katalog-Nr.:18804-1-AP

Vorgestelltes Produkt



Allgemeine Informationen

Katalog-Nr.:
18804-1-AP

Größe:
150ul , Konzentration: 700 µg/ml von
Nanodrop und 307 µg/ml durch die
Bradford-Methode mit BSA als
Standard;

Wirt:
Kaninchen

Isotyp:
IgG

GenBank-Zugangsnummer:
BC128158

GeneID (NCBI):
56955

Vollständiger Name:
matrix extracellular
phosphoglycoprotein

Berechnete Masse:
525 aa, 58 kDa

Beobachtete Masse:
43 kDa, 98 kDa

Reinigungsmethode:
Antigen-Affinitätsreinigung

Empfohlene Verdünnungen:
WB 1:1000-1:4000

Anwendungen

Geprüfte Anwendungen:
WB,ELISA

Getestete Reaktivität:
Human

Positivkontrollen:

WB : HepG2-Zellen, A2780-Zellen, A375-Zellen, HeLa-Zellen, MCF-7-Zellen

Hintergrundinformationen

Matrix extracellular phosphoglycoprotein (MEPE), also known as osteoblast/osteocyte factor 45 (OF45), is a member of the small integrin-binding ligand N-linked glycoprotein (SIBLING) family (PMID: 12952171). MEPE promotes renal phosphate excretion and modulates mineralization (PMID: 22582013). It can be phosphorylated by secreted protein kinases (PMID: 14962809). MEPE is expressed in osteoblasts, osteocytes and odontoblasts, and the expression has also been reported in numerous human tumor cell lines (PMID: 14962809; 20145617). It is a 525-amino acid protein with a calculated molecular weight of 58 kDa. This antibody raised against a synthetic peptide (CTHGRKYHYVPHRQNNSTR) detects a major band (43 kDa) and two minor bands (98 kDa and 34 kDa).

Lagerung

Lagerungsbedingungen:

Bei -20°C lagern. Nach dem Versand ein Jahr lang stabil

Lagerungspuffer:

PBS mit 0.02% Natriumazid und 50% Glycerin pH 7.3.

Aliquotieren ist nicht notwendig bei -20°C Lagerung

***** 20ul-Größen enthalten 0.1% BSA**

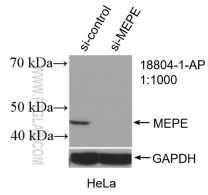
For technical support and original validation data for this product please contact:

T: 1 (888) 4PTGLAB (1-888-478-4522) (toll free
in USA), or 1(312) 455-8498 (outside USA)

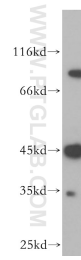
E: proteintech@ptglab.com
W: ptglab.com

This product is exclusively available under Proteintech Group brand and is not available to purchase from any other manufacturer.

Ausgewählte Validierungsdaten



WB result of MEPE antibody (18804-1-AP; 1:1000; incubated at room temperature for 1.5 hours) with sh-Control and sh-MEPE transfected HeLa cells.



HepG2 cells were subjected to SDS PAGE followed by western blot with 18804-1-AP (MEPE antibody) at dilution of 1:600 incubated at room temperature for 1.5 hours.