

Nur für Forschungszwecke

# SORCS1 Polyklonaler Antikörper

Katalog-Nr.:18839-1-AP



## Allgemeine Informationen

**Katalog-Nr.:**  
18839-1-AP

**Größe:**  
150ul , Konzentration: 500 µg/ml von  
Nanodrop und 233 µg/ml durch die  
Bradford-Methode mit BSA als  
Standard;

**Wirt:**  
Kaninchen

**Isotyp:**  
IgG

**GenBank-Zugangsnummer:**  
BC131597

**GeneID (NCBI):**  
114815

**Vollständiger Name:**  
sortilin-related VPS10 domain  
containing receptor 1

**Berechnete Masse:**  
1168 aa, 130 kDa

**Beobachtete Masse:**  
130 kDa, 60-80 kDa

**Reinigungsmethode:**

Antigen-Affinitätsreinigung

**Empfohlene Verdünnungen:**

WB 1:500-1:1000

## Anwendungen

**Geprüfte Anwendungen:**

FC, WB,ELISA

**Getestete Reaktivität:**

Human, Maus

**Positivkontrollen:**

WB : Y79-Zellen, HEK-293-Zellen, Maushirngewebe

## Hintergrundinformationen

SorCS1 is a 130 kDa type I transmembrane protein, belonging to Vps10p-domain (Vps10p-D) receptor family that comprises an N-terminal Vps10p-D, a leucine-rich domain, a single transmembrane domain, and a short cytoplasmic domain. SorCS1 is synthesized as a proprotein, which is converted to the mature receptor in late Golgi compartments by cleavage of the N-terminal propeptide. Alternative splicing of human SorCS1 results in four isoforms with different cytoplasmic domains and differential expression in tissues. This antibody was generated against the C-terminal region of human SorCS1 and recognizes various forms of SorCS1. Multiple bands around 100-130 kDa as well as 60-80 kDa have been detected in Y79 cells by western blot assay.

## Lagerung

**Lagerungsbedingungen:**

Bei -20°C lagern. Nach dem Versand ein Jahr lang stabil

**Lagerungspuffer:**

PBS mit 0.02% Natriumazid und 50% Glycerin pH 7.3.

Aliquotieren ist nicht notwendig bei -20°C Lagerung

**\*\*\* 20ul-Größen enthalten 0.1% BSA**

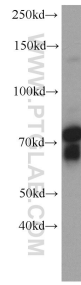
For technical support and original validation data for this product please contact:

T: 1 (888) 4PTGLAB (1-888-478-4522) (toll free  
in USA), or 1(312) 455-8498 (outside USA)

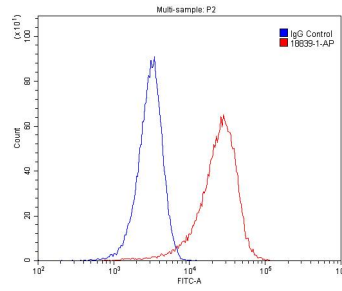
E: [proteintech@ptglab.com](mailto:proteintech@ptglab.com)  
W: [ptglab.com](http://ptglab.com)

**This product is exclusively available under Proteintech Group brand and is not available to purchase from any other manufacturer.**

## Ausgewählte Validierungsdaten



Y79 cells were subjected to SDS PAGE followed by western blot with 18839-1-AP (SORCS1 antibody) at dilution of 1:500 incubated at room temperature for 1.5 hours.



$1 \times 10^6$  HeLa cells were stained with 0.2  $\mu$ g SORCS1 antibody (18839-1-AP, red) and control antibody (blue). Alexa Fluor 488-conjugated AffiniPure Goat Anti-Rabbit IgG(H+L) with dilution 1:1500. Cells were fixed with 4% PFA and permeabilized with 0.1% Triton X-100.