

Nur für Forschungszwecke

KIR2DL3 Polyklonaler Antikörper

Katalog-Nr.:18966-1-AP



Allgemeine Informationen

Katalog-Nr.: 18966-1-AP	GenBank-Zugangsnummer: BC032422	Reinigungsmethode: Antigen-Affinitätsreinigung
Größe: 150ul , Konzentration: 400 µg/ml von Nanodrop und 200 µg/ml durch die Bradford-Methode mit BSA als Standard;	GeneID (NCBI): 3804	Empfohlene Verdünnungen: WB 1:500-1:1000
Wirt: Kaninchen	Vollständiger Name: killer cell immunoglobulin-like receptor, two domains, long cytoplasmic tail, 3	
Isotyp: IgG	Berechnete Masse: 341 aa, 38 kDa	
Immunogen Katalognummer: AG5163	Beobachtete Masse: 58 kDa	

Anwendungen

Geprüfte Anwendungen: WB,ELISA	Positivkontrollen: WB : humanes Lebergewebe,
Getestete Reaktivität: Human	

Hintergrundinformationen

Killer cell immunoglobulin-like receptors (KIRs) are a diverse family of inhibitory and activating receptors expressed on NK cells and a subset of T cells (PMID: 11861603). These polymorphic receptors interact with specific motifs on HLA class I molecules, modulate NK cytolytic activity and are encoded by genes located on chromosome 19q13.4 (PMID: 17069649). KIR2DL3, also known as CD158B2 or NKAT2, is an inhibitory receptor that is specific for HLA-C alleles (HLA-Cw1, HLA-Cw3 and HLA-Cw7) (PMID: 10196125). It is a 341-amino acid transmembrane glycoprotein consisting of an extracellular region containing two C2-type Ig-like domains, a 19-amino acid hydrophobic transmembrane region, and a long cytoplasmic tail with two immunoreceptor tyrosine-based inhibitory motifs (ITIMs). KIR2DL3 inhibits the cytolytic activity of NK cells thus preventing cell lysis (PMID: 7724594).

Lagerung

Lagerungsbedingungen:
Bei -20°C lagern. Nach dem Versand ein Jahr lang stabil
Lagerungspuffer:
PBS mit 0.02% Natriumazid und 50% Glycerin pH 7.3.
Aliquotieren ist nicht notwendig bei -20°C Lagerung

***** 20ul-Größen enthalten 0.1% BSA**

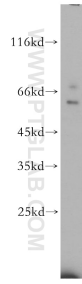
For technical support and original validation data for this product please contact:

T: 1 (888) 4PTGLAB (1-888-478-4522) (toll free
in USA), or 1(312) 455-8498 (outside USA)

E: proteintech@ptglab.com
W: ptglab.com

This product is exclusively available under Proteintech Group brand and is not available to purchase from any other manufacturer.

Ausgewählte Validierungsdaten



human liver tissue were subjected to SDS PAGE followed by western blot with 18966-1-AP (KIR2DL3 antibody) at dilution of 1:500 incubated at room temperature for 1.5 hours.