

Nur für Forschungszwecke

TGF Beta 1 Polyklonaler Antikörper

Katalog-Nr.:18978-1-AP

73 Publikationen



Allgemeine Informationen

Katalog-Nr.: 18978-1-AP	GenBank-Zugangsnummer: NM_000660	Reinigungsmethode: Antigen-Affinitätsreinigung
Größe: 150ul , Konzentration: 220 µg/ml durch die Bradford-Methode mit BSA als Standard;	GeneID (NCBI): 7040	Empfohlene Verdünnungen: WB 1:200-1:1000 IHC 1:50-1:500
Wirt: Kaninchen	Vollständiger Name: transforming growth factor, beta 1	
Isotyp: IgG	Berechnete Masse: 44 kDa	
	Beobachtete Masse: 25 kDa	

Anwendungen

Geprüfte Anwendungen: IHC, WB, ELISA	Positivkontrollen: WB : MCF-7-Zellen, IHC : humanes Lungenkarzinomgewebe,
In Publikationen genannte Anwendungen: Cell treatment, IF, IHC, WB	
Getestete Reaktivität: Human, Maus, Ratte	
Zitierte Arten: Hausschwein, Human, Hund, Maus, Ratte	
Hinweis-IHC: Antigendemaskierung mit TE-Puffer pH 9,0 empfohlen. (*) Wahlweise kann die Antigendemaskierung auch mit Citratpuffer pH 6,0 erfolgen.	

Hintergrundinformationen

TGFB, also named as LAP and TGFB1, is a multifunctional peptide that controls proliferation, differentiation, and other functions in many cell types. TGFB acts synergistically with TGFA in inducing transformation. It also acts as a negative autocrine growth factor. Dysregulation of TGFB activation and signaling may result in apoptosis. Many cells synthesize TGFB and almost all of them have specific receptors for it. TGFB positively and negatively regulates many other growth factors. It plays an important role in bone remodeling as it is a potent stimulator of osteoblastic bone formation, causing chemotaxis, proliferation and differentiation in committed osteoblasts. It is highly expressed in bone. Mutation of TGFB are the cause of Camurati-Engelmann disease (CED) which known as progressive diaphyseal dysplasia 1 (DPD1). Full length, inactive 44 kD TGFB1 is cleaved into mature TGFB1 (13 kD). TGFB1 also homodimerizes and heterodimerizes with TGFB2, so there is potential for multiple different band sizes in WB (12, 25, 45 to 65 kDa).

Bemerkenswerte Veröffentlichungen

Verfasser	Pubmed ID	Journal	Anwendung
Fang Dou	30215298	Rejuvenation Res	WB
Xin Liang	28850927	Biomed Pharmacother	WB
Haoyu Ruan	27581744	Sci Rep	IHC

Lagerung

Lagerungsbedingungen:
Bei -20°C lagern. Nach dem Versand ein Jahr lang stabil

Lagerungspuffer:
PBS mit 0.02% Natriumazid und 50% Glycerin pH 7.3.

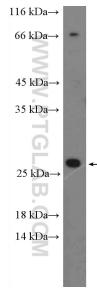
Aliquotieren ist nicht notwendig bei -20°C Lagerung

*** 20ul-Größen enthalten 0.1% BSA

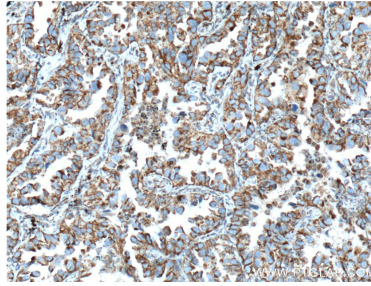
For technical support and original validation data for this product please contact:
T: 1 (888) 4PTGLAB (1-888-478-4522) (toll free in USA), or 1(312) 455-8498 (outside USA)
E: proteintech@ptglab.com
W: ptglab.com

This product is exclusively available under Proteintech Group brand and is not available to purchase from any other manufacturer.

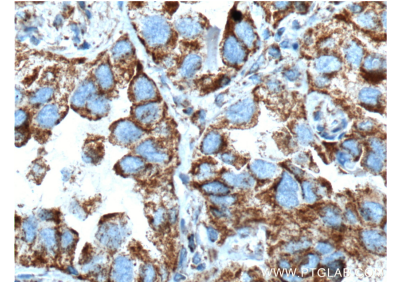
Ausgewählte Validierungsdaten



MCF-7 cells were subjected to SDS PAGE followed by western blot with 18978-1-AP (TGF-beta 1 antibody at dilution of 1:300 incubated at room temperature for 1.5 hours.



Immunohistochemical analysis of paraffin-embedded human lung cancer tissue slide using 18978-1-AP (TGF-beta 1 antibody at dilution of 1:200 (under 10x lens). Heat mediated antigen retrieval with Tris-EDTA buffer (pH 9.0).



Immunohistochemical analysis of paraffin-embedded human lung cancer tissue slide using 18978-1-AP (TGF-beta 1 antibody at dilution of 1:200 (under 40x lens). Heat mediated antigen retrieval with Tris-EDTA buffer (pH 9.0).