

Nur für Forschungszwecke

# EGFR-Specific Polyklonaler Antikörper



Katalog-Nr.:18986-1-AP

Vorgestelltes Produkt

128 Publikationen

## Allgemeine Informationen

Katalog-Nr.:  
18986-1-AP

Größe:

150ul, Konzentration: 1000 µg/ml von1956

Nanodrop;

Wirt:

Kaninchen

Isotyp:

IgG

GenBank-Zugangsnummer:

NM\_005228

GeneID (NCBI):

1956

Vollständiger Name:

epidermal growth factor receptor  
(erythroblastic leukemia viral (v-erb-  
b) oncogene homolog, avian)

Berechnete Masse:

134 kDa

Beobachtete Masse:

145-165 kDa

Reinigungsmethode:

Antigen-Affinitätsreinigung

Empfohlene Verdünnungen:

WB 1:1000-1:6000

IP 0.5-4.0 µg für IP und 1:500-1:1000

für WB

IF 1:750-1:3000

## Anwendungen

Geprüfte Anwendungen:

FC, IF, IP, WB, ELISA

In Publikationen genannte Anwendungen:

ChIP, ColP, FC, IF, IHC, IP, WB

Getestete Reaktivität:

Human

Zitierte Arten:

Hausschwein, Human, Maus, Ratte

Positivkontrollen:

WB : HepG2-Zellen, A431-Zellen, HeLa/RPE1-Zellen,  
HeLa-Zellen, L02-Zellen, MCF-7-Zellen, Multizellen,  
NCI-H1299-Zellen, NCL-H1299-Zellen

IP : MCF-7-Zellen,

IF : A431-Zellen,

## Hintergrundinformationen

ERBB1, also named as EGFR, is a receptor for EGF, but also for other members of the EGF family, as TGF-alpha, amphiregulin, betacellulin, heparin-binding EGF-like growth factor, GP30 and vaccinia virus growth factor. ERBB1 is involved in the control of cell growth and differentiation. Phosphorylates MUC1 in breast cancer cells and increases the interaction of MUC1 with C-SRC and CTNNB1/beta-catenin. Isoform 2/truncated isoform of ERBB1 may act as an antagonist. EGFR is associated with lung cancer. The antibody is specific to isoform1.

## Bemerkenswerte Veröffentlichungen

Verfasser	Pubmed ID	Journal	Anwendung
Haile Zhao	34658851	Front Pharmacol	WB,IP
Taiwei Wang	36169181	Oncol Rep	WB
Jing Cai	31826234	Carcinogenesis	WB,IHC,IF

## Lagerung

Lagerungsbedingungen:

Bei -20°C lagern. Nach dem Versand ein Jahr lang stabil

Lagerungspuffer:

PBS mit 0.02% Natriumazid und 50% Glycerin pH 7.3.

Aliquotieren ist nicht notwendig bei -20°C Lagerung

\*\*\* 20ul-Größen enthalten 0.1% BSA

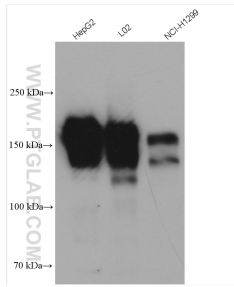
For technical support and original validation data for this product please contact:

T: 1 (888) 4PTGLAB (1-888-478-4522) (toll free  
in USA), or 1(312) 455-8498 (outside USA)

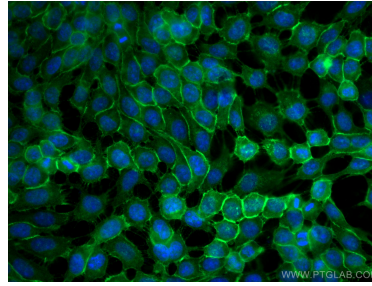
E: proteintech@ptglab.com  
W: ptglab.com

This product is exclusively available under Proteintech Group brand and is not available to purchase from any other manufacturer.

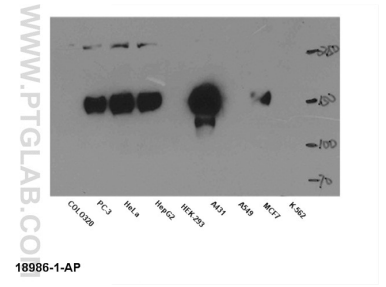
## Ausgewählte Validierungsdaten



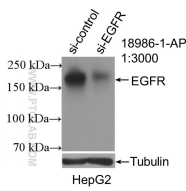
Various lysates were subjected to SDS PAGE followed by western blot with 18986-1-AP (EGFR-Specific antibody) at dilution of 1:3000 incubated at room temperature for 1.5 hours.



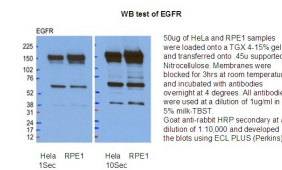
Immunofluorescent analysis of (-20°C Methanol) fixed A431 cells using EGFR-Specific antibody (18986-1-AP) at dilution of 1:1500 and CoraLite@488-Conjugated AffiniPure Goat Anti-Rabbit IgG(H+L).



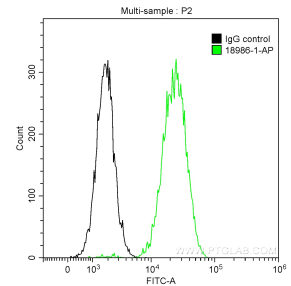
WB result of anti-EGFR (18986-1-AP) in different cell lysates.



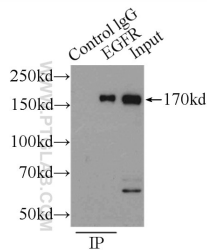
WB result of EGFR-Specific antibody (18986-1-AP; 1:3000; incubated at room temperature for 1.5 hours) with sh-Control and sh-EGFR-Specific transfected HepG2 cells.



WB result of anti-EGFR (18986-1-AP) in HeLa and RPE1 cell by Dr.Kodani, Andrew.



$1 \times 10^6$  A431 cells were stained with 0.2 ug Anti-Human EGFR-Specific (18986-1-AP) and CoraLite@488-Conjugated AffiniPure Goat Anti-Rabbit IgG(H+L) at dilution 1:1000 (green), and 0.2 ug Control Antibody. Cells were fixed with 90% MeOH.



IP Result of anti-EGFR-Specific (IP:18986-1-AP, 3ug; Detection:18986-1-AP 1:500) with MCF-7 cells lysate 2500ug.