

Nur für Forschungszwecke

SLC24A4 Polyklonaler Antikörper

Katalog-Nr.:18992-1-AP

Vorgestelltes Produkt

4 Publikationen



Allgemeine Informationen

Katalog-Nr.:
18992-1-AP

Größe:
150ul, Konzentration: 300 µg/ml von
Nanodrop und 247 µg/ml durch die
Bradford-Methode mit BSA als
Standard;

Wirt:
Kaninchen

Isotyp:
IgG

GenBank-Zugangsnummer:
NM_153646

GeneID (NCBI):
123041
Vollständiger Name:
solute carrier family 24
(sodium/potassium/calcium
exchanger), member 4

Berechnete Masse:

69 kDa

Beobachtete Masse:

62-90 kDa

Reinigungsmethode:

Antigen-Affinitätsreinigung

Empfohlene Verdünnungen:

WB 1:2000-1:16000

IHC 1:50-1:500

IF 1:50-1:500

Anwendungen

Geprüfte Anwendungen:

IF, IHC, WB, ELISA

In Publikationen genannte Anwendungen:

IHC, WB

Getestete Reaktivität:

Human, Maus

Zitierte Arten:

Maus, Ratte

**Hinweis-IHC: Antigenmaskierung mit TE-
Puffer pH 9,0 empfohlen. (*) Wahlweise
kann die Antigenmaskierung auch mit
Citratpuffer pH 6,0 erfolgen.**

Positivkontrollen:

WB : Maushirngewebe, HeLa-Zellen, Mausherzgewebe

IHC : Maushirngewebe, humanes Herzgewebe

IF : Maus-Augengewebe,

Hintergrundinformationen

SLC24A4, also named as NCKX4, belongs to the sodium/potassium/calcium exchanger family. SLC24A4 transports 1 Ca²⁺ and 1 K⁺ in exchange for 4 Na⁺. Genetic variations in SLC24A4 are associated with skin/hair/eye pigmentation type 6 (SHEP6).

Bemerkenswerte Veröffentlichungen

Verfasser	Pubmed ID	Journal	Anwendung
Akane Inoue	34592494	Bone	IHC
A L J J Bronckers	27752731	Calcif Tissue Int	WB
Lacruz Rodrigo S RS	21809343	J Cell Physiol	WB

Lagerung

Lagerungsbedingungen:

Bei -20°C lagern. Nach dem Versand ein Jahr lang stabil

Lagerungspuffer:

PBS mit 0.02% Natriumazid und 50% Glycerin pH 7.3.

Aliquotieren ist nicht notwendig bei -20°C Lagerung

*** 20ul-Größen enthalten 0.1% BSA

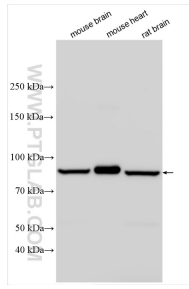
For technical support and original validation data for this product please contact:

T: 1 (888) 4PTGLAB (1-888-478-4522) (toll free
in USA), or 1(312) 455-8498 (outside USA)

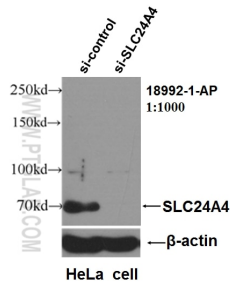
E: proteintech@ptglab.com
W: ptglab.com

This product is exclusively available under Proteintech Group brand and is not available to purchase from any other manufacturer.

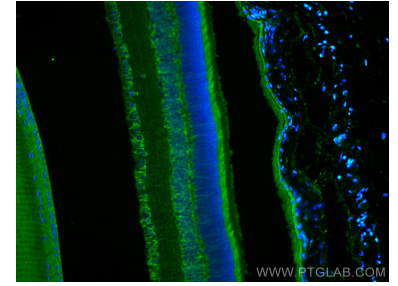
Ausgewählte Validierungsdaten



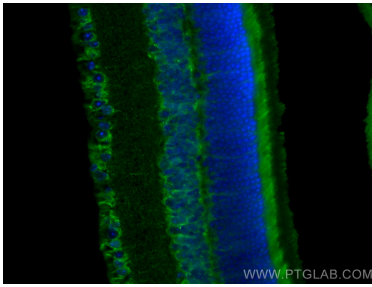
Various lysates were subjected to SDS PAGE followed by western blot with 18992-1-AP (SLC24A4 antibody) at dilution of 1:8000 incubated at room temperature for 1.5 hours.



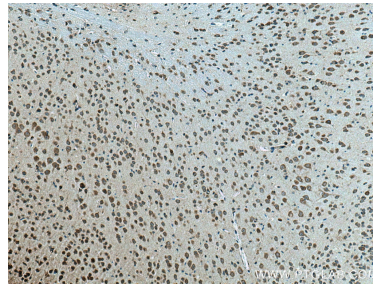
WB result of SLC24A4 antibody (18992-1-AP, 1:1000) with si-Control and si-SLC24A4 transfected HeLa cells.



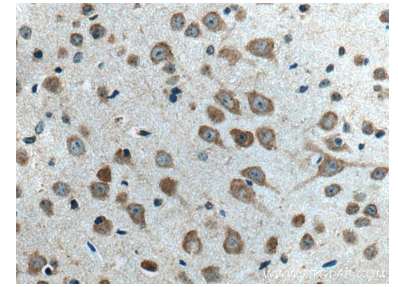
Immunofluorescent analysis of (4% PFA) fixed mouse eye tissue using SLC24A4 antibody (18992-1-AP) at dilution of 1:200 and CoraLite@488-Conjugated AffiniPure Goat Anti-Rabbit IgG(H+L).



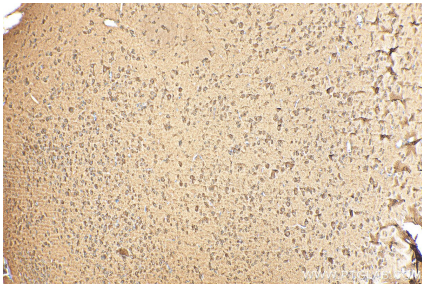
Immunofluorescent analysis of (4% PFA) fixed mouse eye tissue using SLC24A4 antibody (18992-1-AP) at dilution of 1:200 and CoraLite@488-Conjugated AffiniPure Goat Anti-Rabbit IgG(H+L).



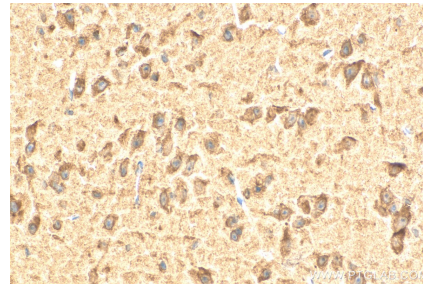
Immunohistochemical analysis of paraffin-embedded mouse brain tissue slide using 18992-1-AP (SLC24A4 antibody) at dilution of 1:200 (under 10x lens). Heat mediated antigen retrieval with Tris-EDTA buffer (pH 9.0).



Immunohistochemical analysis of paraffin-embedded mouse brain tissue slide using 18992-1-AP (SLC24A4 antibody) at dilution of 1:200 (under 40x lens). Heat mediated antigen retrieval with Tris-EDTA buffer (pH 9.0).



Immunohistochemical analysis of paraffin-embedded mouse brain tissue slide using 18992-1-AP (SLC24A4 antibody) at dilution of 1:200 (under 10x lens). Heat mediated antigen retrieval with Tris-EDTA buffer (pH 9.0).



Immunohistochemical analysis of paraffin-embedded mouse brain tissue slide using 18992-1-AP (SLC24A4 antibody) at dilution of 1:200 (under 40x lens). Heat mediated antigen retrieval with Tris-EDTA buffer (pH 9.0).