

Allgemeine Informationen

Katalog-Nr.: 19123-1-AP	GenBank-Zugangsnummer: NM_005215	Reinigungsmethode: Antigen-Affinitätsreinigung
Größe: 150ul, Konzentration: 850 µg/ml von Nanodrop und 427 µg/ml durch die Bradford-Methode mit BSA als Standard;	GeneID (NCBI): 1630	Empfohlene Verdünnungen: WB 1:500-1:1000
Wirt: Kaninchen	Vollständiger Name: deleted in colorectal carcinoma	
Isotyp: IgG	Berechnete Masse: 1447 aa, 158 kDa	
	Beobachtete Masse: 180 kDa	

Anwendungen

Geprüfte Anwendungen: WB, ELISA	Positivkontrollen: WB: Maushirngewebe,
In Publikationen genannte Anwendungen: IF, WB	
Getestete Reaktivität: Human, Maus, Ratte	
Zitierte Arten: Maus	

Hintergrundinformationen

DCC, also named as IGDC1, belongs to the immunoglobulin superfamily and DCC family. DCC is a receptor for netrin required for axon guidance. DCC mediates axon attraction of neuronal growth cones in the developing nervous system upon ligand binding. Its association with UNC5 proteins may trigger signaling for axon repulsion. DCC also acts as a dependence receptor required for apoptosis induction when not associated with netrin ligand. DCC gene is a tumor suppressor gene. This antibody raised against a synthesized polypeptide of human DCC protein recognizes endogenous DCC with an apparent molecular weight of 180 kDa. As the predicted molecular mass of DCC is 158 kDa, the slower mobility is likely attributable to post-translational modification, perhaps by glycosylation at potential N-linked glycosylation sites (PMID: 7926722; 8044801).

Bemerkenswerte Veröffentlichungen

Verfasser	Pubmed ID	Journal	Anwendung
Mian Xiao	34344989	Sci Rep	IF
Dongdong Chai	32271715	Aging (Albany NY)	WB

Lagerung

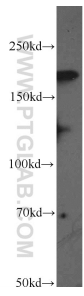
Lagerungsbedingungen:
Bei -20°C lagern. Nach dem Versand ein Jahr lang stabil
Lagerungspuffer:
PBS mit 0.02% Natriumazid und 50% Glycerin pH 7.3.
 Aliquotieren ist nicht notwendig bei -20°C Lagerung

*** 20ul-Größen enthalten 0.1% BSA

For technical support and original validation data for this product please contact:
 T: 1 (888) 4PTGLAB (1-888-478-4522) (toll free in USA), or 1(312) 455-8498 (outside USA)
 E: proteintech@ptglab.com
 W: ptglab.com

This product is exclusively available under Proteintech Group brand and is not available to purchase from any other manufacturer.

Ausgewählte Validierungsdaten



mouse brain tissue were subjected to SDS PAGE followed by western blot with 19123-1-AP (DCC-Specific Antibody) at dilution of 1:600 incubated at room temperature for 1.5 hours.