

Nur für Forschungszwecke

Calcium Sensing Receptor Polyklonaler Antikörper



Katalog-Nr.: 19125-1-AP

Vorgestelltes Produkt

16 Publikationen

Allgemeine Informationen

Katalog-Nr.:
19125-1-AP

Größe:
150ul, Konzentration: 700 µg/ml von
Nanodrop;

Wirt:
Kaninchen

Isotyp:
IgG

GenBank-Zugangsnummer:
NM_000388

GeneID (NCBI):
846

Vollständiger Name:
calcium-sensing receptor

Berechnete Masse:
121 kDa

Beobachtete Masse:
120-140 kDa

Reinigungsmethode:

Antigen-Affinitätsreinigung

Empfohlene Verdünnungen:

WB 1:2000-1:10000
IF 1:10-1:100

Anwendungen

Geprüfte Anwendungen:

IF, WB, ELISA

In Publikationen genannte Anwendungen:

IF, IHC, WB

Getestete Reaktivität:

Human, Maus, Ratte

Zitierte Arten:

Human, Maus, Ratte, Ziege

Positivkontrollen:

WB : Mausnierengewebe, COLO 320-Zellen, HL-60-Zellen, Jurkat-Zellen, Mausebergewebe

IF : HeLa-Zellen,

Hintergrundinformationen

CASR, also named as GPRC2A, PCAR1, belongs to the G-protein coupled receptor 3 family. Changes in extracellular calcium are thought to modulate a balance between proliferation and differentiation in a variety of cell types. The activity of CASR is mediated by a G-protein that activates a phosphatidylinositol-calcium second messenger system. It has been shown to play a major role in regulating parathyroid hormone secretion and subsequently influencing the calcium concentration of extracellular fluids. In normal primary keratinocytes and breast epithelial cells, proliferation is inhibited and elevated extracellular calcium levels trigger differentiation. Malignant transformations of these cell types are accompanied by a loss of responsiveness to the anti-proliferative effects of elevated extracellular calcium. Several disorders of calcium homeostasis have been linked to mutations in the CaSR. These include familial hypocalciuric hypercalcemia (FHH), neonatal severe hyperparathyroidism (NSHPT), and autosomal dominant hypocalcemia (ADHypo). The 60-65 kDa band detected by this antibody might represent a degradation product of CASR (PMID: 15718278).

Bemerkenswerte Veröffentlichungen

Verfasser	Pubmed ID	Journal	Anwendung
Wei Pang	36093409	Biomed Res Int	WB
Meili Lu	30364197	Front Pharmacol	WB,IF
Panpan Chen	34690749	Front Pharmacol	WB

Lagerung

Lagerungsbedingungen:

Bei -20°C lagern. Nach dem Versand ein Jahr lang stabil

Lagerungspuffer:

PBS mit 0.02% Natriumazid und 50% Glycerin pH 7.3.

Aliquotieren ist nicht notwendig bei -20°C Lagerung

*** 20ul-Größen enthalten 0.1% BSA

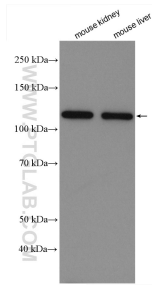
For technical support and original validation data for this product please contact:

T: 1 (888) 4PTGLAB (1-888-478-4522) (toll free
in USA), or 1(312) 455-8498 (outside USA)

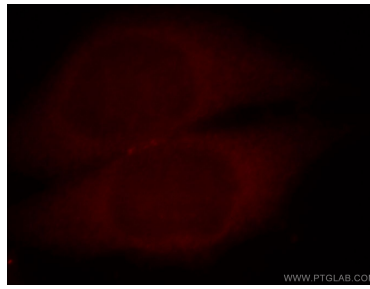
E: proteintech@ptglab.com
W: ptglab.com

This product is exclusively available under Proteintech Group brand and is not available to purchase from any other manufacturer.

Ausgewählte Validierungsdaten



Various lysates were subjected to SDS PAGE followed by western blot with 19125-1-AP (Calcium Sensing Receptor antibody) at dilution of 1:5000 incubated at room temperature for 1.5 hours.



Immunofluorescent analysis of HeLa cells, using CASR antibody 19125-1-AP at 1:25 dilution and Rhodamine-labeled goat anti-rabbit IgG (red).