

Nur für Forschungszwecke

Polycystin 2 Polyklonaler Antikörper

Katalog-Nr.: 19126-1-AP

3 Publikationen



Allgemeine Informationen

Katalog-Nr.:

19126-1-AP

Größe:

150ul, Konzentration: 400 µg/ml von Nanodrop;

Wirt:

Kaninchen

Isotyp:

IgG

GenBank-Zugangsnummer:

NM_000297

GeneID (NCBI):

5311
Vollständiger Name:
polycystic kidney disease 2
(autosomal dominant)

Berechnete Masse:

110 kDa

Beobachtete Masse:

109 kDa

Reinigungsmethode:

Antigen-Affinitätsreinigung

Empfohlene Verdünnungen:

WB 1:2000-1:16000
IP 0.5-4.0 µg für IP und 1:500-1:1000 für WB
IHC 1:20-1:200

Anwendungen

Geprüfte Anwendungen:

IHC, IP, WB, ELISA

In Publikationen genannte Anwendungen:

IHC, WB

Getestete Reaktivität:

Human, Hund, Maus, Ratte

Zitierte Arten:

Human, Maus, Ratte

Hinweis-IHC: Antigendemaskierung mit TE-Puffer pH 9,0 empfohlen. (*) Wahlweise kann die Antigendemaskierung auch mit Citratpuffer pH 6,0 erfolgen.

Positivkontrollen:

WB: Mausnierengewebe, HEK-293-Zellen, humanes Nierengewebe

IP: Maushodengewebe,

IHC: humanes Nierengewebe,

Hintergrundinformationen

Polycystin 2 (PKD2), the product of the gene mutated in type 2 autosomal dominant polycystic kidney disease, belongs to the polycystin family. PKD2 is a ~110-kDa six-transmembrane channel protein with cytoplasmic N- and C-termini. This protein functions as a Ca²⁺-activated intracellular Ca²⁺ release channel in the endoplasmic reticulum. It is also present in the plasma membrane, where it functions as a nonselective cation channel. In addition, PKD2 expression has been documented in the primary cilium of kidney epithelial cells, where it is believed to have an essential role in mediating Ca²⁺ entry in response to flow rate changes, suggesting that it may be part of a mechanosensing machinery residing in the primary cilium. (PMID: 16135816; 10497221)

Bemerkenswerte Veröffentlichungen

Verfasser	Pubmed ID	Journal	Anwendung
Xiaomei Liu	29130966	Cell Physiol Biochem	WB
Jian-Gang Ren	28552828	Hum Pathol	IHC
Xin Hou	34307458	Front Mol Biosci	WB

Lagerung

Lagerungsbedingungen:

Bei -20°C lagern. Nach dem Versand ein Jahr lang stabil

Lagerungspuffer:

PBS mit 0.02% Natriumazid und 50% Glycerin pH 7.3.

Aliquotieren ist nicht notwendig bei -20°C Lagerung

*** 20ul-Größen enthalten 0.1% BSA

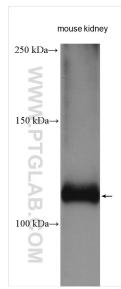
For technical support and original validation data for this product please contact:

T: 1 (888) 4PTGLAB (1-888-478-4522) (toll free in USA), or 1(312) 455-8498 (outside USA)

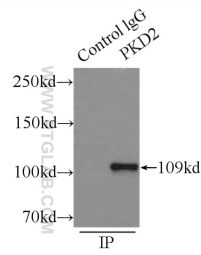
E: proteintech@ptglab.com
W: ptglab.com

This product is exclusively available under Proteintech Group brand and is not available to purchase from any other manufacturer.

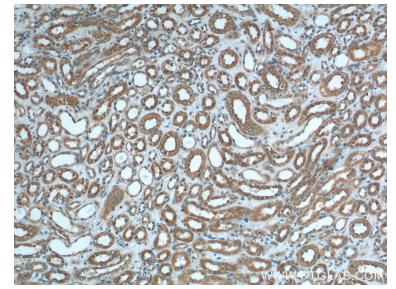
Ausgewählte Validierungsdaten



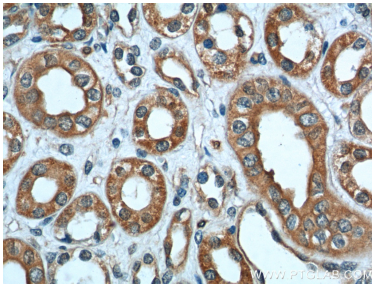
mouse kidney tissue were subjected to SDS PAGE followed by western blot with 19126-1-AP (Polycystin 2 antibody) at dilution of 1:8000 incubated at room temperature for 1.5 hours.



IP Result of anti-Polycystin 2 (IP:19126-1-AP, 3ug; Detection:19126-1-AP 1:500) with mouse testis tissue lysate 8000ug.



Immunohistochemical analysis of paraffin-embedded human kidney tissue slide using 19126-1-AP (Polycystin 2 antibody at dilution of 1:200 (under 10x lens).



Immunohistochemical analysis of paraffin-embedded human kidney tissue slide using 19126-1-AP (Polycystin 2 antibody at dilution of 1:200 (under 40x lens).