

Nur für Forschungszwecke

PARK9/ATP13A2 Polyklonaler Antikörper

Katalog-Nr.: 19141-1-AP



Allgemeine Informationen

Katalog-Nr.: 19141-1-AP	GenBank-Zugangsnummer: BC030267	Reinigungsmethode: Antigen-Affinitätsreinigung
Größe: 150ul, Konzentration: 500 µg/ml von Nanodrop;	GeneID (NCBI): 23400	Empfohlene Verdünnungen: WB 1:200-1:1000 IHC 1:50-1:500
Wirt: Kaninchen	Vollständiger Name: ATPase type 13A2	
Isotyp: IgG	Berechnete Masse: 1158 aa, 126 kDa	
Immunogen Katalognummer: AG11435	Beobachtete Masse: 125-130 kDa	

Anwendungen

Geprüfte Anwendungen: IHC, WB, ELISA	Positivkontrollen: WB : Maushirngewebe, IHC : Maushirngewebe,
Getestete Reaktivität: Maus	

Hinweis-IHC: Antigendemaskierung mit TE-Puffer pH 9,0 empfohlen. (*) Wahlweise kann die Antigendemaskierung auch mit Citratpuffer pH 6,0 erfolgen.

Hintergrundinformationen

ATP13A2 belongs to the P-type superfamily of ATPases that transport inorganic cations and other substrates across cell membranes. It appears to protect cells from manganese and zinc toxicity, possibly by causing cellular efflux and/or lysosomal sequestration; and from iron toxicity, possibly by preserving lysosome integrity against iron-induced lipid peroxidation (21724849)(24334770). However, it potentiates the toxic effects of cadmium and nickel on developing neurites, and of the widely used herbicide paraquat possibly by increasing polyamine uptake. Deficiency is associated with spastic paraplegia and Kufor-Rakeb syndrome, in which there is progressive parkinsonism with dementia.

Lagerung

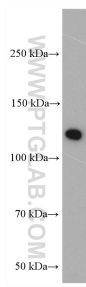
Lagerungsbedingungen:
Bei -20°C lagern. Nach dem Versand ein Jahr lang stabil
Lagerungspuffer:
PBS mit 0.02% Natriumazid und 50% Glycerin pH 7.3.
Aliquotieren ist nicht notwendig bei -20°C Lagerung

*** 20ul-Größen enthalten 0.1% BSA

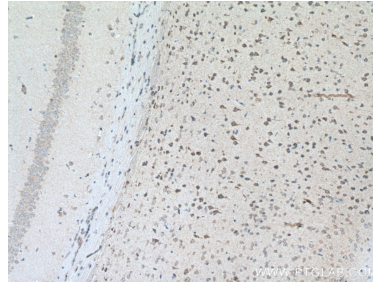
For technical support and original validation data for this product please contact:
T: 1 (888) 4PTGLAB (1-888-478-4522) (toll free in USA), or 1(312) 455-8498 (outside USA)
E: proteintech@ptglab.com
W: ptglab.com

This product is exclusively available under Proteintech Group brand and is not available to purchase from any other manufacturer.

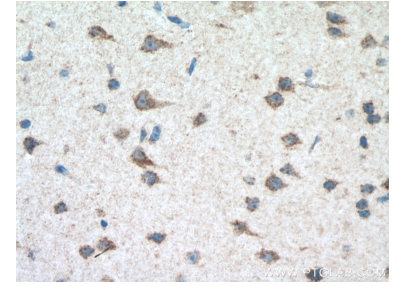
Ausgewählte Validierungsdaten



mouse brain tissue were subjected to SDS PAGE followed by western blot with 19141-1-AP (PARK9/ATP13A2 antibody) at dilution of 1:300 incubated at room temperature for 1.5 hours.



Immunohistochemical analysis of paraffin-embedded mouse brain tissue slide using 19141-1-AP (PARK9/ATP13A2 antibody) at dilution of 1:200 (under 10x Lens. Heat mediated antigen retrieval with Tris-EDTA buffer (pH 9.0).



Immunohistochemical analysis of paraffin-embedded mouse brain tissue slide using 19141-1-AP (PARK9/ATP13A2 antibody) at dilution of 1:200 (under 40x Lens. Heat mediated antigen retrieval with Tris-EDTA buffer (pH 9.0).