

Nur für Forschungszwecke

CD39/ENTPD1 Polyklonaler Antikörper



Katalog-Nr.: 19229-1-AP

5 Publikationen

Allgemeine Informationen

Katalog-Nr.:
19229-1-AP

Größe:
150ul, Konzentration: 240 µg/ml von
Nanodrop und 200 µg/ml durch die
Bradford-Methode mit BSA als
Standard;

Wirt:
Kaninchen

Isotyp:
IgG

Immunogen Katalognummer:
AG6165

GenBank-Zugangsnummer:
BC047664

GeneID (NCBI):
953

Vollständiger Name:
ectonucleoside triphosphate
diphosphohydrolase 1

Berechnete Masse:
58 kDa

Beobachtete Masse:
75-95 kDa

Reinigungsmethode:

Antigen-Affinitätsreinigung

Empfohlene Verdünnungen:

WB 1:500-1:2000
IP 0.5-4.0 µg für IP und 1:500-1:1000
für WB
IHC 1:20-1:200
IF 1:50-1:500

Anwendungen

Geprüfte Anwendungen:

FC, IF, IHC, IP, WB, ELISA

In Publikationen genannte Anwendungen:

FC, IHC, WB

Getestete Reaktivität:

Human, Maus, Ratte

Zitierte Arten:

Human, Maus, Ratte

Hinweis-IHC: Antigendemaskierung mit TE-Puffer pH 9,0 empfohlen. (*) Wahlweise kann die Antigendemaskierung auch mit Citratpuffer pH 6,0 erfolgen.

Positivkontrollen:

WB: Jurkat-Zellen, HL-60-Zellen, humanes
Lebergewebe, Maushirngewebe, Mauslebergewebe

IP: Mauslebergewebe,

IHC: humanes Plazenta-Gewebe, humanes
Lebergewebe, humanes Tonsillitisgewebe

IF: humanes Plazenta-Gewebe,

Hintergrundinformationen

ENTPD1(Ectonucleoside triphosphate diphosphohydrolase 1) is also named as CD39, NTPDase 1, Ecto-ATPDase 1 and belongs to the GDA1/CD39 NTPase family. In the nervous system, it can hydrolyze ATP and other nucleotides to regulate purinergic neurotransmission. It is a noncovalent tetrameric protein and that detergent inhibition of enzymatic activity is caused by dissociation of ectoapyrase tetramers into monomers (PMID: 9733785). And it is a 70- to 100-kDa protein that is heavily N-glycosylated (PMID: 7930580). It has 3 isoforms produced by alternative splicing. CD39 preferentially occurred as a dimer that could be dissociated into monomeric forms. (PMID: 12694193). The soluble isoform of CD39(38-478 amino acid) locates to the extracellular part and 19229-1-AP recognizes both the 3 isoforms and soluble form of CD39 (38-478aa) molecule.

Bemerkenswerte Veröffentlichungen

Verfasser	Pubmed ID	Journal	Anwendung
Wenjia Liu	30210899	Bone Res	WB
Yunshuo Zhao	34648290	J Chem Inf Model	FC
Hao Cui	36436019	Cancer Immunol Immunother	WB,IHC

Lagerung

Lagerungsbedingungen:

Bei -20°C lagern. Nach dem Versand ein Jahr lang stabil

Lagerungspuffer:

PBS mit 0.02% Natriumazid und 50% Glycerin pH 7.3.

Aliquotieren ist nicht notwendig bei -20°C Lagerung

*** 20ul-Größen enthalten 0.1% BSA

For technical support and original validation data for this product please contact:

T: 1 (888) 4PTGLAB (1-888-478-4522) (toll free
in USA), or 1(312) 455-8498 (outside USA)

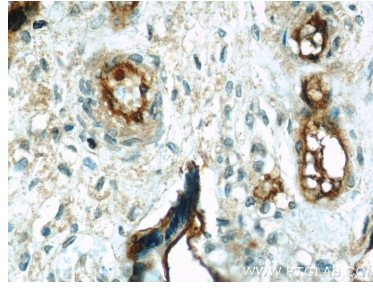
E: proteintech@ptglab.com
W: ptglab.com

This product is exclusively available under Proteintech Group brand and is not available to purchase from any other manufacturer.

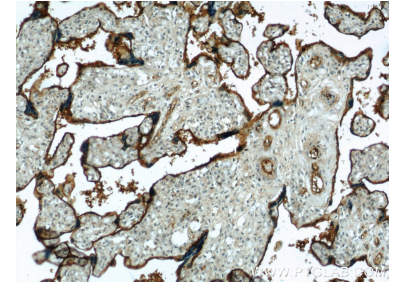
Ausgewählte Validierungsdaten



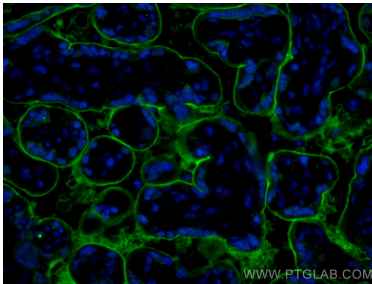
Jurkat cells were subjected to SDS PAGE followed by western blot with 19229-1-AP (CD39 antibody) at dilution of 1:500 incubated at room temperature for 1.5 hours.



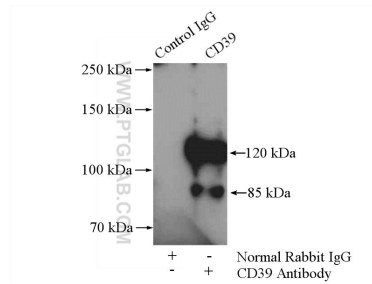
Immunohistochemical analysis of paraffin-embedded human placenta using 19229-1-AP (CD39 antibody) at dilution of 1:50 (under 40x lens).



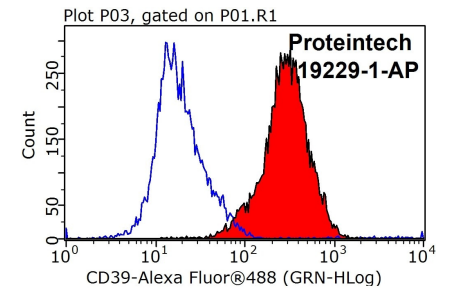
Immunohistochemical analysis of paraffin-embedded human placenta using 19229-1-AP (CD39 antibody) at dilution of 1:50 (under 10x lens).



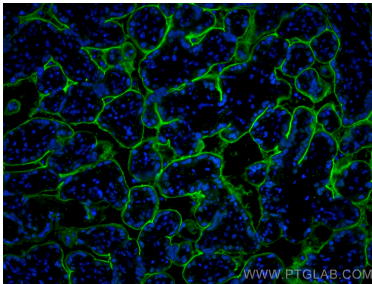
Immunofluorescent analysis of (4% PFA) fixed human placenta tissue using CD39/ENTPD1 antibody (19229-1-AP) at dilution of 1:200 and CoraLite®488-Conjugated AffiniPure Goat Anti-Rabbit IgG(H+L).



IP Result of anti-CD39 (IP:19229-1-AP, 4ug; Detection:19229-1-AP 1:800) with mouse liver tissue lysate 4000ug.



1X10⁶ Jurkat cells were stained with 0.5ug CD39 antibody (19229-1-AP, red) and control antibody (blue). Fixed with 90% MeOH blocked with 3% BSA (30 min). Alexa Fluor 488-conjugated AffiniPure Goat Anti-Rabbit IgG(H+L) with dilution 1:1000.



Immunofluorescent analysis of (4% PFA) fixed human placenta tissue using CD39/ENTPD1 antibody (19229-1-AP) at dilution of 1:200 and CoraLite®488-Conjugated AffiniPure Goat Anti-Rabbit IgG(H+L).