

Nur für Forschungszwecke

ADHFE1 Polyklonaler Antikörper

Katalog-Nr.:19359-1-AP



Allgemeine Informationen

Katalog-Nr.:
19359-1-AP

Größe:

150ul, Konzentration: 400 µg/ml von Nanodrop und 260 µg/ml durch die Bradford-Methode mit BSA als Standard;

Wirt:

Kaninchen

Isotyp:

IgG

Immunogen Katalognummer:
AG6803

GenBank-Zugangsnummer:

BC064634

GeneID (NCBI):

137872

Vollständiger Name:

alcohol dehydrogenase, iron containing, 1

Berechnete Masse:

50 kDa

Beobachtete Masse:

45 kDa

Reinigungsmethode:

Antigen-Affinitätsreinigung

Empfohlene Verdünnungen:

WB 1:1000-1:4000

IP 0.5-4.0 µg für IP und 1:200-1:1000 für WB

IHC 1:50-1:500

Anwendungen

Geprüfte Anwendungen:

IHC, IP, WB, ELISA

Getestete Reaktivität:

Human, Maus, Ratte

Hinweis-IHC: Antigendemaskierung mit TE-Puffer pH 9,0 empfohlen. (*) Wahlweise kann die Antigendemaskierung auch mit Citratpuffer pH 6,0 erfolgen.

Positivkontrollen:

WB: Mausherzgewebe, Mausnierengewebe, Rattennierengewebe

IP: Mausherzgewebe,

IHC: humanes Kolongewebe, humanes Kolonkarzinomgewebe, humanes Lebergewebe

Hintergrundinformationen

Lagerung

Lagerungsbedingungen:

Bei -20°C lagern. Nach dem Versand ein Jahr lang stabil

Lagerungspuffer:

PBS mit 0.02% Natriumazid und 50% Glycerin pH 7.3.

Aliquotieren ist nicht notwendig bei -20°C Lagerung

*** 20ul-Größen enthalten 0.1% BSA

For technical support and original validation data for this product please contact:

T: 1 (888) 4PTGLAB (1-888-478-4522) (toll free in USA), or 1(312) 455-8498 (outside USA)

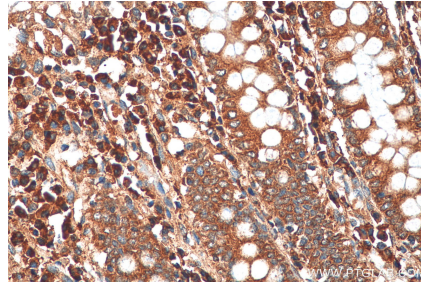
E: proteintech@ptglab.com
W: ptglab.com

This product is exclusively available under Proteintech Group brand and is not available to purchase from any other manufacturer.

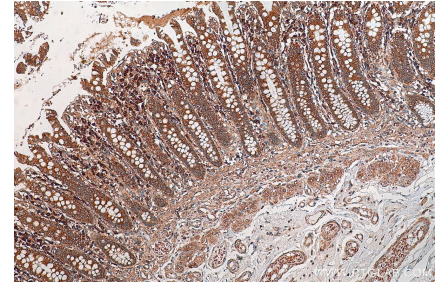
Ausgewählte Validierungsdaten



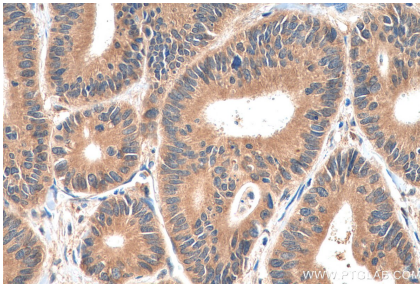
mouse heart tissue were subjected to SDS PAGE followed by western blot with 19359-1-AP (ADHFE1 antibody) at dilution of 1:1000 incubated at room temperature for 1.5 hours.



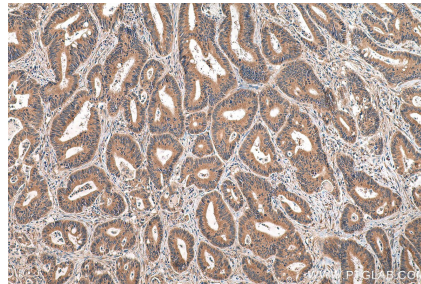
Immunohistochemical analysis of paraffin-embedded human colon tissue slide using 19359-1-AP (ADHFE1 antibody) at dilution of 1:200 (under 40x lens). Heat mediated antigen retrieval with Tris-EDTA buffer (pH 9.0).



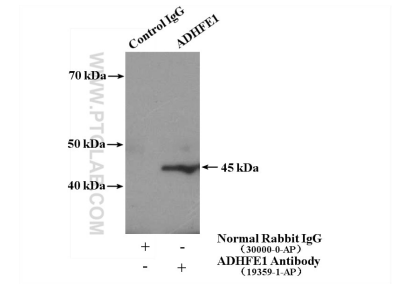
Immunohistochemical analysis of paraffin-embedded human colon tissue slide using 19359-1-AP (ADHFE1 antibody) at dilution of 1:200 (under 10x lens). Heat mediated antigen retrieval with Tris-EDTA buffer (pH 9.0).



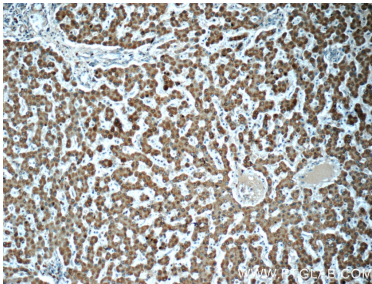
Immunohistochemical analysis of paraffin-embedded human colon cancer tissue slide using 19359-1-AP (ADHFE1 antibody) at dilution of 1:200 (under 40x lens). Heat mediated antigen retrieval with Tris-EDTA buffer (pH 9.0).



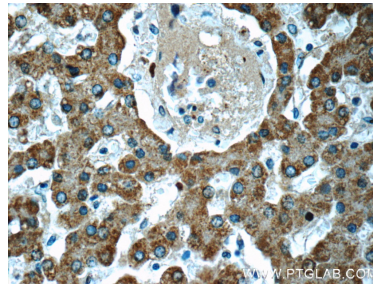
Immunohistochemical analysis of paraffin-embedded human colon cancer tissue slide using 19359-1-AP (ADHFE1 antibody) at dilution of 1:200 (under 10x lens). Heat mediated antigen retrieval with Tris-EDTA buffer (pH 9.0).



IP Result of anti-ADHFE1 (IP:19359-1-AP, 4ug; Detection:19359-1-AP 1:300) with mouse heart tissue lysate 4000ug.



Immunohistochemical analysis of paraffin-embedded human liver tissue slide using 19359-1-AP (ADHFE1 Antibody) at dilution of 1:50 (under 10x lens).



Immunohistochemical analysis of paraffin-embedded human liver tissue slide using 19359-1-AP (ADHFE1 Antibody) at dilution of 1:50 (under 40x lens).