

Nur für Forschungszwecke

# CHCHD2 Polyklonaler Antikörper

Katalog-Nr.: 19424-1-AP

Vorgestelltes Produkt

27 Publikationen



## Allgemeine Informationen

<b>Katalog-Nr.:</b> 19424-1-AP	<b>GenBank-Zugangsnummer:</b> BC003079	<b>Reinigungsmethode:</b> Antigen-Affinitätsreinigung
<b>Größe:</b> 150ul, Konzentration: 550 µg/ml von Nanodrop;	<b>GeneID (NCBI):</b> 51142	<b>Empfohlene Verdünnungen:</b> WB 1:500-1:2000 IP 0.5-4.0 µg für IP und 1:500-1:2000 für WB
<b>Wirt:</b> Kaninchen	<b>Vollständiger Name:</b> coiled-coil-helix-coiled-coil-helix domain containing 2	<b>IHC 1:50-1:500</b> <b>IF 1:200-1:800</b>
<b>Isotyp:</b> IgG	<b>Berechnete Masse:</b> 151 aa, 16 kDa	
<b>Immunogen Katalognummer:</b> AG13752	<b>Beobachtete Masse:</b> 16-18 kDa	

## Anwendungen

### Geprüfte Anwendungen:

IF, IHC, IP, WB, ELISA

### In Publikationen genannte Anwendungen:

CoIP, IF, IHC, WB

### Getestete Reaktivität:

Human, Maus

### Zitierte Arten:

Drosophila, Human, Maus

### Positivkontrollen:

**WB:** HT-1080.Zellen, HEK-293-Zellen, HepG2-Zellen, humanes Nebennierengewebe

**IP:** HepG2-Zellen,

**IHC:** humanes Lungenkarzinomgewebe, Maushirngewebe

**IF:** HepG2-Zellen,

**Hinweis-IHC: Antigenmaskierung mit TE-Puffer pH 9,0 empfohlen. (\*) Wahlweise kann die Antigenmaskierung auch mit Citratpuffer pH 6,0 erfolgen.**

## Hintergrundinformationen

CHCHD2 is a widely expressed 16.7-kDa mitochondrion-localized protein. CHCHD2 contains a C-terminal CHCH (coiled-coil helix coiled-coil helix) domain. The function of the CHCH domain is not well understood, and the few characterized proteins that harbor this domain have diverse functions. Mutations in CHCHD2 gene have been reported in autosomal dominant Parkinson's disease (ADPD).

## Bemerkenswerte Veröffentlichungen

Verfasser	Pubmed ID	Journal	Anwendung
Alec S T Smith	34660586	Front Cell Dev Biol	IHC
Maxime Feyeux	22678061	Hum Mol Genet	WB
Da-Yuan Chen	33140044	bioRxiv	WB

## Lagerung

### Lagerungsbedingungen:

Bei -20°C lagern. Nach dem Versand ein Jahr lang stabil

### Lagerungspuffer:

PBS mit 0.02% Natriumazid und 50% Glycerin pH 7.3.

Aliquotieren ist nicht notwendig bei -20°C Lagerung

\*\*\* 20ul-Größen enthalten 0.1% BSA

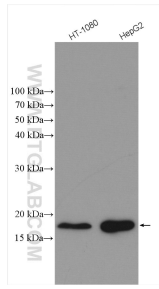
For technical support and original validation data for this product please contact:

T: 1 (888) 4PTGLAB (1-888-478-4522) (toll free in USA), or 1(312) 455-8498 (outside USA)

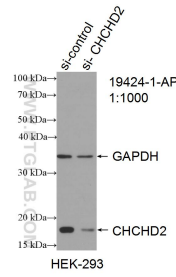
E: proteintech@ptglab.com  
W: ptglab.com

This product is exclusively available under Proteintech Group brand and is not available to purchase from any other manufacturer.

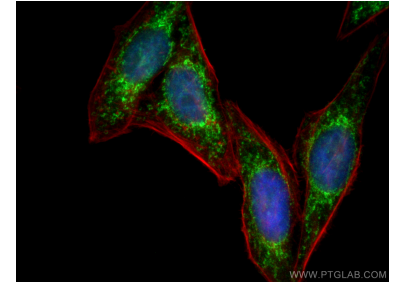
## Ausgewählte Validierungsdaten



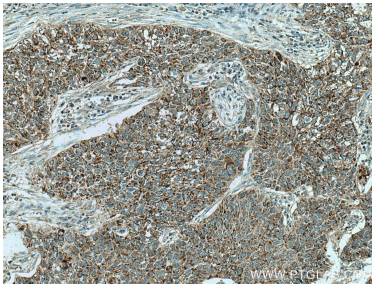
Various lysates were subjected to SDS PAGE followed by western blot with 19424-1-AP (CHCHD2 antibody) at dilution of 1:1000 incubated at room temperature for 1.5 hours.



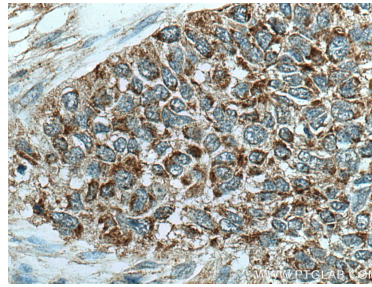
WB result of CHCHD2 antibody (19424-1-AP; 1:1000); incubated at room temperature for 1.5 hours) with sh-Control and sh-CHCHD2 transfected HEK-293 cells.



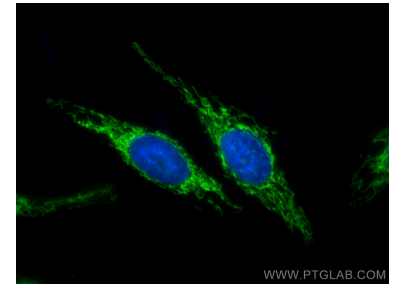
Immunofluorescent analysis of (4% PFA) fixed HepG2 cells using CHCHD2 antibody (19424-1-AP) at dilution of 1:200 and CoraLite@488-Conjugated AffiniPure Goat Anti-Rabbit IgG(H+L), CL594-Phalloidine (red).



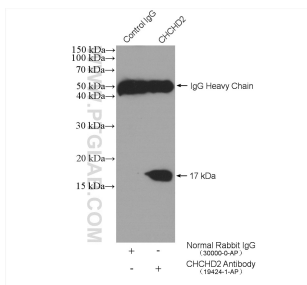
Immunohistochemical analysis of paraffin-embedded human lung cancer tissue slide using 19424-1-AP (CHCHD2 antibody) at dilution of 1:200 (under 10x lens). Heat mediated antigen retrieval with Tris-EDTA buffer (pH 9.0).



Immunohistochemical analysis of paraffin-embedded human lung cancer tissue slide using 19424-1-AP (CHCHD2 antibody) at dilution of 1:200 (under 40x lens). Heat mediated antigen retrieval with Tris-EDTA buffer (pH 9.0).



Immunofluorescent analysis of (4% PFA) fixed HepG2 cells using CHCHD2 antibody (19424-1-AP) at dilution of 1:400 and CoraLite@488-Conjugated AffiniPure Goat Anti-Rabbit IgG(H+L).



IP result of anti-CHCHD2 (IP:19424-1-AP, 4ug; Detection:19424-1-AP 1:1000) with HepG2 cells lysate 2520 ug.