

Nur für Forschungszwecke

SEZ6L2 Polyklonaler Antikörper

Katalog-Nr.:19428-1-AP



Allgemeine Informationen

Katalog-Nr.: 19428-1-AP	GenBank-Zugangsnummer: BC000567	Reinigungsmethode: Antigen-Affinitätsreinigung
Größe: 150ul , Konzentration: 600 µg/ml von Nanodrop;	GeneID (NCBI): 26470	Empfohlene Verdünnungen: WB 1:1000-1:4000
Wirt: Kaninchen	Vollständiger Name: seizure related 6 homolog (mouse)- like 2	
Isotyp: IgG	Berechnete Masse: 910 aa, 98 kDa	
Immunogen Katalognummer: AG13760	Beobachtete Masse: 150 kDa	

Anwendungen

Geprüfte Anwendungen: WB, ELISA	Positivkontrollen: WB : Maushirngewebe, Rattenhirngewebe
Getestete Reaktivität: Human, Maus, Ratte	

Hintergrundinformationen

Seizure 6-like protein 2 (SEZ6L2) is a type 1 transmembrane protein predominantly expressed in the brain. It belongs to the seizure-related gene 6 (SEZ6) family, which contains SEZ6, SEZ6L and SEZ6L2. SEZ6 family members have been shown to influence synapse numbers and dendritic morphology and are linked to various neurological and psychiatric disorders (PMID: 33936031). SEZ6L2 is a part of the AMPA receptor and acts as a scaffolding protein to link GluR1 to adducin (PMID: 29032200). Overexpression of SEZ6L2 has been reported in a variety of cancers, including lung cancer, hepatocellular carcinoma, thyroid carcinoma, cholangiocarcinoma (PMID: 16863507; 35117286; 35284305; 32148567). SEZ6L2 can be glycosylated and the apparent molecular weight can be raised to 150-170 kDa (PMID: 26698217; 24272587).

Lagerung

Lagerungsbedingungen:
Bei -20°C lagern. Nach dem Versand ein Jahr lang stabil
Lagerungspuffer:
PBS mit 0.02% Natriumazid und 50% Glycerin pH 7.3.
Aliquotieren ist nicht notwendig bei -20°C Lagerung

*** 20ul-Größen enthalten 0.1% BSA

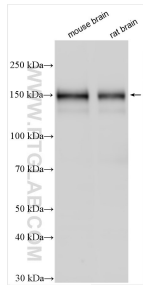
For technical support and original validation data for this product please contact:

T: 1 (888) 4PTGLAB (1-888-478-4522) (toll free
in USA), or 1(312) 455-8498 (outside USA)

E: proteintech@ptglab.com
W: ptglab.com

This product is exclusively available under Proteintech Group brand and is not available to purchase from any other manufacturer.

Ausgewählte Validierungsdaten



Various lysates were subjected to SDS PAGE followed by western blot with 19428-1-AP (SEZ6L2 antibody) at dilution of 1:2000 incubated at room temperature for 1.5 hours.