

## Allgemeine Informationen

<b>Katalog-Nr.:</b> 19483-1-AP	<b>GenBank-Zugangsnummer:</b> NM_006617	<b>Reinigungsmethode:</b> Antigen-Affinitätsreinigung
<b>Größe:</b> 150ul , Konzentration: 600 µg/ml von Nanodrop;	<b>GeneID (NCBI):</b> 10763	<b>Empfohlene Verdünnungen:</b> WB 1:500-1:1000 IHC 1:200-1:800 IF 1:10-1:100
<b>Wirt:</b> Kaninchen	<b>Vollständiger Name:</b> nestin	
<b>Isotyp:</b> IgG	<b>Berechnete Masse:</b> 177 kDa	
	<b>Beobachtete Masse:</b> 170-180 kDa	

## Anwendungen

### Geprüfte Anwendungen:

IF, IHC, WB, ELISA

### In Publikationen genannte Anwendungen:

FC, IF, IHC, WB

### Getestete Reaktivität:

Human, Maus, Ratte

### Zitierte Arten:

Human, Maus, Ratte, Zebrafisch

**Hinweis-IHC: Antigenmaskierung mit TE-Puffer pH 9,0 empfohlen. (\*) Wahlweise kann die Antigenmaskierung auch mit Citratpuffer pH 6,0 erfolgen.**

### Positivkontrollen:

WB : Maushirngewebe, Rattenhirngewebe

IHC : humanes Nierengewebe, humanes Gliomgewebe, Maushirngewebe

IF : U-251-Zellen, Maushirngewebe, Rattenhirngewebe, SH-SY5Y-Zellen

## Hintergrundinformationen

Nestin, also named as NES and Nbla00170, is a class VI intermediate filament protein expressed in stem cells of the central nervous system (CNS) but not in mature CNS cells. Its expression is used extensively as a marker for neural lineage cells derived from human embryonic stem (hES) and induced pluripotent stem (iPS) cells. Nestin is also expressed in non-neural stem cell populations such as pancreatic islet progenitors and hematopoietic progenitors. Nestin can be detected as 220-240 kDa and 240-280 kDa. Studies point toward nestin heavy posttranslational modifications as possibly serving particular functions in podocytes and in a few other particular cell types (PMID: 17210924).

## Bemerkenswerte Veröffentlichungen

Verfasser	Pubmed ID	Journal	Anwendung
Chenlong Li	31558707	Cell Death Dis	WB
Lili Ma	36132985	J Immunol Res	IF
Jiansheng Chen	31511040	J Exp Clin Cancer Res	WB

## Lagerung

### Lagerungsbedingungen:

Bei -20°C lagern. Nach dem Versand ein Jahr lang stabil

### Lagerungspuffer:

PBS mit 0.02% Natriumazid und 50% Glycerin pH 7.3.

Aliquotieren ist nicht notwendig bei -20°C Lagerung

\*\*\* 20ul-Größen enthalten 0.1% BSA

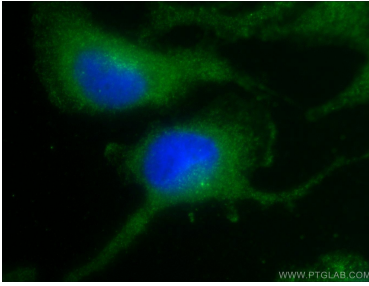
For technical support and original validation data for this product please contact:

T: 1 (888) 4PTGLAB (1-888-478-4522) (toll free in USA), or 1(312) 455-8498 (outside USA)

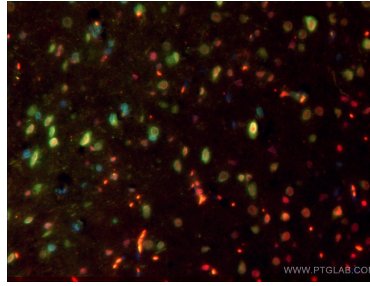
E: [proteintech@ptglab.com](mailto:proteintech@ptglab.com)  
 W: [ptglab.com](http://ptglab.com)

This product is exclusively available under Proteintech Group brand and is not available to purchase from any other manufacturer.

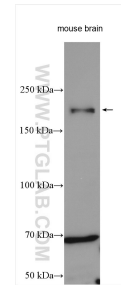
## Ausgewählte Validierungsdaten



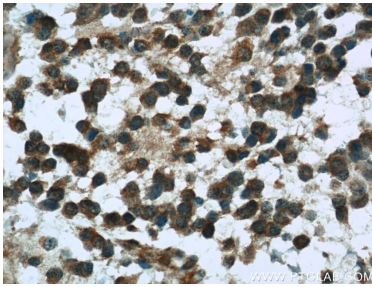
Immunofluorescent analysis of U-251 cells using 19483-1-AP (Nestin antibody) at dilution of 1:25 and Alexa Fluor 488-conjugated AffiniPure Goat Anti-Rabbit IgG(H+L).



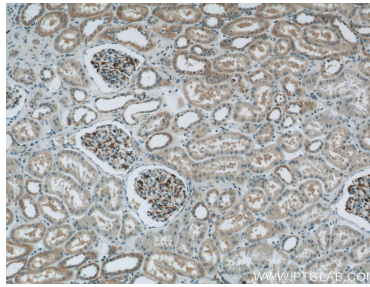
Immunofluorescent analysis of (4% PFA) fixed rat brain tissue using 19483-1-AP (Nestin antibody) at dilution of 1:100 and CoraLite488-Conjugated AffiniPure Goat Anti-Rabbit IgG(H+L). The section was co-stained with sox2 (66411-1-Ig, red).



Mouse brain lysates were subjected to SDS PAGE followed by western blot with 19483-1-AP (Nestin antibody) at dilution of 1:500 incubated at room temperature for 1.5 hours.



Immunohistochemical analysis of paraffin-embedded human gliomas tissue slide using 19483-1-AP (Nestin Antibody) at dilution of 1:100 (under 40x lens).



Immunohistochemical analysis of paraffin-embedded human kidney tissue slide using 19483-1-AP (Nestin Antibody) at dilution of 1:400 (under 10x lens).