

Nur für Forschungszwecke

# ADCY3 Polyklonaler Antikörper

Katalog-Nr.:19492-1-AP

10 Publikationen



## Allgemeine Informationen

Katalog-Nr.:  
19492-1-AP

Größe:  
150ul , Konzentration: 1300 µg/ml von109  
Nanodrop und 653 µg/ml durch die  
Bradford-Methode mit BSA als  
Standard;

Wirt:  
Kaninchen

Isotyp:  
IgG

GenBank-Zugangsnummer:  
NM\_004036

GeneID (NCBI):  
Vollständiger Name:  
adenylate cyclase 3

Berechnete Masse:  
129 kDa

Beobachtete Masse:  
170-180 kDa

Reinigungsmethode:

Antigen-Affinitätsreinigung

Empfohlene Verdünnungen:

WB 1:500-1:1000  
IP 0.5-4.0 ug für IP und 1:500-1:1000  
für WB  
IHC 1:20-1:200  
IF 1:50-1:500

## Anwendungen

Geprüfte Anwendungen:

IF, IHC, IP, WB, ELISA

In Publikationen genannte Anwendungen:

IF, IHC, WB

Getestete Reaktivität:

Human, Maus, Ratte

Zitierte Arten:

Human, Maus, Ratte

**Hinweis-IHC: Antigendemaskierung mit TE-Puffer pH 9,0 empfohlen. (\*) Wahlweise kann die Antigendemaskierung auch mit Citratpuffer pH 6,0 erfolgen.**

Positivkontrollen:

WB : Maus-Skelettmuskelgewebe, humanes Hirngewebe

IP : MDCK-Zellen,

IHC : humanes Nierengewebe, humanes Herzgewebe

IF : MDCK-Zellen, Rattenhirngewebe

## Hintergrundinformationen

ADCY3 is an adenylate cyclase (AC) functioning to convert ATP to cAMP in response to signals initiated by activation of Gs-coupled receptors. To date, 10 isoforms of AC have been cloned in mammals. Initially identified in olfactory cilia, ADCY3 is regarded as the olfactory isoform and required for detection of odorants. Recently it has been found that outside of the olfactory epithelium the olfactory-like signaling pathway including AC3 may also have a key role in spermatogenesis and spermatozoa functions. In addition, the ciliary location of AC3 makes it as a prominent marker for primary cilia in brain.AC3 is typically found at 130 kDa in olfactory tissues.In nonolfactory tissues (such as sperm), this protein is reported to migrate with a molecular mass of 55 kDa,occasionally accompanied by additional bands at either 90 or 130 kDa(PMID:9539154).

## Bemerkenswerte Veröffentlichungen

Verfasser	Pubmed ID	Journal	Anwendung
Casey D Gailey	32935890	Dev Dyn	IF
Alessia Di Nardo	34624412	Neurosci Res	WB
Jie Ran	35619548	Adv Sci (Weinh)	IF

## Lagerung

Lagerungsbedingungen:

Bei -20°C lagern. Nach dem Versand ein Jahr lang stabil

Lagerungspuffer:

PBS mit 0.02% Natriumazid und 50% Glycerin pH 7.3.

Aliquotieren ist nicht notwendig bei -20°C Lagerung

\*\*\* 20ul-Größen enthalten 0.1% BSA

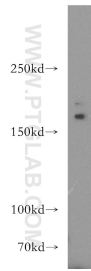
For technical support and original validation data for this product please contact:

T: 1 (888) 4PTGLAB (1-888-478-4522) (toll free in USA), or 1(312) 455-8498 (outside USA)

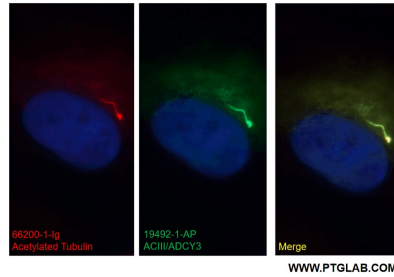
E: proteintech@ptglab.com  
W: ptglab.com

This product is exclusively available under Proteintech Group brand and is not available to purchase from any other manufacturer.

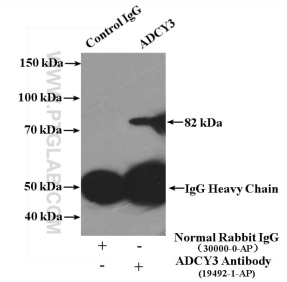
## Ausgewählte Validierungsdaten



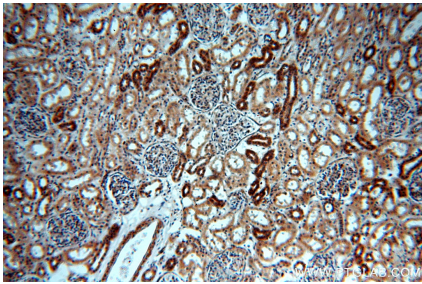
mouse skeletal muscle tissue were subjected to SDS PAGE followed by western blot with 19492-1-AP (ADCY3 antibody) at dilution of 1:300 incubated at room temperature for 1.5 hours.



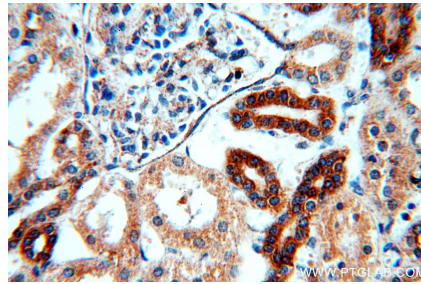
Immunofluorescent analysis of (4% PFA) fixed MDCK cells using 19492-1-AP (ADCY3 antibody) at dilution of 1:50 and Alexa Fluor 488-conjugated AffiniPure Goat Anti-Rabbit IgG(H+L).



IP Result of anti-ADCY3 (IP:19492-1-AP, 4ug; Detection:19492-1-AP 1:500) with MDCK cells lysate 3500ug.



Immunohistochemical analysis of paraffin-embedded human kidney using 19492-1-AP (ADCY3 antibody) at dilution of 1:100 (under 10x lens).



Immunohistochemical analysis of paraffin-embedded human kidney using 19492-1-AP (ADCY3 antibody) at dilution of 1:100 (under 40x lens).