

Allgemeine Informationen

Katalog-Nr.:
19497-1-AP

Größe:
150ul, Konzentration: 600 µg/ml von
Nanodrop und 300 µg/ml durch die
Bradford-Methode mit BSA als
Standard;

Wirt:
Kaninchen

Isotyp:
IgG

GenBank-Zugangsnummer:
NM_002033

GeneID (NCBI):
2526

Vollständiger Name:
fucosyltransferase 4 (alpha (1,3)
fucosyltransferase, myeloid-specific)

Berechnete Masse:
59 kDa

Beobachtete Masse:
95-140 kDa

Reinigungsmethode:

Antigen-Affinitätsreinigung

Empfohlene Verdünnungen:

WB 1:500-1:1000
IP 0.5-4.0 µg für IP und 1:500-1:1000
für WB
IHC 1:50-1:500

Anwendungen

Geprüfte Anwendungen:

FC, IHC, IP, WB, ELISA

In Publikationen genannte Anwendungen:

IF, IHC, WB

Getestete Reaktivität:

Human, Maus

Zitierte Arten:

Human, Maus

Positivkontrollen:

WB: HeLa-Zellen, HepG2-Zellen, HL-60-Zellen, Jurkat-Zellen, NIH/3T3-Zellen

IP: HeLa-Zellen,

IHC: humanes Lungenkarzinomgewebe, humanes Gliomgewebe, humanes Hautkrebsgewebe

Hinweis-IHC: Antigenmaskierung mit TE-Puffer pH 9,0 empfohlen. (*) Wahlweise kann die Antigenmaskierung auch mit Citratpuffer pH 6,0 erfolgen.

Hintergrundinformationen

FUT4, also named as ELFT and FCT3A, belongs to the glycosyltransferase 10 family. FUT4 may catalyze alpha-1,3 glycosidic linkages involved in the expression of Lewis X/SSEA-1 and VIM-2 antigens. The expression of CD15 (acts as a terminal glycotope in glycoproteins and glycolipids) is directed by FUT4 in promyelocytes and monocytes. FUT4 is an antigenic epitope defined as a Lewis X carbohydrate structure is expressed on murine embryonal carcinoma cells (EC), murine ES and iPS cells, and murine and human germ cells. It is widely used as a positive surface marker for mouse undifferentiated ES and iPS cells and a negative surface marker for human undifferentiated ES and iPS cells. Expression is down-regulated following differentiation of murine EC and ES cells, while the differentiation of human EC and ES cells is accompanied by an increase in FUT4 expression. FUT4 is associated with cell adhesion, migration and differentiation. 19497-1-AP antibody detects the glycosylated isoform proteins around 95-140 kDa in SDS-PAGE. (PMID: 28706275, 28914881, 11278338)

Bemerkenswerte Veröffentlichungen

Verfasser	Pubmed ID	Journal	Anwendung
Faisal Aziz	26427350	Toxicol In Vitro	WB, IF
Qin Zheng	28914881	Cell Death Differ	WB,IF
Chaoyue Zhong	36139441	Cells	WB

Lagerung

Lagerungsbedingungen:

Bei -20°C lagern. Nach dem Versand ein Jahr lang stabil

Lagerungspuffer:

PBS mit 0.02% Natriumazid und 50% Glycerin pH 7.3.

Aliquotieren ist nicht notwendig bei -20°C Lagerung

***** 20ul-Größen enthalten 0.1% BSA**

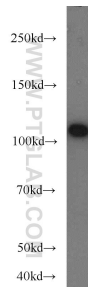
For technical support and original validation data for this product please contact:

T: 1 (888) 4PTGLAB (1-888-478-4522) (toll free in USA), or 1(312) 455-8498 (outside USA)

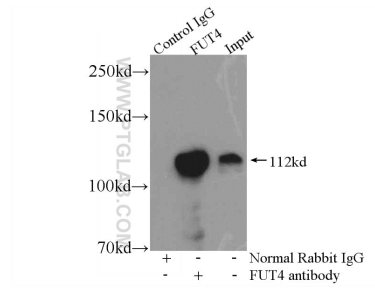
E: proteintech@ptglab.com
W: ptglab.com

This product is exclusively available under Proteintech Group brand and is not available to purchase from any other manufacturer.

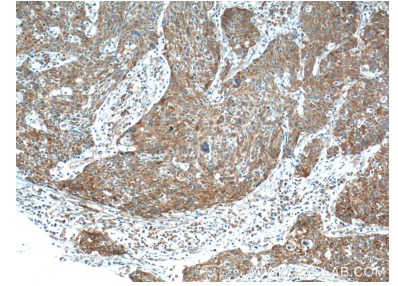
Ausgewählte Validierungsdaten



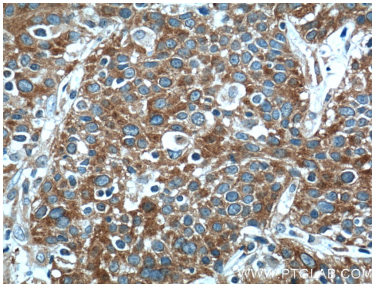
HeLa cells were subjected to SDS PAGE followed by western blot with 19497-1-AP (FUT4 antibody) at dilution of 1:500 incubated at room temperature for 1.5 hours.



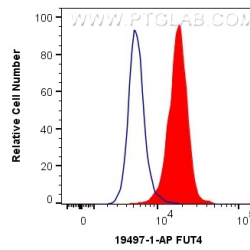
IP Result of anti-FUT4 (IP:19497-1-AP, 4ug; Detection:19497-1-AP 1:500) with HeLa cells lysate 2480ug.



Immunohistochemical analysis of paraffin-embedded human lung cancer tissue slide using 19497-1-AP (FUT4 Antibody) at dilution of 1:400 (under 10x lens). Heat mediated antigen retrieval with Tris-EDTA buffer (pH 9.0).



Immunohistochemical analysis of paraffin-embedded human lung cancer tissue slide using 19497-1-AP (FUT4 Antibody) at dilution of 1:400 (under 40x lens). Heat mediated antigen retrieval with Tris-EDTA buffer (pH 9.0).



1X10⁶ A375 cells were intracellularly stained with 0.5 ug Anti-Human FUT4 (19497-1-AP) and CoraLite[®]488-Conjugated AffiniPure Goat Anti-Rabbit IgG(H+L) at dilution 1:1000 (red), or 0.5 ug Control Antibody. Cells were fixed with 4% PFA and permeabilized with Flow Cytometry Perm Buffer (PF00011-C).