

Allgemeine Informationen

Katalog-Nr.:
19515-1-AP

Größe:
150ul , Konzentration: 350 µg/ml von
Nanodrop und 267 µg/ml durch die
Bradford-Methode mit BSA als
Standard;

Wirt:
Kaninchen

Isotyp:
IgG

GenBank-Zugangsnummer:
NM_031948

GeneID (NCBI):
83886

Vollständiger Name:
protease, serine 27

Berechnete Masse:
32 kDa

Beobachtete Masse:
28 kDa

Reinigungsmethode:

Antigen-Affinitätsreinigung

Empfohlene Verdünnungen:

WB 1:200-1:1000

IP 0.5-4.0 ug für IP und 1:200-1:1000
für WB

IHC 1:50-1:500

Anwendungen

Geprüfte Anwendungen:

IHC, IP, WB, ELISA

Getestete Reaktivität:

Human, Maus

**Hinweis-IHC: Antigenmaskierung mit TE-
Puffer pH 9,0 empfohlen. (*) Wahlweise
kann die Antigenmaskierung auch mit
Citratpuffer pH 6,0 erfolgen.**

Positivkontrollen:

WB : Maus-Pankreasgewebe,

IP : SW 1990-Zellen,

IHC : humanes Pankreasgewebe, humanes

Ösophaguskarzinomgewebe, Maus-Pankreasgewebe

Hintergrundinformationen

PRSS27, also named as CAPH2, MPN, belongs to the peptidase S1 family. The trypsin-like serine protease marapsin (Prss27) is a member of the large protease gene cluster at human chromosome 16p13.3. The Prss27 gene is expressed by a variety of human, mouse, and opossum tissues. In humans and mice, it is especially abundant in stratified squamous epithelia of cornea, larynx, esophagus, and cervix and is induced in wounded and psoriatic skin (PMID: 23447538). Prss27 expression was restricted to tissues containing stratified squamous epithelia and was absent or only weakly expressed in all other tissues, including the pancreas.

Lagerung

Lagerungsbedingungen:

Bei -20°C lagern. Nach dem Versand ein Jahr lang stabil

Lagerungspuffer:

PBS mit 0.02% Natriumazid und 50% Glycerin pH 7.3.

Aliquotieren ist nicht notwendig bei -20°C Lagerung

***** 20ul-Größen enthalten 0.1% BSA**

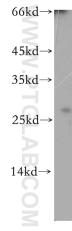
For technical support and original validation data for this product please contact:

T: 1 (888) 4PTGLAB (1-888-478-4522) (toll free
in USA), or 1(312) 455-8498 (outside USA)

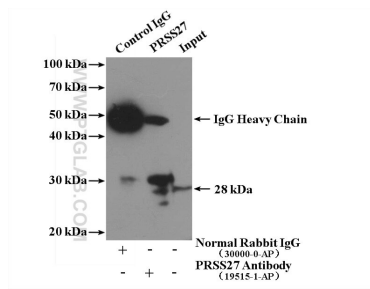
E: proteintech@ptglab.com
W: ptglab.com

**This product is exclusively available under Proteintech
Group brand and is not available to purchase from any
other manufacturer.**

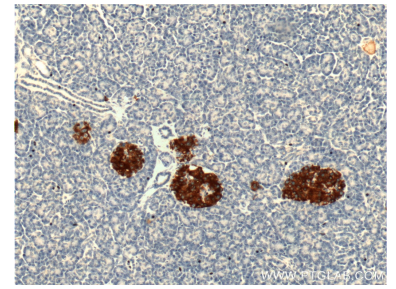
Ausgewählte Validierungsdaten



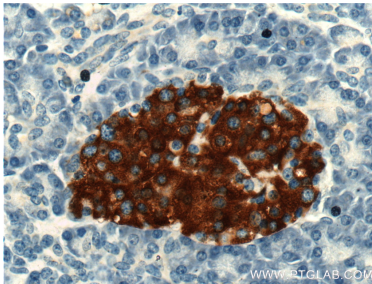
mouse pancreas tissue were subjected to SDS PAGE followed by western blot with 19515-1-AP (PRSS27 antibody) at dilution of 1:300 incubated at room temperature for 1.5 hours.



IP Result of anti-PRSS27 (IP:19515-1-AP, 4ug; Detection:19515-1-AP 1:300) with SW 1990 cells lysate 2960ug.



Immunohistochemical analysis of paraffin-embedded human pancreas tissue slide using 19515-1-AP (PRSS27 Antibody) at dilution of 1:200 (under 10x lens).



Immunohistochemical analysis of paraffin-embedded human pancreas tissue slide using 19515-1-AP (PRSS27 Antibody) at dilution of 1:200 (under 40x lens).