

Nur für Forschungszwecke

CDK1-Specific Polyklonaler Antikörper



Katalog-Nr.:19532-1-AP

Vorgestelltes Produkt

138 Publikationen

Allgemeine Informationen

Katalog-Nr.: 19532-1-AP	GenBank-Zugangsnummer: NM_001786	Reinigungsmethode: Antigen-Affinitätsreinigung
Größe: 150ul , Konzentration: 550 µg/ml von Nanodrop;	GeneID (NCBI): 983	Empfohlene Verdünnungen: WB 1:2000-1:10000 IHC 1:100-1:400 IF 1:20-1:200
Wirt: Kaninchen	Vollständiger Name: cell division cycle 2, G1 to S and G2 to M	
Isotyp: IgG	Berechnete Masse: 34 kDa	
	Beobachtete Masse: 34 kDa	

Anwendungen

Geprüfte Anwendungen:

FC, IF, IHC, WB, ELISA

In Publikationen genannte Anwendungen:

IF, IHC, WB

Getestete Reaktivität:

Human, Maus, Ratte

Zitierte Arten:

Hausschwein, Human, Maus, Ratte

Positivkontrollen:

WB : A431-Zellen, C2C12-Zellen, C6-Zellen, COS-7-Zellen, HEK-293-Zellen, HeLa-Zellen, HepG2-Zellen, Jurkat-Zellen, MCF-7-Zellen, Neuro-2a-Zellen, NIH/3T3-Zellen

IHC : humanes Zervixkarzinomgewebe,

IF : HeLa-Zellen,

Hinweis-IHC: Antigendemaskierung mit TE-Puffer pH 9,0 empfohlen. (*) Wahlweise kann die Antigendemaskierung auch mit Citratpuffer pH 6,0 erfolgen.

Hintergrundinformationen

CDK1, also named as CDC2, belongs to the protein kinase superfamily, CMGC Ser/Thr protein kinase family and CDC2/CDKX subfamily. CDK1 plays a key role in the control of the eukaryotic cell cycle. It is required in higher cells for entry into S-phase and mitosis. CDK1 is a catalytic subunit of the highly conserved protein kinase complex known as M-phase promoting factor (MPF), which is essential for G1/S and G2/M phase transitions of eukaryotic cell cycle. It is a component of the kinase complex that phosphorylates the repetitive C-terminus of RNA polymerase II. Mitotic cyclins stably associate with CDK1 and function as regulatory subunits. CDK1 has 2 isoforms produced by alternative splicing with the molecular mass of 34 kDa and 27 kDa.

Bemerkenswerte Veröffentlichungen

Verfasser	Pubmed ID	Journal	Anwendung
Xiaoman Chen	30207732	Mol Pharm	WB
Hui-Ting Liu	34667869	Laryngoscope Investig Otolaryngol	WB
Hongxia Li	34558311	Epigenomics	WB

Lagerung

Lagerungsbedingungen:

Bei -20°C lagern. Nach dem Versand ein Jahr lang stabil

Lagerungspuffer:

PBS mit 0.02% Natriumazid und 50% Glycerin pH 7.3.

Aliquotieren ist nicht notwendig bei -20°C Lagerung

*** 20ul-Größen enthalten 0.1% BSA

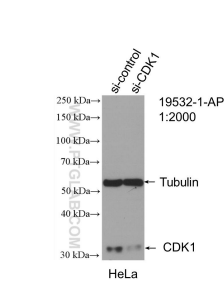
For technical support and original validation data for this product please contact:

T: 1 (888) 4PTGLAB (1-888-478-4522) (toll free in USA), or 1(312) 455-8498 (outside USA)

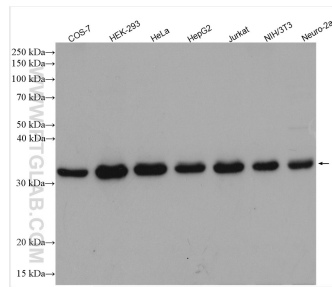
E: proteintech@ptglab.com
W: ptglab.com

This product is exclusively available under Proteintech Group brand and is not available to purchase from any other manufacturer.

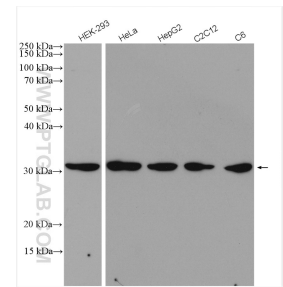
Ausgewählte Validierungsdaten



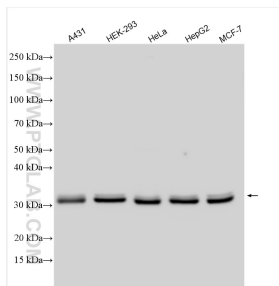
WB result of CDK1-Specific antibody (19532-1-AP; 1:2000; incubated at room temperature for 1.5 hours) with sh-Control and sh-CDK1-Specific transfected HeLa cells.



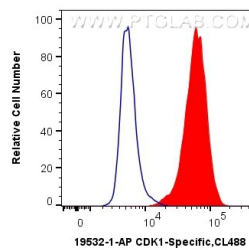
Various lysates were subjected to SDS PAGE followed by western blot with 19532-1-AP (CDK1-Specific antibody) at dilution of 1:3000 incubated at room temperature for 1.5 hours.



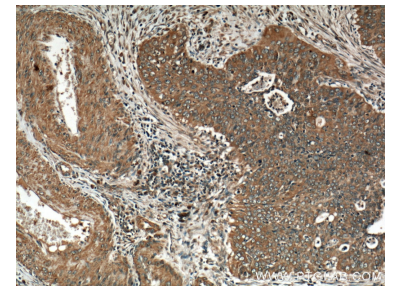
Various lysates were subjected to SDS PAGE followed by western blot with 19532-1-AP (CDK1-Specific antibody) at dilution of 1:1000 incubated at room temperature for 1.5 hours.



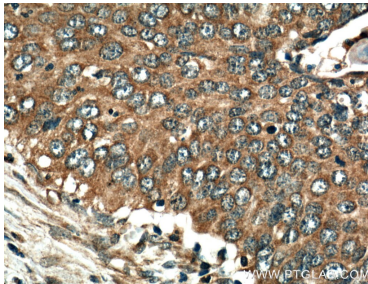
Various lysates were subjected to SDS PAGE followed by western blot with 19532-1-AP (CDK1-Specific antibody) at dilution of 1:5000 incubated at room temperature for 1.5 hours.



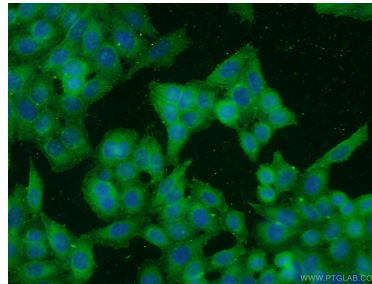
1×10^6 HeLa cells were intracellularly stained with 0.4 ug Anti-Human CDK1-Specific (19532-1-AP) and CoraLite®488-Conjugated AffiniPure Goat Anti-Rabbit IgG(H+L) at dilution 1:1000 (red), or 0.4 ug Control Antibody. Cells were fixed with 4% PFA and permeabilized with Flow Cytometry Perm Buffer (PF00011-C).



Immunohistochemical analysis of paraffin-embedded human cervical cancer tissue slide using 19532-1-AP (CDK1-Specific antibody) at dilution of 1:200 (under 10x lens).



Immunohistochemical analysis of paraffin-embedded human cervical cancer tissue slide using 19532-1-AP (CDK1-Specific antibody) at dilution of 1:200 (under 40x lens).



Immunofluorescent analysis of HeLa cells using 19532-1-AP (CDK1-Specific antibody) at dilution of 1:50 and Alexa Fluor 488-conjugated AffiniPure Goat Anti-Rabbit IgG(H+L).