

CHKA-Specific Polyklonaler Antikörper

Katalog-Nr.:19537-1-AP

Allgemeine Informationen

Katalog-Nr.: 19537-1-AP	GenBank-Zugangsnummer: NM_001277	Reinigungsmethode: Antigen-Affinitätsreinigung
Größe: 150ul , Konzentration: 450 µg/ml von Nanodrop und 273 µg/ml durch die Bradford-Methode mit BSA als Standard;	GeneID (NCBI): 1119	Empfohlene Verdünnungen: WB 1:200-1:1000 IHC 1:20-1:200 IF 1:10-1:100
Wirt: Kaninchen	Vollständiger Name: choline kinase alpha	
Isotyp: IgG	Berechnete Masse: 52 kDa	
	Beobachtete Masse: 50 kDa	

Anwendungen

Geprüfte Anwendungen:

IF, IHC, WB, ELISA

Getestete Reaktivität:

Human, Maus, Ratte

Hinweis-IHC: Antigendemaskierung mit TE-Puffer pH 9,0 empfohlen. (*) Wahlweise kann die Antigendemaskierung auch mit Citratpuffer pH 6,0 erfolgen.

Positivkontrollen:

WB : HepG2-Zellen, COLO 320-Zellen, humanes Hodengewebe, Maushodengewebe, Maus-Kolongewebe, Raji-Zellen

IHC : humanes Mammakarzinomgewebe, humanes Lebergewebe

IF : HepG2-Zellen,

Hintergrundinformationen

Choline kinase alpha, also named as CHK, CKI and CK, belongs to the choline/ethanolamine kinase family. CHKa may have a regulatory role in phosphatidylcholine synthesis. CHKA catalyze the reaction: ATP + choline = ADP + O-phosphocholine. The human enzyme resembled the rat liver enzyme over the entire sequence. It also resembled the yeast enzyme in the carboxy-terminal region, but not in the amino-terminal region(PMID:1618328).And it expresses in human brain tissue but not in human skeletal muscle(PMID:21665002).It has 2 isoforms produced by alternative splicing.The antibody is specific to CHKA.

Lagerung

Lagerungsbedingungen:

Bei -20°C lagern. Nach dem Versand ein Jahr lang stabil

Lagerungspuffer:

PBS mit 0.02% Natriumazid und 50% Glycerin pH 7.3.

Aliquotieren ist nicht notwendig bei -20°C Lagerung

***** 20ul-Größen enthalten 0.1% BSA**

For technical support and original validation data for this product please contact:

T: 1 (888) 4PTGLAB (1-888-478-4522) (toll free in USA), or 1(312) 455-8498 (outside USA)

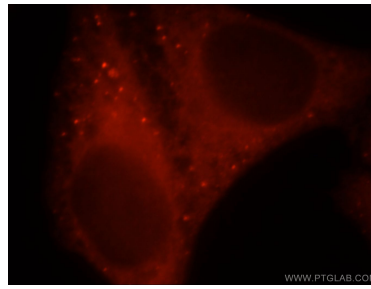
E: proteintech@ptglab.com
W: ptglab.com

This product is exclusively available under Proteintech Group brand and is not available to purchase from any other manufacturer.

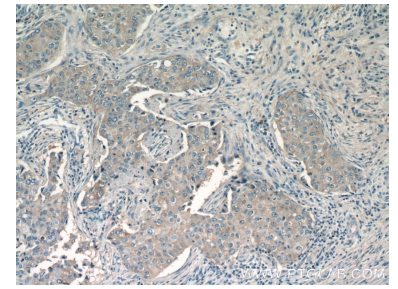
Ausgewählte Validierungsdaten



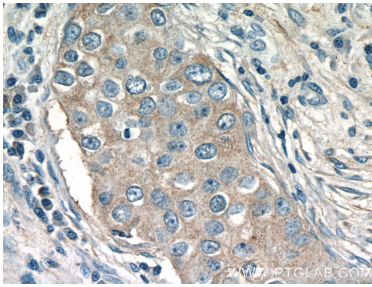
HepG2 cells were subjected to SDS PAGE followed by western blot with 19537-1-AP (CHKA-Specific antibody) at dilution of 1:300 incubated at room temperature for 1.5 hours.



Immunofluorescent analysis of HepG2 cells, using CHKA antibody 19537-1-AP at 1:25 dilution and Rhodamine-labeled goat anti-rabbit IgG (red).



Immunohistochemical analysis of paraffin-embedded human breast cancer tissue slide using 19537-1-AP (CHKA-Specific Antibody) at dilution of 1:50 (under 10x lens).



Immunohistochemical analysis of paraffin-embedded human breast cancer tissue slide using 19537-1-AP (CHKA-Specific Antibody) at dilution of 1:50 (under 40x lens).