

## Allgemeine Informationen

<b>Katalog-Nr.:</b> 19666-1-AP	<b>GenBank-Zugangsnummer:</b> BC001890	<b>Reinigungsmethode:</b> Antigen-Affinitätsreinigung
<b>Größe:</b> 150ul , Konzentration: 260 µg/ml von Nanodrop;	<b>GeneID (NCBI):</b> 2645	<b>Empfohlene Verdünnungen:</b> WB 1:1000-1:4000 IP 0.5-4.0 ug für IP und 1:500-1:1000 für WB IHC 1:100-1:400
<b>Wirt:</b> Kaninchen	<b>Vollständiger Name:</b> glucokinase (hexokinase 4)	
<b>Isotyp:</b> IgG	<b>Berechnete Masse:</b> 52 kDa	
<b>Immunogen Katalognummer:</b> AG8116	<b>Beobachtete Masse:</b> 52 kDa	

## Anwendungen

### Geprüfte Anwendungen:

IHC, IP, WB, ELISA

### In Publikationen genannte Anwendungen:

FC, IF, IHC, WB

### Getestete Reaktivität:

Human, Maus, Ratte

### Zitierte Arten:

Maus, Ratte

### Positivkontrollen:

WB : Mauslebergewebe, Rattenlebergewebe

IP : Mauslebergewebe,

IHC : humanes Lebergewebe,

**Hinweis-IHC: Antigenmaskierung mit TE-Puffer pH 9,0 empfohlen. (\*) Wahlweise kann die Antigenmaskierung auch mit Citratpuffer pH 6,0 erfolgen.**

## Hintergrundinformationen

Glucokinase (GCK) is a structurally and functionally unique member of hexokinase family. It is expressed only in mammalian liver and pancreatic islet beta cells. Because of its unique functional characteristics, the enzyme plays an important regulatory role in glucose metabolism. The rate of glucose metabolism in liver and pancreas is a function of the activity of the enzyme (PMID:1740341). Moreover, GCK has been found to have relationship with diabetes. Defects in GCK are the cause of maturity-onset diabetes of the young type 2 (MODY2) and familial hyperinsulinemic hypoglycemia type 3 (HHF3). It has 3 isoforms produced by alternative splicing with the same molecular mass of 52 kDa.

## Bemerkenswerte Veröffentlichungen

Verfasser	Pubmed ID	Journal	Anwendung
Xiaojie Bai	34496251	Cell Rep	
Jin Wu	34687945	J Genet Genomics	WB
Cheng Liu	25397718	J Agric Food Chem	WB

## Lagerung

### Lagerungsbedingungen:

Bei -20°C lagern. Nach dem Versand ein Jahr lang stabil

### Lagerungspuffer:

PBS mit 0.02% Natriumazid und 50% Glycerin pH 7.3.

Aliquotieren ist nicht notwendig bei -20°C Lagerung

**\*\*\* 20ul-Größen enthalten 0.1% BSA**

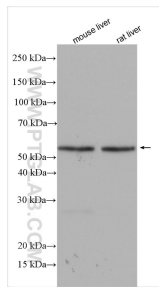
For technical support and original validation data for this product please contact:

T: 1 (888) 4PTGLAB (1-888-478-4522) (toll free in USA), or 1(312) 455-8498 (outside USA)

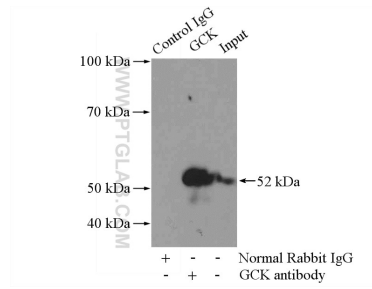
E: [proteintech@ptglab.com](mailto:proteintech@ptglab.com)  
W: [ptglab.com](http://ptglab.com)

**This product is exclusively available under Proteintech Group brand and is not available to purchase from any other manufacturer.**

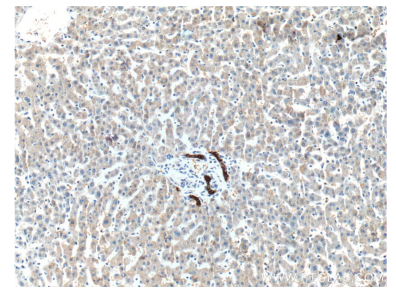
## Ausgewählte Validierungsdaten



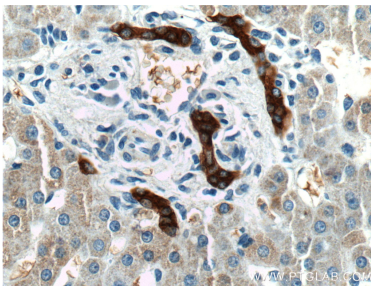
Various lysates were subjected to SDS PAGE followed by western blot with 19666-1-AP (GCK antibody) at dilution of 1:2000 incubated at room temperature for 1.5 hours.



IP Result of anti-GCK (IP:19666-1-AP, 4 $\mu$ g; Detection:19666-1-AP 1:800) with mouse liver tissue lysate 4000 $\mu$ g.



Immunohistochemical analysis of paraffin-embedded human liver tissue slide using 19666-1-AP (GCK Antibody) at dilution of 1:200 (under 10x lens).



Immunohistochemical analysis of paraffin-embedded human liver tissue slide using 19666-1-AP (GCK Antibody) at dilution of 1:200 (under 40x lens).