

Nur für Forschungszwecke

LRP2-Specific Polyklonaler Antikörper



Katalog-Nr.:19700-1-AP

Vorgestelltes Produkt

12 Publikationen

Allgemeine Informationen

Katalog-Nr.: 19700-1-AP	GenBank-Zugangsnummer: NM_004525	Reinigungsmethode: Antigen-Affinitätsreinigung
Größe: 150ul , Konzentration: 900 µg/ml von Nanodrop;	GeneID (NCBI): 4036	Empfohlene Verdünnungen: WB 1:500-1:3000 IHC 1:4000-1:16000
Wirt: Kaninchen	Vollständiger Name: low density lipoprotein-related protein 2	
Isotyp: IgG	Berechnete Masse: 522 kDa	
	Beobachtete Masse: 280 kDa	

Anwendungen

Geprüfte Anwendungen:
FC, IHC, WB, ELISA

In Publikationen genannte Anwendungen:
IF, IHC, WB

Getestete Reaktivität:
Human

Zitierte Arten:
Human, Maus, Ratte

Hinweis-IHC: Antigendemaskierung mit TE-Puffer pH 9,0 empfohlen. (*) Wahlweise kann die Antigendemaskierung auch mit Citratpuffer pH 6,0 erfolgen.

Positivkontrollen:

WB : HeLa-Zellen, HEK-293-Zellen, humanes Hirngewebe, humanes Plazenta-Gewebe

IHC : humanes Nierengewebe,

Hintergrundinformationen

LRP2, also named as gp330 and Megalin, belongs to the LDLR family. It acts together with cubilin to mediate HDL endocytosis. LRP2 may participate in regulation of parathyroid-hormone and para-thyroid-hormone-related protein release. Defects in LRP2 are the cause of Donnai-Barrow syndrome (DBS). This antibody is specific to LRP2 and detects endogenous LRP2 with an apparent molecular weight 280 kDa, which is smaller than the predicted molecular weight (522 kDa) and probably represent a proteolytic fragment of the large glycoprotein (PMID: 16638803; 8483924).

Bemerkenswerte Veröffentlichungen

Verfasser	Pubmed ID	Journal	Anwendung
Yushi Uchida	34541900	Am J Physiol Renal Physiol	WB
Hitomi Otomo	33069809	Metabolism	IHC,IF
Junqiu He	32464235	Int J Pharm	IHC

Lagerung

Lagerungsbedingungen:

Bei -20°C lagern. Nach dem Versand ein Jahr lang stabil

Lagerungspuffer:

PBS mit 0.02% Natriumazid und 50% Glycerin pH 7.3.

Aliquotieren ist nicht notwendig bei -20°C Lagerung

*** 20ul-Größen enthalten 0.1% BSA

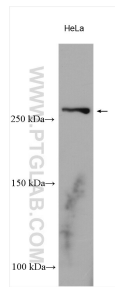
For technical support and original validation data for this product please contact:

T: 1 (888) 4PTGLAB (1-888-478-4522) (toll free in USA), or 1(312) 455-8498 (outside USA)

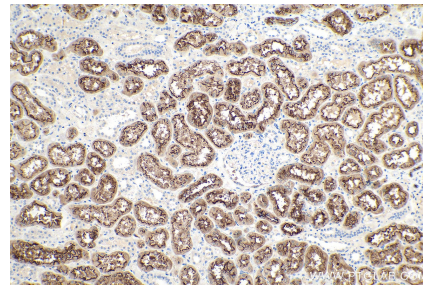
E: proteintech@ptglab.com
W: ptglab.com

This product is exclusively available under Proteintech Group brand and is not available to purchase from any other manufacturer.

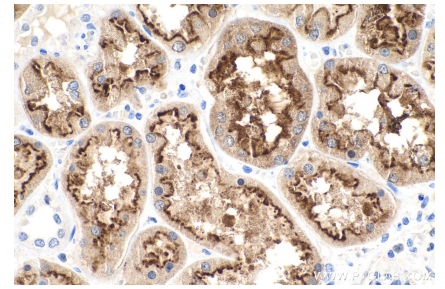
Ausgewählte Validierungsdaten



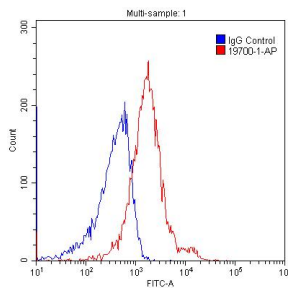
HeLa cells were subjected to SDS PAGE followed by western blot with 19700-1-AP (LRP2-Specific antibody) at dilution of 1:1500 incubated at room temperature for 1.5 hours.



Immunohistochemical analysis of paraffin-embedded human kidney tissue slide using 19700-1-AP (LRP2-Specific antibody) at dilution of 1:8000 (under 10x lens). Heat mediated antigen retrieval with Tris-EDTA buffer (pH 9.0).



Immunohistochemical analysis of paraffin-embedded human kidney tissue slide using 19700-1-AP (LRP2-Specific antibody) at dilution of 1:8000 (under 40x lens). Heat mediated antigen retrieval with Tris-EDTA buffer (pH 9.0).



1×10^6 HEK-293 cells were stained with 0.2ug LRP2-Specific antibody (19700-1-AP, red) and control antibody (blue). Fixed with 4% PFA blocked with 3% BSA (30 min). Alexa Fluor 488-conjugated AffiniPure Goat Anti-Rabbit IgG(H+L) with dilution 1:1500.