

Nur für Forschungszwecke

SLK Polyklonaler Antikörper

Katalog-Nr.:19743-1-AP



Allgemeine Informationen

Katalog-Nr.: 19743-1-AP	GenBank-Zugangsnummer: NM_014720	Reinigungsmethode: Antigen-Affinitätsreinigung
Größe: 150ul , Konzentration: 1200 µg/ml von9748 Nanodrop;	GeneID (NCBI): 9748	Empfohlene Verdünnungen: WB 1:500-1:3000 IF 1:50-1:500
Wirt: Kaninchen	Vollständiger Name: STE20-like kinase (yeast)	
Isotyp: IgG	Berechnete Masse: 143 kDa	
	Beobachtete Masse: 143-160 kDa, 210-220 kDa	

Anwendungen

Geprüfte Anwendungen: IF, WB,ELISA	Positivkontrollen:
Getestete Reaktivität: Human, Maus	WB : HEK-293-Zellen, HeLa-Zellen, humanes Hirngewebe, Mauslebergewebe, MCF-7-Zellen, THP-1-Zellen
	IF : HepG2-Zellen,

Hintergrundinformationen

SLK, also named as KIAA0204 and STK2, belongs to the protein kinase superfamily, STE Ser/Thr protein kinase family and STE20 subfamily. SLK plays an important role in cell proliferation and cytoskeletal remodeling. In fibroblasts, SLK has been shown to respond to FAK/Src signaling and regulate focal adhesion turnover through Paxillin phosphorylation. Full-length SLK (~220 kDa) has also been shown to be essential for embryonic development. In myoblasts, the overexpression of a dominant negative SLK is sufficient to block myoblast fusion. (PMID: 28153048, PMID: 25882817, PMID: 23815977)

Lagerung

Lagerungsbedingungen:
Bei -20°C lagern. Nach dem Versand ein Jahr lang stabil
Lagerungspuffer:
PBS mit 0.02% Natriumazid und 50% Glycerin pH 7.3.
Aliquotieren ist nicht notwendig bei -20°C Lagerung

***** 20ul-Größen enthalten 0.1% BSA**

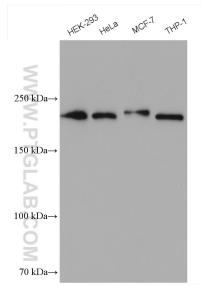
For technical support and original validation data for this product please contact:

T: 1 (888) 4PTGLAB (1-888-478-4522) (toll free in USA), or 1(312) 455-8498 (outside USA)

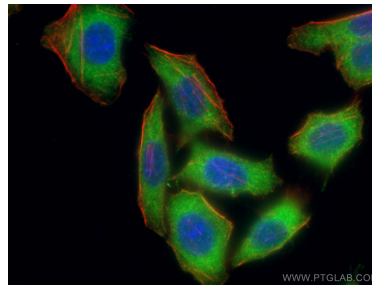
E: proteintech@ptglab.com
W: ptglab.com

This product is exclusively available under Proteintech Group brand and is not available to purchase from any other manufacturer.

Ausgewählte Validierungsdaten



Various lysates were subjected to SDS PAGE followed by western blot with 19743-1-AP (SLK antibody) at dilution of 1:1500 incubated at room temperature for 1.5 hours.



Immunofluorescent analysis of (-20°C Ethanol) fixed HepG2 cells using 19743-1-AP (SLK antibody), at dilution of 1:200 and CoraLite® 488-Conjugated AffiniPure Goat Anti-Rabbit IgG(H+L).