

Nur für Forschungszwecke

# WASF4-Specific Polyklonaler Antikörper

Katalog-Nr.:19755-1-AP



## Allgemeine Informationen

|  |  |   |
|--|--|---|
| <b>Katalog-Nr.:</b><br>19755-1-AP                            | <b>GenBank-Zugangsnummer:</b><br>Q8IV90                    | <b>Reinigungsmethode:</b><br>Antigen-Affinitätsreinigung            |
| <b>Größe:</b><br>150ul , Konzentration: 1400 µg/ml von644739 | <b>GeneID (NCBI):</b><br>644739                            | <b>Empfohlene Verdünnungen:</b><br>WB 1:500-1:2400<br>IF 1:10-1:100 |
| <b>Nanodrop;</b>   | <b>Vollständiger Name:</b><br>WAS protein family, member 4 |   |
| <b>Wirt:</b><br>Kaninchen                                    | <b>Berechnete Masse:</b><br>68 kDa                         |   |
| <b>Isotyp:</b><br>IgG  | <b>Beobachtete Masse:</b><br>68 kDa                        |   |

## Anwendungen

|  |  |
|--|--|
| <b>Geprüfte Anwendungen:</b><br>IF, WB,ELISA | <b>Positivkontrollen:</b><br>WB : Maushingewebe,<br>IF : HepG2-Zellen, |
| <b>Getestete Reaktivität:</b><br>Human, Maus |  |

## Hintergrundinformationen

WASF4, also named as SCAR2, belongs to the SCAR/WAVE family. WASF4 is a downstream effector molecule which involved in the transmission of signals from tyrosine kinase receptors and small GTPases to the actin cytoskeleton. The antibody is specific to WASF4.

## Lagerung

**Lagerungsbedingungen:**  
Bei -20°C lagern. Nach dem Versand ein Jahr lang stabil  
**Lagerungspuffer:**  
PBS mit 0.02% Natriumazid und 50% Glycerin pH 7.3.  
**Aliquotieren ist nicht notwendig bei -20°C Lagerung**

**\*\*\* 20ul-Größen enthalten 0.1% BSA**

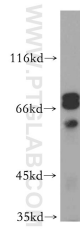
For technical support and original validation data for this product please contact:

T: 1 (888) 4PTGLAB (1-888-478-4522) (toll free in USA), or 1(312) 455-8498 (outside USA)

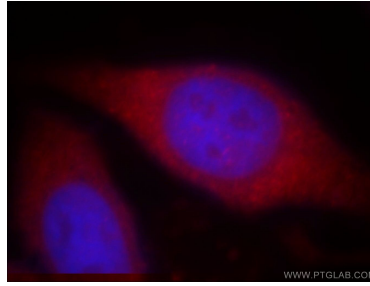
E: proteintech@ptglab.com  
W: ptglab.com

**This product is exclusively available under Proteintech Group brand and is not available to purchase from any other manufacturer.**

## Ausgewählte Validierungsdaten



mouse brain tissue were subjected to SDS PAGE followed by western blot with 19755-1-AP (WASF4-Specific antibody) at dilution of 1:300 incubated at room temperature for 1.5 hours.



Immunofluorescent analysis of HepG2 cells, using WASF4 antibody 19755-1-AP at 1:25 dilution and Rhodamine-labeled goat anti-rabbit IgG (red). Blue pseudocolor = DAPI (fluorescent DNA dye).