

Nur für Forschungszwecke

GPR50 Polyklonaler Antikörper

Katalog-Nr.:19762-1-AP

Vorgestelltes Produkt

5 Publikationen



Allgemeine Informationen

Katalog-Nr.:

19762-1-AP

Größe:

150ul, Konzentration: 1000 µg/ml von 9248

Nanodrop und 333 µg/ml durch die Bradford-Methode mit BSA als Standard;

Wirt:

Kaninchen

Isotyp:

IgG

GenBank-Zugangsnummer:

NM_004224

GeneID (NCBI):

Vollständiger Name:

G protein-coupled receptor 50

Berechnete Masse:

67 kDa

Reinigungsmethode:

Antigen-Affinitätsreinigung

Empfohlene Verdünnungen:

IHC 1:20-1:200

IF 1:50-1:500

Anwendungen

Geprüfte Anwendungen:

FC, IF, IHC, ELISA

In Publikationen genannte Anwendungen:

IF, IP, WB

Getestete Reaktivität:

Human, Maus

Zitierte Arten:

Human, Maus

Hinweis-IHC: Antigendmaskierung mit TE-Puffer pH 9,0 empfohlen. (*) Wahlweise kann die Antigendmaskierung auch mit Citratpuffer pH 6,0 erfolgen.

Positivkontrollen:

IHC : Maushirngewebe,

IF : Maushirngewebe, SH-SY5Y-Zellen

Hintergrundinformationen

GPR50, also known as Melatonin-related receptor or H9, is a member of the G-protein coupled receptor 1 family. It is closely related to the G protein-coupled melatonin receptor family and has been demonstrated as the mammalian ortholog of Mel1c receptor (PMID: 8647286; 18400093). GPR50 does not bind melatonin. It is able to heterodimerize with both the MT1 (Mel1a) and MT2 (Mel1b) melatonin receptor subtypes. While GPR50 has no effect on MT2 function, GPR50 prevented MT1 from both binding melatonin and coupling to G proteins. GPR50 is involved in neuroendocrine function and plays a role in the regulation of energy metabolism (PMID: 8647286; 17957037).

Bemerkenswerte Veröffentlichungen

| Verfasser | Pubmed ID | Journal | Anwendung |
|-----------------|-----------|-------------------|-----------|
| Danli Lu | 36181629 | Transl Stroke Res | WB,IP |
| Boris Simonetti | 31576058 | Nat Cell Biol | WB |
| Zhenyu Yao | 36333974 | FEBS Open Bio | WB |

Lagerung

Lagerungsbedingungen:

Bei -20°C lagern. Nach dem Versand ein Jahr lang stabil

Lagerungspuffer:

PBS mit 0.02% Natriumazid und 50% Glycerin pH 7.3.

Aliquotieren ist nicht notwendig bei -20°C Lagerung

*** 20ul-Größen enthalten 0.1% BSA

For technical support and original validation data for this product please contact:

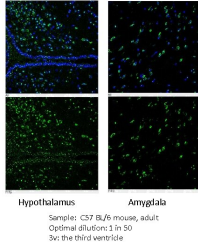
T: 1 (888) 4PTGLAB (1-888-478-4522) (toll free in USA), or 1(312) 455-8498 (outside USA)

E: proteintech@ptglab.com
W: ptglab.com

This product is exclusively available under Proteintech Group brand and is not available to purchase from any other manufacturer.

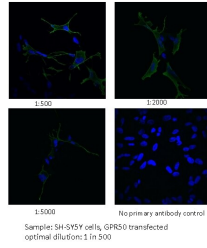
Ausgewählte Validierungsdaten

Immunohistochemistry

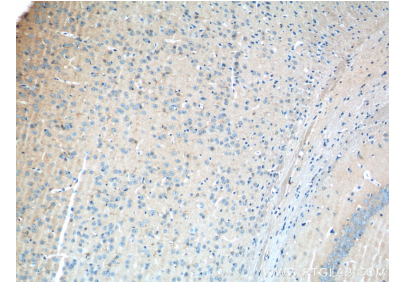


IF result of anti-GPR50 (19762-1-AP, 1:50) with mouse brain tissue slide by Dr. Qian Li, University of Edinburgh.

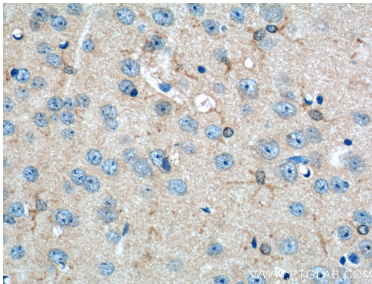
Immunocytochemistry



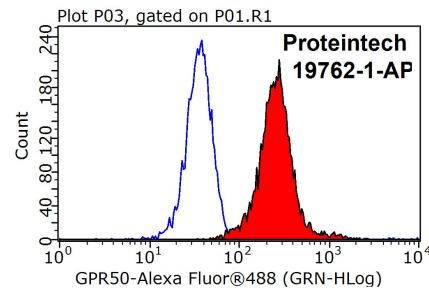
IF result of anti-GPR50 (19762-1-AP, 1:500) with SH-SY5Y cells transfected with GPR50 by Dr. Qian Li, University of Edinburgh.



Immunohistochemical analysis of paraffin-embedded mouse brain tissue slide using 19762-1-AP (GPR50 Antibody) at dilution of 1:50 (under 10x lens).



Immunohistochemical analysis of paraffin-embedded mouse brain tissue slide using 19762-1-AP (GPR50 Antibody) at dilution of 1:50 (under 40x lens).



1x10⁶ K-562 cells were stained with 0.2ug GPR50 antibody (19762-1-AP, red) and control antibody (blue). Fixed with 90% MeOH blocked with 3% BSA (30 min). Alexa Fluor 488-conjugated AffiniPure Goat Anti-Rabbit IgG(H+L) with dilution 1:1000.