

Nur für Forschungszwecke

# ADRA1A-Specific Polyklonaler Antikörper



Katalog-Nr.: 19777-1-AP

Vorgestelltes Produkt

4 Publikationen

## Allgemeine Informationen

<b>Katalog-Nr.:</b> 19777-1-AP	<b>GenBank-Zugangsnummer:</b> NM_000680	<b>Reinigungsmethode:</b> Antigen-Affinitätsreinigung
<b>Größe:</b> 150ul, Konzentration: 260 µg/ml von Nanodrop und 207 µg/ml durch die Bradford-Methode mit BSA als Standard;	<b>GeneID (NCBI):</b> 148	<b>Empfohlene Verdünnungen:</b> WB 1:500-1:2000
<b>Wirt:</b> Kaninchen	<b>Vollständiger Name:</b> adrenergic, alpha-1A-, receptor	
<b>Isotyp:</b> IgG	<b>Berechnete Masse:</b> 51 kDa	
	<b>Beobachtete Masse:</b> 52 kDa	

## Anwendungen

<b>Geprüfte Anwendungen:</b> FC, WB, ELISA	<b>Positivkontrollen:</b> WB: Mausherzgewebe, HeLa-Zellen, Maushirngewebe
<b>In Publikationen genannte Anwendungen:</b> IF, IHC, WB	
<b>Getestete Reaktivität:</b> Human, Maus, Ratte	
<b>Zitierte Arten:</b> Human, Maus, Ratte	

## Hintergrundinformationen

ADRA1A, also named as ADRA1C, belongs to the G-protein coupled receptor 1 family. ADRA1A mediates its action by association with G proteins that activate a phosphatidylinositol-calcium second messenger system. Its effect is mediated by G(q) and G(11) proteins. The antibody is specific to ADRA1A.

## Bemerkenswerte Veröffentlichungen

Verfasser	Pubmed ID	Journal	Anwendung
Miles Frost	32971843	Pharmaceuticals (Basel)	IHC, IF
Jun-Jie Wang	26545627	Vascul Pharmacol	WB
Miaomiao Zhu	35252820	iScience	WB

## Lagerung

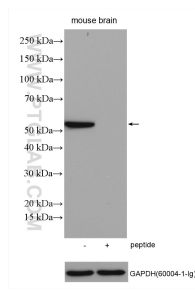
**Lagerungsbedingungen:**  
Bei -20°C lagern. Nach dem Versand ein Jahr lang stabil  
**Lagerungspuffer:**  
PBS mit 0.02% Natriumazid und 50% Glycerin pH 7.3.  
Aliquotieren ist nicht notwendig bei -20°C Lagerung

\*\*\* 20ul-Größen enthalten 0.1% BSA

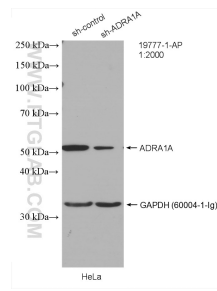
For technical support and original validation data for this product please contact:  
T: 1 (888) 4PTGLAB (1-888-478-4522) (toll free in USA), or 1(312) 455-8498 (outside USA)  
E: proteintech@ptglab.com  
W: ptglab.com

This product is exclusively available under Proteintech Group brand and is not available to purchase from any other manufacturer.

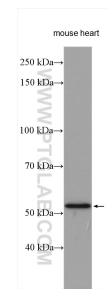
## Ausgewählte Validierungsdaten



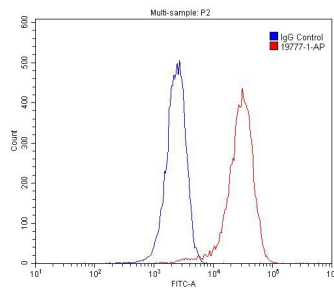
mouse brain tissue lysates were subjected to SDS PAGE followed by western blot with 19777-1-AP (ADRA1A-Specific antibody) at dilution of 1:1000 incubated at room temperature for 1.5 hours without or with blocking peptide (1.4 ug peptide was used to block the binding of 1.0 ug antibody).



WB result of ADRA1A-Specific antibody (19777-1-AP; 1:2000; incubated at room temperature for 1.5 hours) with sh-Control and sh-ADRA1A-Specific transfected HeLa cells.



mouse heart tissue were subjected to SDS PAGE followed by western blot with 19777-1-AP (ADRA1A-Specific antibody) at dilution of 1:1000 incubated at room temperature for 1.5 hours.



1X10<sup>6</sup> HepG2 cells were stained with 0.2ug ADRA1A-Specific antibody (19777-1-AP, red) and control antibody (blue). Fixed with 4% PFA blocked with 3% BSA (30 min). Alexa Fluor 488-conjugated AffiniPure Goat Anti-Rabbit IgG(H+L) with dilution 1:1500.