

Nur für Forschungszwecke

Collagen Type VII Polyklonaler Antikörper

Katalog-Nr.:19799-1-AP



Allgemeine Informationen

Katalog-Nr.: 19799-1-AP	GenBank-Zugangsnummer: NM_000094	Reinigungsmethode: Antigen-Affinitätsreinigung
Größe: 150ul , Konzentration: 400 µg/ml von Nanodrop und 300 µg/ml durch die Bradford-Methode mit BSA als Standard;	GeneID (NCBI): 1294	Empfohlene Verdünnungen: WB 1:500-1:1000
Wirt: Kaninchen	Vollständiger Name: collagen, type VII, alpha 1	
Isotyp: IgG	Berechnete Masse: 295 kDa	
	Beobachtete Masse: 290 kDa	

Anwendungen

Geprüfte Anwendungen: WB,ELISA	Positivkontrollen: WB : HeLa-Zellen,
Getestete Reaktivität: Human	

Hintergrundinformationen

COL7A1, also named as LC collagen, is a stratified squamous epithelial basement membrane protein that forms anchoring fibrils which may contribute to epithelial basement membrane organization and adherence by interacting with extracellular matrix (ECM) proteins such as type IV collagen. Defects in COL7A1 are the cause of epidermolysis bullosa dystrophica (DEB). Defects in COL7A1 are the cause of epidermolysis bullosa dystrophica Pasini type (P-DEB) which also known as albopapuloid dominant dystrophic epidermolysis bullosa. Defects in COL7A1 are the cause of epidermolysis bullosa dystrophica Hallopeau-Siemens type (HS-DEB). Defects in COL7A1 are the cause of transient bullous dermolysis of the newborn (TBDN). Defects in COL7A1 are the cause of epidermolysis bullosa dystrophica pretibial type (PR-DEB). Defects in COL7A1 are the cause of epidermolysis bullosa dystrophica Bart type (B-DEB). Defects in COL7A1 are the cause of epidermolysis bullosa pruriginosa (EBP). Defects in COL7A1 are the cause of isolated toenail dystrophy without skin fragility. Defects in COL7A1 are the cause of epidermolysis bullosa dystrophica with subcorneal cleavage (EBDSC) which also known as epidermolysis bullosa simplex superficialis (EBSS). This antibody is specific to COL7A1.

Lagerung

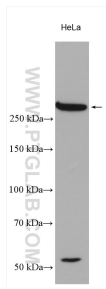
Lagerungsbedingungen:
Bei -20°C lagern. Nach dem Versand ein Jahr lang stabil
Lagerungspuffer:
PBS mit 0.02% Natriumazid und 50% Glycerin pH 7.3.
Aliquotieren ist nicht notwendig bei -20°C Lagerung

***** 20ul-Größen enthalten 0.1% BSA**

For technical support and original validation data for this product please contact:
T: 1 (888) 4PTGLAB (1-888-478-4522) (toll free in USA), or 1(312) 455-8498 (outside USA)
E: proteintech@ptglab.com
W: ptglab.com

This product is exclusively available under Proteintech Group brand and is not available to purchase from any other manufacturer.

Ausgewählte Validierungsdaten



HeLa cells were subjected to SDS PAGE followed by western blot with 19799-1-AP (Collagen Type VII antibody) at dilution of 1:600 incubated at room temperature for 1.5 hours.