

Nur für Forschungszwecke

PCM1 Polyklonaler Antikörper

Katalog-Nr.:19856-1-AP

Vorgestelltes Produkt

18 Publikationen



Allgemeine Informationen

Katalog-Nr.: 19856-1-AP	GenBank-Zugangsnummer: BC000453	Reinigungsmethode: Antigen-Affinitätsreinigung
Größe: 150ul, Konzentration: 1000 µg/ml von 5108 Nanodrop;	GeneID (NCBI): pericentriolar material 1	Empfohlene Verdünnungen: WB 1:2000-1:16000 IP 0.5-4.0 µg für IP und 1:500-1:1000 für WB
Wirt: Kaninchen	Vollständiger Name: pericentriolar material 1	IHC 1:50-1:500 IF 1:50-1:500
Isotyp: IgG	Berechnete Masse: 2024 aa, 228 kDa	
Immunogen Katalognummer: AG13929	Beobachtete Masse: 260-280 kDa	

Anwendungen

Geprüfte Anwendungen: FC, IF, IHC, IP, WB, ELISA	Positivkontrollen: WB: HEK-293-Zellen, HeLa-Zellen, HT-1080.Zellen, NIH/3T3-Zellen IP: HeLa-Zellen, IHC: humanes Tonsillitissgewebe, Maushodengewebe IF: HepG2-Zellen, HeLa-Zellen, NIH/3T3-Zellen
In Publikationen genannte Anwendungen: IF, IHC, IP, WB	
Getestete Reaktivität: Human, Maus	
Zitierte Arten: Human, Maus	

Hinweis-IHC: Antigenmaskierung mit TE-Puffer pH 9,0 empfohlen. (*) Wahlweise kann die Antigenmaskierung auch mit Citratpuffer pH 6,0 erfolgen.

Hintergrundinformationen

Pericentriolar material 1 (PCM1) is a component of centriolar satellites, which are electron dense granules scattered around centrosomes (PMID: 10579718). PCM1 is required for centrosome assembly and function. It acts as a scaffold to target several proteins to the centrosome in a dynein motor-dependent manner and regulate microtubular dynamics (PMID:18762586; 12403812). It is also involved in the biogenesis of cilia (PMID: 18772192). Chromosomal aberrations involving PCM1 gene are associated with papillary thyroid carcinomas and a variety of hematological malignancies, including atypical chronic myeloid leukemia and T-cell lymphoma. (PMID: 10980597; 16091753; 15805263; 16424865).

Bemerkenswerte Veröffentlichungen

Verfasser	Pubmed ID	Journal	Anwendung
Hsuan Cheng	36314725	EMBO Rep	IF
Deniz Conkar	31582766	Sci Rep	WB
Tianyu Wu	36395215	Science	IF

Lagerung

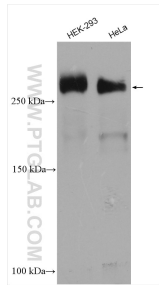
Lagerungsbedingungen:
Bei -20°C lagern. Nach dem Versand ein Jahr lang stabil
Lagerungspuffer:
PBS mit 0.02% Natriumazid und 50% Glycerin pH 7.3.
Aliquotieren ist nicht notwendig bei -20°C Lagerung

*** 20ul-Größen enthalten 0.1% BSA

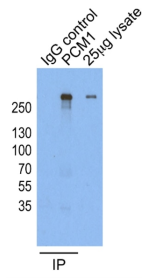
For technical support and original validation data for this product please contact:
T: 1 (888) 4PTGLAB (1-888-478-4522) (toll free in USA), or 1(312) 455-8498 (outside USA)
E: proteintech@ptglab.com
W: ptglab.com

This product is exclusively available under Proteintech Group brand and is not available to purchase from any other manufacturer.

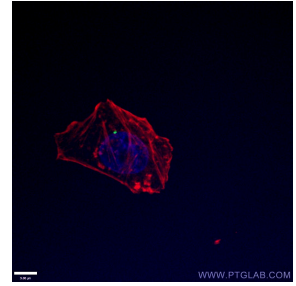
Ausgewählte Validierungsdaten



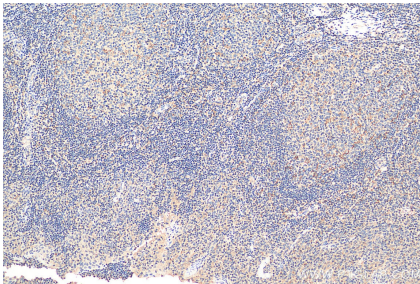
Various lysates were subjected to SDS PAGE followed by western blot with 19856-1-AP (PCM1 antibody) at dilution of 1:8000 incubated at room temperature for 1.5 hours.



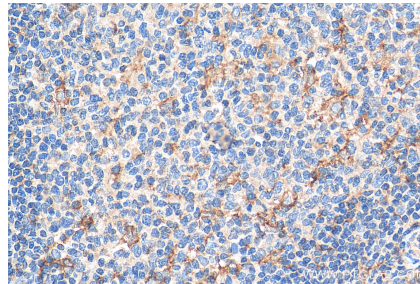
IP result of anti-PCM1 (19856-1-AP for IP and Detection) with HeLa cells.



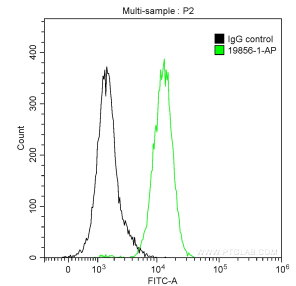
Immunofluorescent analysis of (4% PFA) fixed HepG2 cells using 19856-1-AP (PCM1 antibody) at dilution of 1:100 and CoraLite488-Conjugated AffiniPure Goat Anti-Rabbit IgG(H+L).



Immunohistochemical analysis of paraffin-embedded human tonsillitis tissue slide using 19856-1-AP (PCM1 antibody) at dilution of 1:200 (under 10x lens). Heat mediated antigen retrieval with Tris-EDTA buffer (pH 9.0).



Immunohistochemical analysis of paraffin-embedded human tonsillitis tissue slide using 19856-1-AP (PCM1 antibody) at dilution of 1:200 (under 40x lens). Heat mediated antigen retrieval with Tris-EDTA buffer (pH 9.0).



1×10^6 HepG2 cells were intracellularly stained with 0.2 μ g Anti-Human PCM1 (19856-1-AP) and CoraLite[®]488-Conjugated AffiniPure Goat Anti-Rabbit IgG(H+L) at dilution 1:1000 (green), or 0.2 μ g Control Antibody (black). Cells were fixed with 90% MeOH.