

Allgemeine Informationen

Katalog-Nr.:
19885-1-AP

Größe:
150ul , Konzentration: 450 µg/ml von
Nanodrop und 280 µg/ml durch die
Bradford-Methode mit BSA als
Standard;

Wirt:
Kaninchen

Isotyp:
IgG

Immunogen Katalognummer:
AG13703

GenBank-Zugangsnummer:
BC028599

GeneID (NCBI):
26060

Vollständiger Name:
adaptor protein, phosphotyrosine
interaction, PH domain and leucine
zipper containing 1

Berechnete Masse:
709 aa, 80 kDa

Beobachtete Masse:
80 kDa

Reinigungsmethode:

Antigen-Affinitätsreinigung

Empfohlene Verdünnungen:

WB 1:1000-1:4000

IP 0.5-4.0 µg für IP und 1:500-1:2000

für WB

IHC 1:20-1:200

IF 1:10-1:100

Anwendungen

Geprüfte Anwendungen:

IF, IHC, IP, WB, ELISA

Getestete Reaktivität:

Human, Maus, Ratte

Hinweis-IHC: Antigenmaskierung mit TE-Puffer pH 9,0 empfohlen. (*) Wahlweise kann die Antigenmaskierung auch mit Citratpuffer pH 6,0 erfolgen.

Positivkontrollen:

WB: humanes Hirngewebe, HEK-293-Zellen, HeLa-Zellen, HT-1080.Zellen, humanes Herzgewebe, Maushirngewebe

IP: Maushirngewebe,

IHC: humanes Mammakarzinomgewebe,

IF: HepG2-Zellen,

Hintergrundinformationen

Adaptor protein, phosphotyrosine interaction, PH domain and leucine zipper containing 1 (APPL1), a binding partner of Akt2 and an important regulator of ins signaling, plays a key role in the regulation of ins secretion [PMID:22615370]. APPL1 interacts with adiponectin receptors and mediates the ins-sensitizing effects of adiponectin in muscle and endothelial cells. It also participates in nuclear signaling and transcriptional regulation, mostly by modulating the activity of various nuclear factors [PMID:22685329]. Apart from its role in endocytosis and endosomal transport, APPL1 was reported to undergo nucleocytoplasmic shuttling and participate in transcriptional regulation, e.g. by interactions with histone deacetylases (HDACs) [PMID:19686092].

Lagerung

Lagerungsbedingungen:

Bei -20°C lagern. Nach dem Versand ein Jahr lang stabil

Lagerungspuffer:

PBS mit 0.02% Natriumazid und 50% Glycerin pH 7.3.

Aliquotieren ist nicht notwendig bei -20°C Lagerung

*** 20ul-Größen enthalten 0.1% BSA

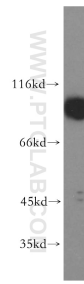
For technical support and original validation data for this product please contact:

T: 1 (888) 4PTGLAB (1-888-478-4522) (toll free
in USA), or 1(312) 455-8498 (outside USA)

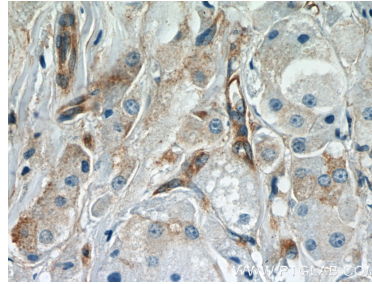
E: proteintech@ptglab.com
W: ptglab.com

This product is exclusively available under Proteintech Group brand and is not available to purchase from any other manufacturer.

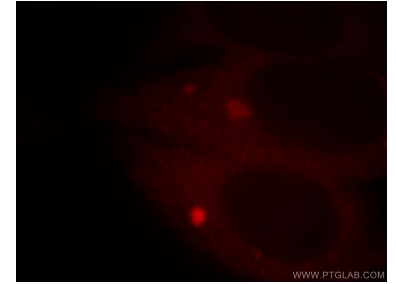
Ausgewählte Validierungsdaten



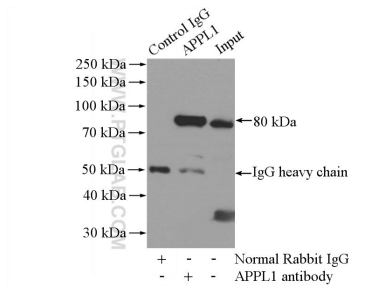
human brain tissue were subjected to SDS PAGE followed by western blot with 19885-1-AP (APPL1 antibody) at dilution of 1:500 incubated at room temperature for 1.5 hours.



Immunohistochemical analysis of paraffin-embedded human breast cancer slide using 19885-1-AP (APPL1 Antibody) at dilution of 1:50.



Immunofluorescent analysis of HepG2 cells, using APPL1 antibody 19885-1-AP at 1:25 dilution and Rhodamine-labeled goat anti-rabbit IgG (red).



IP Result of anti-APPL1 (IP:19885-1-AP, 4ug; Detection:19885-1-AP 1:1000) with mouse brain tissue lysate 2640ug.