

Nur für Forschungszwecke

NF90/ILF3 Polyklonaler Antikörper

Katalog-Nr.:19887-1-AP

Vorgestelltes Produkt

23 Publikationen



Allgemeine Informationen

Katalog-Nr.: 19887-1-AP	GenBank-Zugangsnummer: BC064836	Reinigungsmethode: Antigen-Affinitätsreinigung
Größe: 150ul, Konzentration: 500 µg/ml von Nanodrop;	GeneID (NCBI): 3609	Empfohlene Verdünnungen: WB 1:2000-1:16000 IP 0.5-4.0 ug für IP und 1:500-1:2000 für WB
Wirt: Kaninchen	Vollständiger Name: interleukin enhancer binding factor 3, 90kDa	IHC 1:20-1:200 IF 1:10-1:100
Isotyp: IgG	Berechnete Masse: 894 aa, 95 kDa	
Immunogen Katalognummer: AG13707	Beobachtete Masse: 90 kDa, 110 kDa	

Anwendungen

Geprüfte Anwendungen:

IF, IHC, IP, WB, ELISA

In Publikationen genannte Anwendungen:

CoIP, IHC, RIP, WB

Getestete Reaktivität:

Human, Maus, Ratte

Zitierte Arten:

Human, Maus, Ratte

Positivkontrollen:

WB : HeLa-Zellen, Jurkat-Zellen, K-562-Zellen, Mausmilzgewebe, Raji-Zellen

IP : HeLa-Zellen,

IHC : humanes Zervixkarzinomgewebe, humanes Plazenta-Gewebe

IF : HeLa-Zellen,

Hinweis-IHC: Antigenmaskierung mit TE-Puffer pH 9,0 empfohlen. (*) Wahlweise kann die Antigenmaskierung auch mit Citratpuffer pH 6,0 erfolgen.

Hintergrundinformationen

Nuclear factor of activated T cells (NFAT) is a transcription factor required for T-cell expression of interleukin-2 (IL2). NFAT binds to a sequence known as the antigen receptor response element-2 (ARRE2) in the IL2 enhancer. NFAT contains two subunits, one is ILF3. ILF3 can facilitate double-stranded RNA-regulated gene expression at the level of post-transcription. It binds to and inhibits coding sequences of acid beta-glucosidase and other mRNAs and functions at the initiation phase of GCse mRNA translation, probably by inhibiting its binding to polysomes. ILF3 exists in two isoforms NFAR-1 (90 kDa) and -2 (110 kDa). NFAR-1 and -2 each contain two DRBDs in their C-terminus regions and exhibit 98% homology to one another at the amino acid level. NFAR-2 contains an extra 192 amino acids at the C-terminal region that are encoded by an extra three exons present in its corresponding transcript.

Bemerkenswerte Veröffentlichungen

Verfasser	Pubmed ID	Journal	Anwendung
Ling-Fei Zhang	26346275	EMBO J	WB
Neeraja Purandare	36339251	iScience	WB
Subhayan Sur	33043604	EMBO Rep	WB,RIP

Lagerung

Lagerungsbedingungen:

Bei -20°C lagern. Nach dem Versand ein Jahr lang stabil

Lagerungspuffer:

PBS mit 0.02% Natriumazid und 50% Glycerin pH 7.3.

Aliquotieren ist nicht notwendig bei -20°C Lagerung

*** 20ul-Größen enthalten 0.1% BSA

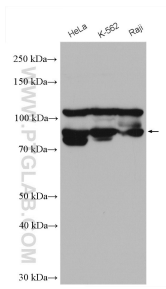
For technical support and original validation data for this product please contact:

T: 1 (888) 4PTGLAB (1-888-478-4522) (toll free in USA), or 1(312) 455-8498 (outside USA)

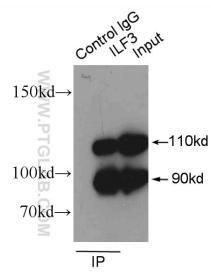
E: proteintech@ptglab.com
W: ptglab.com

This product is exclusively available under Proteintech Group brand and is not available to purchase from any other manufacturer.

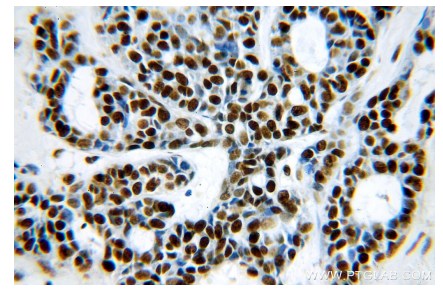
Ausgewählte Validierungsdaten



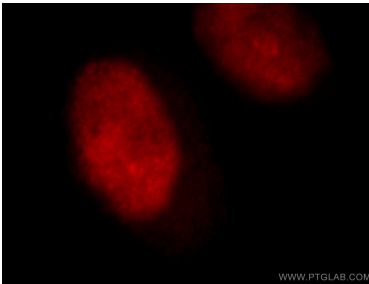
Various lysates were subjected to SDS PAGE followed by western blot with 19887-1-AP (ILF3 antibody) at dilution of 1:8000 incubated at room temperature for 1.5 hours.



IP Result of anti-ILF3 (IP:19887-1-AP, 3ug; Detection:19887-1-AP 1:1000) with HeLa cells lysate 1600ug.



Immunohistochemical analysis of paraffin-embedded human cervical cancer using 19887-1-AP (ILF3 antibody) at dilution of 1:100 (under 40x lens).



Immunofluorescent analysis of HeLa cells, using ILF3 antibody 19887-1-AP at 1:25 dilution and Rhodamine-labeled goat anti-rabbit IgG (red).