

Nur für Forschungszwecke

# TMEM38B Polyklonaler Antikörper

Katalog-Nr.:19919-1-AP

Vorgestelltes Produkt



## Allgemeine Informationen

<b>Katalog-Nr.:</b> 19919-1-AP	<b>GenBank-Zugangsnummer:</b> BC000049	<b>Reinigungsmethode:</b> Antigen-Affinitätsreinigung
<b>Größe:</b> 150ul , Konzentration: 1000 µg/ml von55151 Nanodrop und 380 µg/ml durch die Bradford-Methode mit BSA als Standard;	<b>GeneID (NCBI):</b> Vollständiger Name: transmembrane protein 38B	<b>Empfohlene Verdünnungen:</b> WB 1:500-1:1000 IHC 1:50-1:500 IF 1:10-1:100
<b>Wirt:</b> Kaninchen	<b>Berechnete Masse:</b> 291 aa, 33 kDa	
<b>Isotyp:</b> IgG	<b>Beobachtete Masse:</b> 28-33 kDa	
<b>Immunogen Katalognummer:</b> AG13835		

## Anwendungen

<b>Geprüfte Anwendungen:</b> IF, IHC, WB, ELISA	<b>Positivkontrollen:</b> WB : HeLa-Zellen, MCF-7-Zellen IHC : Maushodengewebe, humanes Nierengewebe IF : HeLa-Zellen,
<b>Getestete Reaktivität:</b> Human, Maus	
<b>Hinweis-IHC: Antigenmaskierung mit TE-Puffer pH 9,0 empfohlen. (*) Wahlweise kann die Antigenmaskierung auch mit Citratpuffer pH 6,0 erfolgen.</b>	

## Hintergrundinformationen

TMEM38B, also named as Trimeric intracellular cation channel type B, is a 291 amino acid protein, which belongs to the TMEM38 family. TMEM38B localizes in the endoplasmic reticulum and may act as a potassium counter-ion channel that functions in synchronization with calcium release from intracellular stores. TMEM38B has an association with Osteogenesis imperfecta 14.

## Lagerung

**Lagerungsbedingungen:**  
Bei -20°C lagern. Nach dem Versand ein Jahr lang stabil  
**Lagerungspuffer:**  
PBS mit 0.02% Natriumazid und 50% Glycerin pH 7.3.  
**Aliquotieren ist nicht notwendig bei -20°C Lagerung**

\*\*\* 20ul-Größen enthalten 0.1% BSA

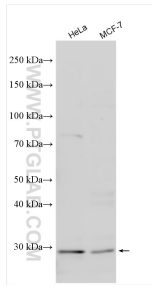
For technical support and original validation data for this product please contact:

T: 1 (888) 4PTGLAB (1-888-478-4522) (toll free in USA), or 1(312) 455-8498 (outside USA)

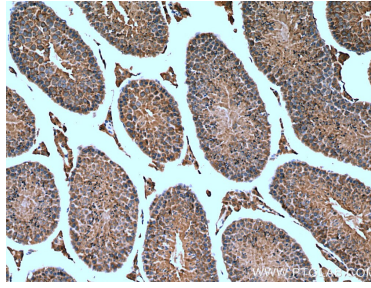
E: proteintech@ptglab.com  
W: ptglab.com

This product is exclusively available under Proteintech Group brand and is not available to purchase from any other manufacturer.

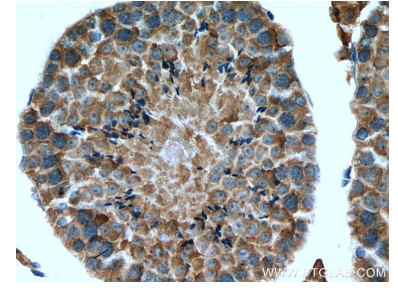
## Ausgewählte Validierungsdaten



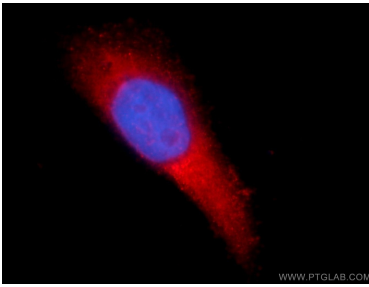
Various lysates were subjected to SDS PAGE followed by western blot with 19919-1-AP (TMEM38B antibody) at dilution of 1:600 incubated at room temperature for 1.5 hours.



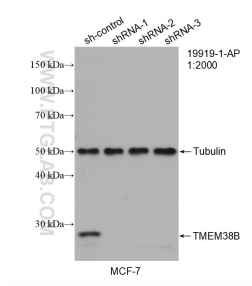
Immunohistochemical analysis of paraffin-embedded mouse testis tissue slide using 19919-1-AP (TMEM38B antibody) at dilution of 1:100 (under 10x lens). Heat mediated antigen retrieval with Tris-EDTA buffer (pH 9.0).



Immunohistochemical analysis of paraffin-embedded mouse testis tissue slide using 19919-1-AP (TMEM38B antibody) at dilution of 1:100 (under 40x lens). Heat mediated antigen retrieval with Tris-EDTA buffer (pH 9.0).



Immunofluorescent analysis of HeLa cells using 19919-1-AP (TMEM38B antibody) at dilution of 1:25 and Alexa Fluor 594-conjugated AffiniPure Goat Anti-Rabbit IgG(H+L).



WB result of TMEM38B antibody (19919-1-AP; 1:2000; incubated at room temperature for 1.5 hours) with sh-Control and sh-TMEM38B transfected MCF-7 cells.