

Nur für Forschungszwecke

CYP1A2-Specific Polyklonaler Antikörper



Katalog-Nr.:19936-1-AP

27 Publikationen

Allgemeine Informationen

Katalog-Nr.:
19936-1-AP

Größe:
150ul, Konzentration: 500 µg/ml von Nanodrop und 280 µg/ml durch die Bradford-Methode mit BSA als Standard;

Wirt:
Kaninchen

Isotyp:
IgG

GenBank-Zugangsnummer:
NM_000761

GeneID (NCBI):
1544

Vollständiger Name:
cytochrome P450, family 1, subfamily A, polypeptide 2

Berechnete Masse:
58 kDa

Beobachtete Masse:
58 kDa

Reinigungsmethode:
Antigen-Affinitätsreinigung

Empfohlene Verdünnungen:
WB 1:500-1:2000
IP 0.5-4.0 µg für IP und 1:200-1:1000 für WB
IHC 1:100-1:400
IF 1:10-1:100

Anwendungen

Geprüfte Anwendungen:
FC, IF, IHC, IP, WB, ELISA

In Publikationen genannte Anwendungen:
IF, WB

Getestete Reaktivität:
Human, Maus, Ratte

Zitierte Arten:
Human, Maus, Ratte

Hinweis-IHC: Antigenmaskierung mit TE-Puffer pH 9,0 empfohlen. (*) Wahlweise kann die Antigenmaskierung auch mit Citratpuffer pH 6,0 erfolgen.

Positivkontrollen:

WB : Mauslebergewebe,

IP : Mauslebergewebe,

IHC : humanes Lebergewebe,

IF : HeLa-Zellen,

Hintergrundinformationen

CYP1A2, also named as CP12; P3-450 and P450(PA), belongs to the cytochrome P450 family. Cytochromes P450 are a group of heme-thiolate monooxygenases. In liver microsomes, CYP1A2 is involved in an NADPH-dependent electron transport pathway. It oxidizes a variety of structurally unrelated compounds, including steroids, fatty acids, and xenobiotics. Most active of CYP1A2 is in catalyzing 2-hydroxylation. Caffeine is metabolized primarily by cytochrome CYP1A2 in the liver through an initial N3-demethylation. It also acts in the metabolism of aflatoxin B1 and acetaminophen. CYP1A2 participates in the bioactivation of carcinogenic aromatic and heterocyclic amines. It catalyzes the reaction: RH + reduced flavoprotein + O₂ = ROH + oxidized flavoprotein + H₂O. The antibody is specific to CYP1A2.

Bemerkenswerte Veröffentlichungen

Verfasser	Pubmed ID	Journal	Anwendung
Fenja A Schuran	32932016	Cell Mol Gastroenterol Hepatol	IF, WB
Linjie Lv	25203445	Hepatology	IF
Shotaro Uehara	36050438	Sci Rep	WB

Lagerung

Lagerungsbedingungen:

Bei -20°C lagern. Nach dem Versand ein Jahr lang stabil

Lagerungspuffer:

PBS mit 0.02% Natriumazid und 50% Glycerin pH 7.3.

Aliquotieren ist nicht notwendig bei -20°C Lagerung

*** 20ul-Größen enthalten 0.1% BSA

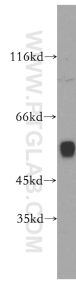
For technical support and original validation data for this product please contact:

T: 1 (888) 4PTGLAB (1-888-478-4522) (toll free in USA), or 1(312) 455-8498 (outside USA)

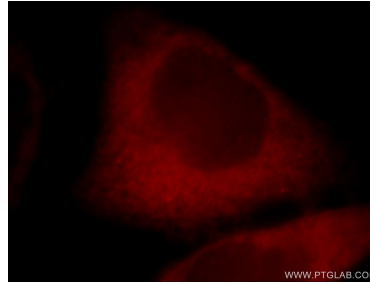
E: proteintech@ptglab.com
W: ptglab.com

This product is exclusively available under Proteintech Group brand and is not available to purchase from any other manufacturer.

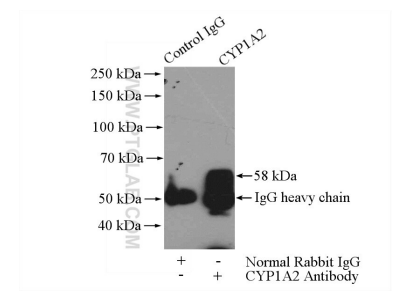
Ausgewählte Validierungsdaten



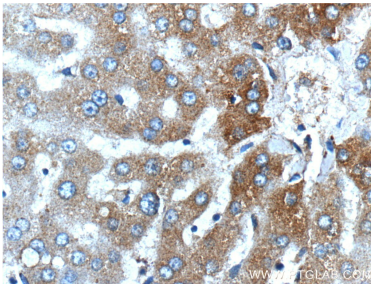
mouse liver tissue were subjected to SDS PAGE followed by western blot with 19936-1-AP (CYP1A2-Specific antibody) at dilution of 1:1000 incubated at room temperature for 1.5 hours.



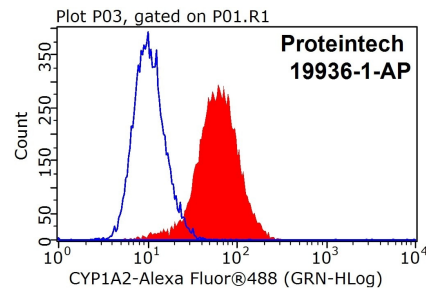
Immunofluorescent analysis of HeLa cells, using CYP1A2 antibody 19936-1-AP at 1:25 dilution and Rhodamine-labeled goat anti-rabbit IgG (red).



IP Result of anti-CYP1A2-Specific (IP:19936-1-AP, 4ug; Detection:19936-1-AP 1:300) with mouse liver tissue lysate 4000ug.



Immunohistochemical analysis of paraffin-embedded human liver tissue slide using 19936-1-AP (CYP1A2-Specific Antibody) at dilution of 1:200 (under 40x lens).



1X10⁶ HeLa cells were stained with .5ug CYP1A2-Specific antibody (19936-1-AP, red) and control antibody (blue). Cells were fixed with 4% PFA and permeabilized with 0.1% Triton X-100. FITC-Goat anti-Rabbit IgG with dilution 1:100.