

Nur für Forschungszwecke

# CYP2E1-Specific Polyklonaler Antikörper



Katalog-Nr.:19937-1-AP

Vorgestelltes Produkt

82 Publikationen

## Allgemeine Informationen

<b>Katalog-Nr.:</b> 19937-1-AP	<b>GenBank-Zugangsnummer:</b> NM_000773	<b>Reinigungsmethode:</b> Antigen-Affinitätsreinigung
<b>Größe:</b> 150ul , Konzentration: 750 µg/ml von Nanodrop;	<b>GeneID (NCBI):</b> 1571	<b>Empfohlene Verdünnungen:</b> WB 1:2000-1:10000 IHC 1:50-1:500 IF 1:50-1:500
<b>Wirt:</b> Kaninchen	<b>Vollständiger Name:</b> cytochrome P450, family 2, subfamily E, polypeptide 1	
<b>Isotyp:</b> IgG	<b>Berechnete Masse:</b> 57 kDa	
	<b>Beobachtete Masse:</b> 50-57 kDa	

## Anwendungen

### Geprüfte Anwendungen:

IF, IHC, WB, ELISA

### In Publikationen genannte Anwendungen:

IF, IHC, WB

### Getestete Reaktivität:

Human, Maus, Ratte

### Zitierte Arten:

Human, Maus, Ratte

**Hinweis-IHC: Antigenmaskierung mit TE-Puffer pH 9,0 empfohlen. (\*) Wahlweise kann die Antigenmaskierung auch mit Citratpuffer pH 6,0 erfolgen.**

### Positivkontrollen:

WB : Mauslebergewebe, Jurkat-Zellen, Rattenlebergewebe

IHC : humanes Leberkarzinomgewebe,

IF : HeLa-Zellen,

## Hintergrundinformationen

CYP2E1, also named as CYP11E1, 4-nitrophenol 2-hydroxylase, P450-J and CYP2E, belongs to the cytochrome P450 family. CYP2E1 metabolizes several precarcinogens, drugs, and solvents to reactive metabolites. It inactivates a number of drugs and xenobiotics and also bioactivates many xenobiotic substrates to their hepatotoxic or carcinogenic forms. CYP2E1 catalyze the reaction: 4-nitrophenol + NADPH + O<sub>2</sub> = 4-nitrocatechol + NADP<sup>+</sup> + H<sub>2</sub>O. CYP2E1 can be detected as 50-57 kDa(full-length) and ~40 kDa(N-terminal signal peptide cleaved) (PMID: 21130154). The antibody is specific to CYP2E1.

## Bemerkenswerte Veröffentlichungen

Verfasser	Pubmed ID	Journal	Anwendung
Xufeng Tao	25083618	Transplantation	WB
Jing Yuan	31543403	Cell Metab	WB
Feixue Liu	36113268	Ecotoxicol Environ Saf	WB

## Lagerung

### Lagerungsbedingungen:

Bei -20°C lagern. Nach dem Versand ein Jahr lang stabil

### Lagerungspuffer:

PBS mit 0.02% Natriumazid und 50% Glycerin pH 7.3.

Aliquotieren ist nicht notwendig bei -20°C Lagerung

\*\*\* 20ul-Größen enthalten 0.1% BSA

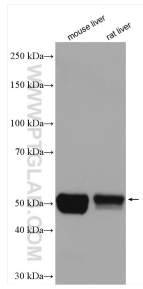
For technical support and original validation data for this product please contact:

T: 1 (888) 4PTGLAB (1-888-478-4522) (toll free in USA), or 1(312) 455-8498 (outside USA)

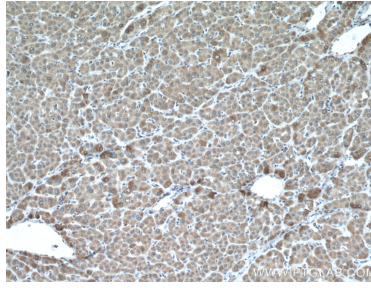
E: proteintech@ptglab.com  
W: ptglab.com

This product is exclusively available under Proteintech Group brand and is not available to purchase from any other manufacturer.

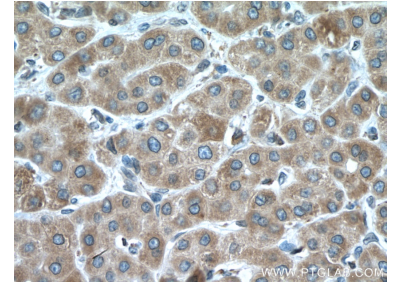
## Ausgewählte Validierungsdaten



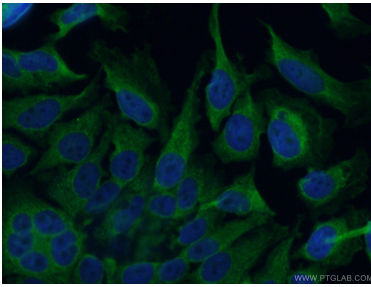
Various lysates were subjected to SDS PAGE followed by western blot with 19937-1-AP (CYP2E1-Specific antibody) at dilution of 1:6000 incubated at room temperature for 1.5 hours.



Immunohistochemical analysis of paraffin-embedded human liver cancer tissue slide using 19937-1-AP (CYP2E1-Specific antibody) at dilution of 1:200 (under 10x lens. Heat mediated antigen retrieval with Tris-EDTA buffer (pH 9.0).



Immunohistochemical analysis of paraffin-embedded human liver cancer tissue slide using 19937-1-AP (CYP2E1-Specific antibody) at dilution of 1:200 (under 40x lens. Heat mediated antigen retrieval with Tris-EDTA buffer (pH 9.0).



Immunofluorescent analysis of (4% PFA) fixed HeLa cells using 19937-1-AP (CYP2E1-Specific antibody) at dilution of 1:50 and Alexa Fluor 488-Conjugated AffiniPure Goat Anti-Rabbit IgG(H+L).