

Allgemeine Informationen

Katalog-Nr.: 19943-1-AP	GenBank-Zugangsnummer: NM_001042599	Reinigungsmethode: Antigen-Affinitätsreinigung
Größe: 150ul, Konzentration: 700 µg/ml von Nanodrop und 333 µg/ml durch die Bradford-Methode mit BSA als Standard;	GeneID (NCBI): 2066	Empfohlene Verdünnungen: WB 1:200-1:1000 IHC 1:20-1:200
Wirt: Kaninchen	Vollständiger Name: v-erb-a erythroblastic leukemia viral oncogene homolog 4 (avian)	
Isotyp: IgG	Berechnete Masse: 147 kDa	
	Beobachtete Masse: 180 kDa, 147 kDa	

Anwendungen

Geprüfte Anwendungen: IHC, WB, ELISA	Positivkontrollen: WB : Maushirngewebe, MCF-7-Zellen, Rattenhirngewebe IHC : humanes Nierengewebe,
In Publikationen genannte Anwendungen: IF, IHC, WB	
Getestete Reaktivität: Human, Maus, Ratte	
Zitierte Arten: Hausschwein, Human, Maus	
Hinweis-IHC: Antigenmaskierung mit TE-Puffer pH 9,0 empfohlen. (*) Wahlweise kann die Antigenmaskierung auch mit Citratpuffer pH 6,0 erfolgen.	

Hintergrundinformationen

ERBB4, also named as p180erbB4 and HER4, belongs to the protein kinase superfamily, Tyr protein kinase family and EGF receptor subfamily. ERBB4 specifically binds and it is activated by neuregulins, NRG-2, NRG-3, heparin-binding EGF-like growth factor, betacellulin and NTAk. Interaction with these factors induces cell differentiation. ERBB4 is not activated by EGF, TGF- α , and amphiregulin. ERBB4 catalyze the reaction: ATP + a [protein]-L-tyrosine = ADP + a [protein]-L-tyrosine phosphate. The antibody recognize the C-term of ERBB4. Alternatively spliced variants which encode different protein isoforms with calculated molecular weight of 144-147 kDa have been described. The apparent molecular weight of full-length ERBB4 is 150-200 kDa due to glycosylation and phosphorylation. Full-length ERBB4 can be cleaved into an 80-kDa ERBB4 intracellular fragment and a 120-kDa extracellular fragment (PMID: 11343971; 16251361).

Bemerkenswerte Veröffentlichungen

Verfasser	Pubmed ID	Journal	Anwendung
Hongbing Li	31556771	Acta Otolaryngol	IHC
Xiao-Pei Yang	27756321	J Neuroinflammation	WB
Shi Liu	33021020	Kaohsiung J Med Sci	WB

Lagerung

Lagerungsbedingungen:
Bei -20°C lagern. Nach dem Versand ein Jahr lang stabil

Lagerungspuffer:
PBS mit 0.02% Natriumazid und 50% Glycerin pH 7.3.

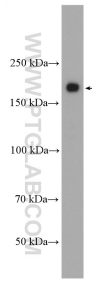
Aliquotieren ist nicht notwendig bei -20°C Lagerung

*** 20ul-Größen enthalten 0.1% BSA

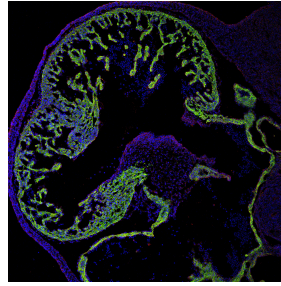
For technical support and original validation data for this product please contact:
 T: 1 (888) 4PTGLAB (1-888-478-4522) (toll free in USA), or 1(312) 455-8498 (outside USA)
 E: proteintech@ptglab.com
 W: ptglab.com

This product is exclusively available under Proteintech Group brand and is not available to purchase from any other manufacturer.

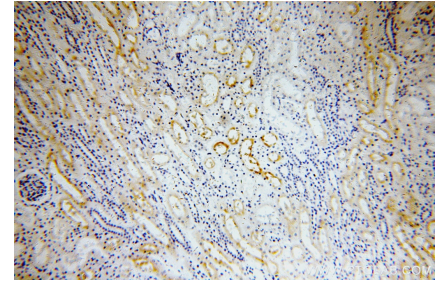
Ausgewählte Validierungsdaten



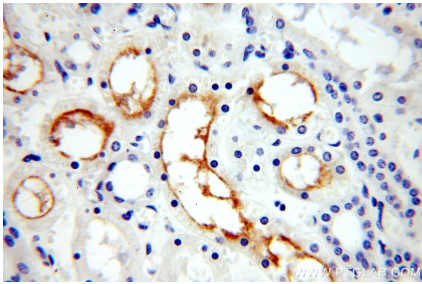
mouse brain tissue were subjected to SDS PAGE followed by western blot with 19943-1-AP (ERBB4 antibody) at dilution of 1:300 incubated at room temperature for 1.5 hours.



Frozen tissue section of embryonic mouse heart (E12.5) was stained for cardiac troponin-T/cTnT (green) and ErbB4 (red, Cat. No 19943-1-AP) with DAPI as a counterstain for visualizing the nucleus (blue). cTnT stains cardiomyocytes and was visualized with an Alexa Fluor 488 secondary antibody. ErbB4 is a key member of ErbB signaling and involved in development and was visualized with an Alexa Fluor 555 secondary antibody. The Image and figure legends are intellectual



Immunohistochemical analysis of paraffin-embedded human kidney using 19943-1-AP (ERBB4 antibody) at dilution of 1:100 (under 10x lens).



Immunohistochemical analysis of paraffin-embedded human kidney using 19943-1-AP (ERBB4 antibody) at dilution of 1:100 (under 40x lens).