

Nur für Forschungszwecke

GLI3-Specific Polyklonaler Antikörper



Katalog-Nr.:19949-1-AP

12 Publikationen

Allgemeine Informationen

Katalog-Nr.:
19949-1-AP

Größe:
150ul, Konzentration: 240 µg/ml
durch die Bradford-Methode mit BSA
als Standard;

Wirt:
Kaninchen

Isotyp:
IgG

GenBank-Zugangsnummer:
NM_000168

GeneID (NCBI):
2737

Vollständiger Name:
GLI family zinc finger 3

Berechnete Masse:
170 kDa

Beobachtete Masse:
190 kDa, 83-86 kDa

Reinigungsmethode:
Antigen-Affinitätsreinigung

Empfohlene Verdünnungen:
WB 1:200-1:1000
IP 0.5-4.0 µg für IP und 1:200-1:1000
für WB
IHC 1:20-1:200
IF 1:10-1:100

Anwendungen

Geprüfte Anwendungen:
FC, IF, IHC, IP, WB, ELISA

In Publikationen genannte Anwendungen:
WB

Getestete Reaktivität:
Human, Maus, Ratte

Zitierte Arten:
Human, Maus

Hinweis-IHC: Antigendemaskierung mit TE-Puffer pH 9,0 empfohlen. (*) Wahlweise kann die Antigendemaskierung auch mit Citratpuffer pH 6,0 erfolgen.

Positivkontrollen:

WB : humanes Plazenta-Gewebe, Mauslungengewebe

IP : Mauslungengewebe,

IHC : humanes Hodengewebe, humanes Kolongewebe

IF : HepG2-Zellen,

Hintergrundinformationen

GLI3 belongs to the GLI C2H2-type zinc-finger protein family. GLI3 plays a role in limb and brain development. GLI3 is implicated in the transduction of SHH signal. Defects in GLI3 are the cause of Greig cephalo-poly-syndactyly syndrome (GCPS). Defects in GLI3 are a cause of Pallister-Hall syndrome (PHS). Defects in GLI3 are a cause of type A1/B postaxial polydactyly (PAPA1/PAPB). Defects in GLI3 are a cause of type IV preaxial polydactyly. Defects in GLI3 are the cause of acrocallosal syndrome (ACS). The antibody is specific to GLI3. At the molecular level, Gli3 is translated into a 190-kDa transcriptional activator (Gli3-190) that undergoes proteolytic processing into a truncated 83-kDa repressor (Gli3-83) lacking C-terminal activation domains. (PMID: 16705181)

Bemerkenswerte Veröffentlichungen

Verfasser	Pubmed ID	Journal	Anwendung
Diana Trnski	26385428	Biochim Biophys Acta	WB
Yuqin Men	26549569	Sci Rep	WB
Petar Ozretić	29039491	Int J Oncol	WB

Lagerung

Lagerungsbedingungen:

Bei -20°C lagern. Nach dem Versand ein Jahr lang stabil

Lagerungspuffer:

PBS mit 0.02% Natriumazid und 50% Glycerin pH 7.3.

Aliquotieren ist nicht notwendig bei -20°C Lagerung

*** 20ul-Größen enthalten 0.1% BSA

For technical support and original validation data for this product please contact:

T: 1 (888) 4PTGLAB (1-888-478-4522) (toll free in USA), or 1(312) 455-8498 (outside USA)

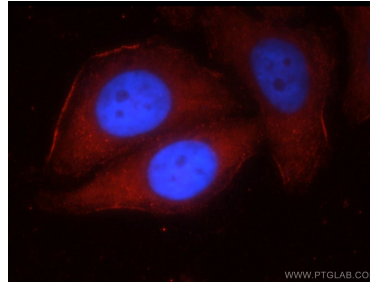
E: proteintech@ptglab.com
W: ptglab.com

This product is exclusively available under Proteintech Group brand and is not available to purchase from any other manufacturer.

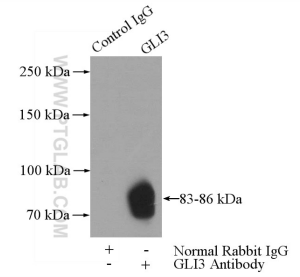
Ausgewählte Validierungsdaten



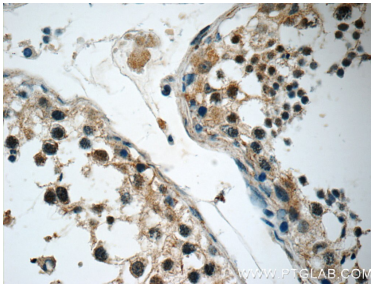
human placenta tissue were subjected to SDS PAGE followed by western blot with 19949-1-AP (GLI3-Specific antibody) at dilution of 1:400 incubated at room temperature for 1.5 hours.



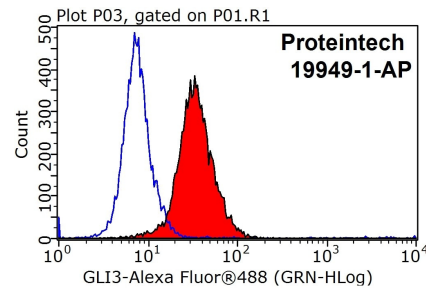
Immunofluorescent analysis of HepG2 cells using 19949-1-AP (GLI3-Specific antibody) at dilution of 1:25 and Rhodamine-Goat anti-Rabbit IgG.



IP Result of anti-GLI3-Specific (IP:19949-1-AP, 4ug; Detection:19949-1-AP 1:300) with mouse lung tissue lysate 4000ug.



Immunohistochemical analysis of paraffin-embedded human testis tissue slide using 19949-1-AP (GLI3-Specific Antibody) at dilution of 1:50.



1X10⁶ HepG2 cells were stained with 0.2ug GLI3-Specific antibody (19949-1-AP, red) and control antibody (blue). Fixed with 90% MeOH blocked with 3% BSA (30 min). Alexa Fluor 488-conjugated AffiniPure Goat Anti-Rabbit IgG(H+L) with dilution 1:1000.