

Nur für Forschungszwecke

IIPR1-specific Polyklonaler Antikörper



Katalog-Nr.:19962-1-AP

17 Publikationen

Allgemeine Informationen

Katalog-Nr.: 19962-1-AP	GenBank-Zugangsnummer: NM_001099952	Reinigungsmethode: Antigen-Affinitätsreinigung
Größe: 150ul , Konzentration: 600 µg/ml von Nanodrop;	GeneID (NCBI): 3708	Empfohlene Verdünnungen: WB 1:200-1:1000 IP 0.5-4.0 ug für IP und 1:150-1:600 für WB
Wirt: Kaninchen	Vollständiger Name: inositol 1,4,5-triphosphate receptor, type 1	IHC 1:50-1:500
Isotyp: IgG	Berechnete Masse: 314 kDa	
	Beobachtete Masse: 290-300 kDa	

Anwendungen

Geprüfte Anwendungen:
FC, IHC, IP, WB,ELISA

In Publikationen genannte Anwendungen:
IHC, IP, WB

Getestete Reaktivität:
Human, Maus, Ratte

Zitierte Arten:
Huhn, Human, Maus, Ratte

Hinweis-IHC: Antigendemaskierung mit TE-Puffer pH 9,0 empfohlen. (*) Wahlweise kann die Antigendemaskierung auch mit Citratpuffer pH 6,0 erfolgen.

Positivkontrollen:

WB : Maushirngewebe, Mauslebergewebe

IP : Maushirngewebe,

IHC : humanes Hirngewebe, humanes Hodengewebe, Maushirngewebe

Hintergrundinformationen

IIPR1, also named as INSP3R1 and IP3R, belongs to the InsP3 receptor family. It is a receptor for inositol 1,4,5-trisphosphate which is a second messenger that mediates the release of intracellular calcium. Defects in IIPR1 are the cause of spinocerebellar ataxia type 15 (SCA15). The antibody has no cross reaction with IIPR2 and IIPR3.

Bemerkenswerte Veröffentlichungen

Verfasser	Pubmed ID	Journal	Anwendung
Yuxiang Wang	35881904	J Cardiovasc Pharmacol	WB,IP
Xiaolong Wang	29800586	Toxicology	WB
Ming Yang	31060900	EBioMedicine	WB

Lagerung

Lagerungsbedingungen:

Bei -20°C lagern. Nach dem Versand ein Jahr lang stabil

Lagerungspuffer:

PBS mit 0.02% Natriumazid und 50% Glycerin pH 7.3.

Aliquotieren ist nicht notwendig bei -20°C Lagerung

***** 20ul-Größen enthalten 0.1% BSA**

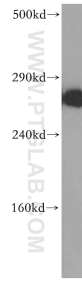
For technical support and original validation data for this product please contact:

T: 1 (888) 4PTGLAB (1-888-478-4522) (toll free in USA), or 1(312) 455-8498 (outside USA)

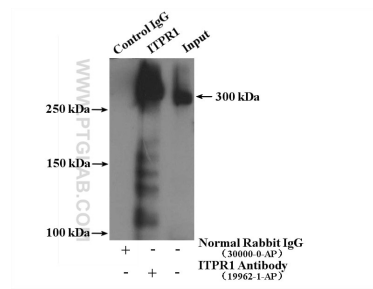
E: proteintech@ptglab.com
W: ptglab.com

This product is exclusively available under Proteintech Group brand and is not available to purchase from any other manufacturer.

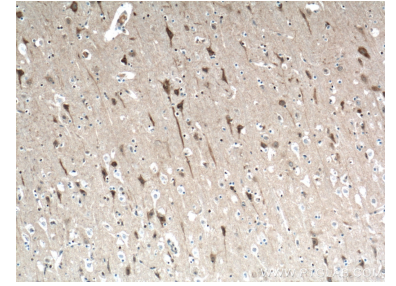
Ausgewählte Validierungsdaten



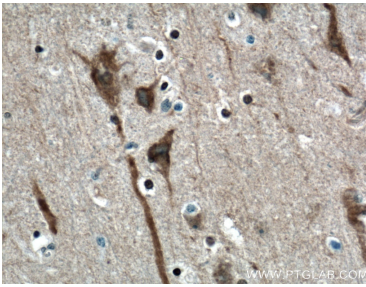
mouse brain tissue were subjected to SDS PAGE followed by western blot with 19962-1-AP (ITPR1-specific antibody) at dilution of 1:300 incubated at room temperature for 1.5 hours.



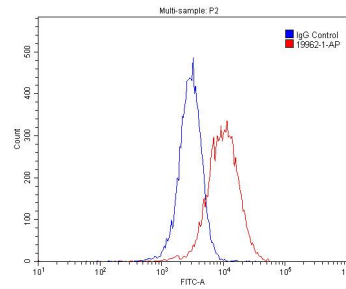
IP result of anti-ITPR1-specific (IP:19962-1-AP, 4ug; Detection:19962-1-AP 1:300) with mouse brain tissue lysate 3160 ug.



Immunohistochemical analysis of paraffin-embedded human brain tissue slide using 19962-1-AP (ITPR1-specific antibody) at dilution of 1:200 (under 10x lens. Heat mediated antigen retrieval with Tris-EDTA buffer (pH 9.0).



Immunohistochemical analysis of paraffin-embedded human brain tissue slide using 19962-1-AP (ITPR1-specific antibody) at dilution of 1:200 (under 40x lens. Heat mediated antigen retrieval with Tris-EDTA buffer (pH 9.0).



1X10⁶ HepG2 cells were stained with 0.2 ug ITPR1-specific antibody (19962-1-AP, red) and control antibody (blue). Cells were fixed with 4% PFA and permeabilized with 0.1% Triton X-100. Alexa Fluor 488-conjugated AffiniPure Goat Anti-Rabbit IgG(H+L) with dilution 1:1500.