

Nur für Forschungszwecke

DNA-PKcs Polyklonaler Antikörper

Katalog-Nr.:19983-1-AP

15 Publikationen



Allgemeine Informationen

Katalog-Nr.:
19983-1-AP

Größe:
150ul, Konzentration: 500 µg/ml von Nanodrop und 287 µg/ml durch die Bradford-Methode mit BSA als Standard;

Wirt:
Kaninchen

Isotyp:
IgG

GenBank-Zugangsnummer:
NM_006904

GeneID (NCBI):
5591

Vollständiger Name:
protein kinase, DNA-activated, catalytic polypeptide

Berechnete Masse:
469 kDa

Beobachtete Masse:
350-460 kDa

Reinigungsmethode:

Antigen-Affinitätsreinigung

Empfohlene Verdünnungen:

WB 1:500-1:3000

Anwendungen

Geprüfte Anwendungen:

WB, ELISA

In Publikationen genannte Anwendungen:

CoIP, IF, IHC, WB

Getestete Reaktivität:

Human

Zitierte Arten:

Human, Ratte

Positivkontrollen:

WB: HeLa-Zellen, MCF-7-Zellen

Hintergrundinformationen

PRKDC, also named as HYRC, HYRC1, DNPK1 and p460, belongs to the PI3/PI4-kinase family. PRKDC is a serine/threonine-protein kinase that acts as a molecular sensor for DNA damage. Involved in DNA nonhomologous end joining (NHEJ), PRKDC is required for double-strand break (DSB) repair and V(D)J recombination. PRKDC must be bound to DNA to express its catalytic properties. It promotes processing of hairpin DNA structures in V(D)J recombination by activation of the hairpin endonuclease artemis (DCLRE1C). It is required to protect and align broken ends of DNA. PRKDC may also act as a scaffold protein to aid the localization of DNA repair proteins to the site of damage. It is found at the ends of chromosomes, suggesting a further role in the maintenance of telomeric stability and the prevention of chromosomal end fusion. It also involved in modulation of transcription. It recognizes the substrate consensus sequence [ST]Q. PRKDC phosphorylates 'Ser-139' of histone variant H2AX/H2AFX, thereby regulating DNA damage response mechanism. It phosphorylates DCLRE1C, c-Abl/ABL1, histone H1, HSPCA, c-jun/JUN, p53/TP53, PARP1, POU2F1, DHX9, SRF, XRCC1, XRCC1, XRCC4, XRCC5, XRCC6, WRN, c-myc/MYC and RFA2. The antibody recognizes the C-term of PRKDC.

Bemerkenswerte Veröffentlichungen

Verfasser	Pubmed ID	Journal	Anwendung
Hong-Yu Tao	36435475	Int J Biol Macromol	WB
Xing Ren	29168129	Hum Cell	WB
Zongpei Guo	32457294	Cell Death Dis	WB

Lagerung

Lagerungsbedingungen:

Bei -20°C lagern. Nach dem Versand ein Jahr lang stabil

Lagerungspuffer:

PBS mit 0.02% Natriumazid und 50% Glycerin pH 7.3.

Aliquotieren ist nicht notwendig bei -20°C Lagerung

*** 20ul-Größen enthalten 0.1% BSA

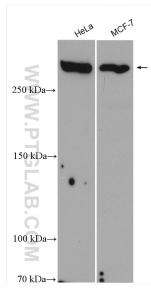
For technical support and original validation data for this product please contact:

T: 1 (888) 4PTGLAB (1-888-478-4522) (toll free in USA), or 1(312) 455-8498 (outside USA)

E: proteintech@ptglab.com
W: ptglab.com

This product is exclusively available under Proteintech Group brand and is not available to purchase from any other manufacturer.

Ausgewählte Validierungsdaten



Various lysates were subjected to SDS PAGE followed by western blot with 19983-1-AP (DNA-PKcs antibody) at dilution of 1:1500 incubated at room temperature for 1.5 hours.