

Nur für Forschungszwecke

LDHA-Specific Polyklonaler Antikörper



Katalog-Nr.:19987-1-AP

Vorgestelltes Produkt

156 Publikationen

Allgemeine Informationen

Katalog-Nr.:
19987-1-AP

Größe:
150ul, Konzentration: 650 µg/ml von
Nanodrop;

Wirt:
Kaninchen

Isotyp:
IgG

GenBank-Zugangsnummer:
NM_005566

GeneID (NCBI):
3939

Vollständiger Name:
lactate dehydrogenase A

Berechnete Masse:
37 kDa

Beobachtete Masse:
32-37 kDa

Reinigungsmethode:

Antigen-Affinitätsreinigung

Empfohlene Verdünnungen:

WB 1:2000-1:10000
IP 0.5-4.0 µg für IP und 1:1000-1:4000
für WB
IHC 1:20-1:200
IF 1:50-1:500

Anwendungen

Geprüfte Anwendungen:

FC, IF, IHC, IP, WB, ELISA

In Publikationen genannte Anwendungen:

IF, IHC, IP, RIP, WB

Getestete Reaktivität:

Human, Maus, Ratte

Zitierte Arten:

Huhn, Human, Maus, Ratte

Hinweis-IHC: Antigendemaskierung mit TE-Puffer pH 9,0 empfohlen. (*) Wahlweise kann die Antigendemaskierung auch mit Citratpuffer pH 6,0 erfolgen.

Positivkontrollen:

WB: HEK-293-Zellen, A431-Zellen, HeLa-Zellen, Jurkat-Zellen, Maushodengewebe, MCF-7-Zellen, NIH/3T3-Zellen, Rattennierengewebe

IP: Mausnierengewebe,

IHC: humanes Herzgewebe, humanes Hodengewebe, humanes Skelettmuskelgewebe

IF: HepG2-Zellen,

Hintergrundinformationen

Lactate dehydrogenase (LDH) is composed of A subunits predominate in skeletal muscle and B subunits are abundantly produced in brain and heart. The LDHA (lactate dehydrogenase A) and COPB1 (coatomer protein complex, subunit beta 1) genes, are involved in energy metabolism and protein transport processes. Both genes might play important roles in muscle development. It has some isoforms with the molecular mass of 27-40 kDa and can form a homotetramer (PMID:11276087). This antibody is specific to LDHA and has no cross reaction to LDHB and LDHC.

Bemerkenswerte Veröffentlichungen

Verfasser	Pubmed ID	Journal	Anwendung
Teresa W-M Fan	36150727	J Immunol	
Yuyu Chen	36127325	Cell Death Dis	WB
Di Huang	30224822	Nat Immunol	

Lagerung

Lagerungsbedingungen:

Bei -20°C lagern. Nach dem Versand ein Jahr lang stabil

Lagerungspuffer:

PBS mit 0.02% Natriumazid und 50% Glycerin pH 7.3.

Aliquotieren ist nicht notwendig bei -20°C Lagerung

*** 20ul-Größen enthalten 0.1% BSA

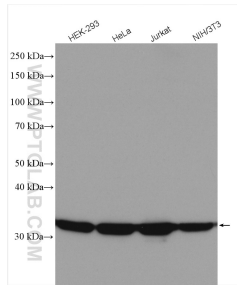
For technical support and original validation data for this product please contact:

T: 1 (888) 4PTGLAB (1-888-478-4522) (toll free in USA), or 1(312) 455-8498 (outside USA)

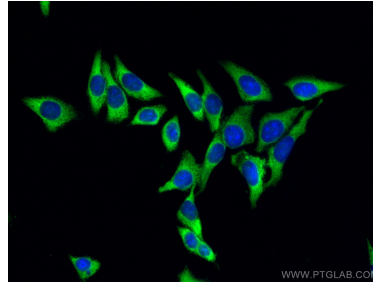
E: proteintech@ptglab.com
W: ptglab.com

This product is exclusively available under Proteintech Group brand and is not available to purchase from any other manufacturer.

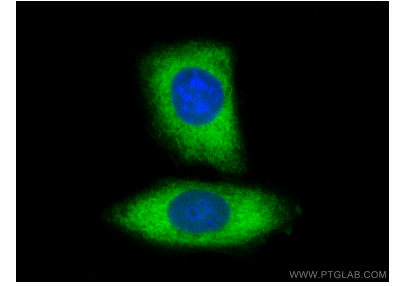
Ausgewählte Validierungsdaten



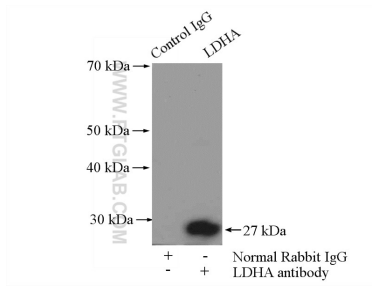
Various lysates were subjected to SDS PAGE followed by western blot with 19987-1-AP (LDHA-Specific antibody) at dilution of 1:5000 incubated at room temperature for 1.5 hours.



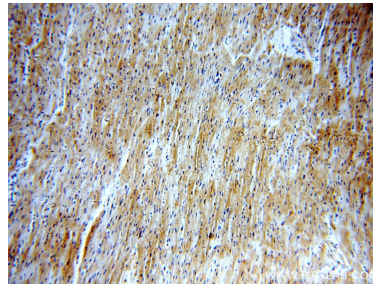
Immunofluorescent analysis of (-20°C Methanol) fixed HepG2 cells using LDHA-Specific antibody (19987-1-AP) at dilution of 1:200 and CoraLite®488-Conjugated AffiniPure Goat Anti-Rabbit IgG(H+L).



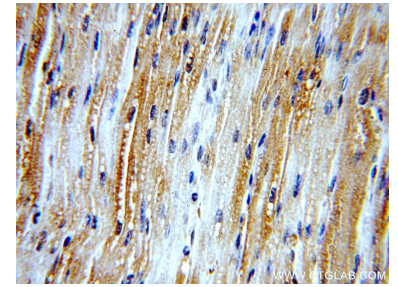
Immunofluorescent analysis of (-20°C Methanol) fixed HepG2 cells using LDHA-Specific antibody (19987-1-AP) at dilution of 1:200 and CoraLite®488-Conjugated AffiniPure Goat Anti-Rabbit IgG(H+L).



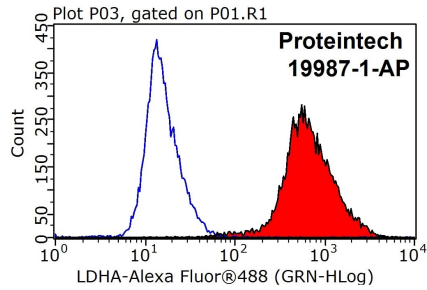
IP Result of anti-LDHA-Specific (IP:19987-1-AP, 4ug; Detection:19987-1-AP 1:2000) with mouse kidney tissue lysate 4000ug.



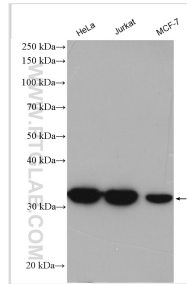
Immunohistochemical analysis of paraffin-embedded human heart using 19987-1-AP (LDHA-Specific antibody) at dilution of 1:100 (under 10x lens).



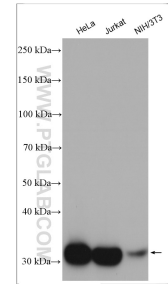
Immunohistochemical analysis of paraffin-embedded human heart using 19987-1-AP (LDHA-Specific antibody) at dilution of 1:100 (under 40x lens).



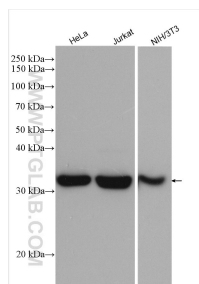
1X10⁶ HepG2 cells were stained with 0.2ug LDHA-Specific antibody (19987-1-AP, red) and control antibody (blue). Fixed with 90% MeOH blocked with 3% BSA (30 min). Alexa Fluor 488-conjugated AffiniPure Goat Anti-Rabbit IgG(H+L) with dilution 1:1000.



Various lysates were subjected to SDS PAGE followed by western blot with 19987-1-AP (LDHA-Specific antibody) at dilution of 1:10000 incubated at room temperature for 1.5 hours.



Various lysates were subjected to SDS PAGE followed by western blot with 19987-1-AP (LDHA-Specific antibody) at dilution of 1:8000 incubated at room temperature for 1.5 hours.



HeLa cells were subjected to SDS PAGE followed by western blot with 19987-1-AP (LDHA-Specific antibody) at dilution of 1:8000 incubated at room temperature for 1.5 hours.