

Nur für Forschungszwecke

# HBA1-Specific Polyklonaler Antikörper

Katalog-Nr.:19990-1-AP



## Allgemeine Informationen

<b>Katalog-Nr.:</b> 19990-1-AP	<b>GenBank-Zugangsnummer:</b> NM_000558	<b>Reinigungsmethode:</b> Antigen-Affinitätsreinigung
<b>Größe:</b> 150ul , Konzentration: 500 µg/ml von Nanodrop und 333 µg/ml durch die Bradford-Methode mit BSA als Standard;	<b>GeneID (NCBI):</b> 3039	<b>Empfohlene Verdünnungen:</b> WB 1:200-1:1000 IF 1:50-1:500
<b>Wirt:</b> Kaninchen	<b>Vollständiger Name:</b> hemoglobin, alpha 1	
<b>Isotyp:</b> IgG	<b>Berechnete Masse:</b> 16 kDa	
	<b>Beobachtete Masse:</b> 14-16 kDa	

## Anwendungen

<b>Geprüfte Anwendungen:</b> IF, WB, ELISA	<b>Positivkontrollen:</b> WB : humanes Herzgewebe, humanes Milzgewebe
<b>Getestete Reaktivität:</b> Human	<b>IF :</b> LNCaP-Zellen,

## Hintergrundinformationen

The hemoglobin molecule is a tetramer consisting of two alpha- and two beta-globin-like chains. HBA1 (hemoglobin alpha chain) protein is a alpha-type chain of hemoglobin encoded by two independent genes (HBA1 and HBA2) whose coding sequences are identical. Two alpha chains coupled with two beta chains constitute the adult hemoglobin (HbA or  $\alpha_2\beta_2$ ). HBA1 is also the component of fetal hemoglobin (HbF or  $\alpha_2\gamma_2$ ). This antibody detects a major band around 14-16 kDa in the western blot analysis of heart tissue and K-562 cells. A higher band around 26-27 kDa can also be observed occasionally, which may represent the dimer form of HBA1 (PMID: 20836851). The antibody is specific to HBA1 and has no cross reaction to other globin member.

## Lagerung

**Lagerungsbedingungen:**  
Bei -20°C lagern. Nach dem Versand ein Jahr lang stabil  
**Lagerungspuffer:**  
PBS mit 0.02% Natriumazid und 50% Glycerin pH 7.3.  
Aliquotieren ist nicht notwendig bei -20°C Lagerung

\*\*\* 20ul-Größen enthalten 0.1% BSA

For technical support and original validation data for this product please contact:

T: 1 (888) 4PTGLAB (1-888-478-4522) (toll free in USA), or 1(312) 455-8498 (outside USA)

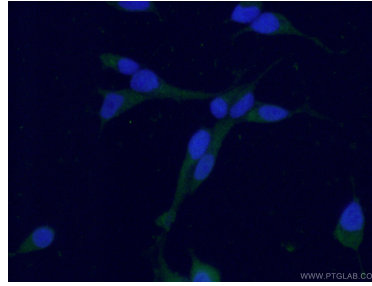
E: proteintech@ptglab.com  
W: ptglab.com

This product is exclusively available under Proteintech Group brand and is not available to purchase from any other manufacturer.

## Ausgewählte Validierungsdaten



human heart tissue were subjected to SDS PAGE followed by western blot with 19990-1-AP (HBA1-Specific antibody) at dilution of 1:300 incubated at room temperature for 1.5 hours.



Immunofluorescent analysis of (-20°C Ethanol) fixed LNCaP cells using 19990-1-AP (HBA1-Specific antibody) at dilution of 1:50 and Alexa Fluor 488-conjugated AffiniPure Goat Anti-Rabbit IgG(H+L).