

Nur für Forschungszwecke

SEC16A Polyklonaler Antikörper

Katalog-Nr.: 20025-1-AP

Vorgestelltes Produkt

1 Publikationen



Allgemeine Informationen

Katalog-Nr.: 20025-1-AP	GenBank-Zugangsnummer: NM_014866	Reinigungsmethode: Antigen-Affinitätsreinigung
Größe: 150ul, Konzentration: 450 µg/ml von Nanodrop;	GeneID (NCBI): 9919	Empfohlene Verdünnungen: WB 1:2000-1:10000 IHC 1:50-1:500 IF 1:50-1:500
Wirt: Kaninchen	Vollständiger Name: SEC16 homolog A (S. cerevisiae)	
Isotyp: IgG	Berechnete Masse: 234 kDa	
	Beobachtete Masse: 250-300 kDa	

Anwendungen

Geprüfte Anwendungen: FC, IF, IHC, WB, ELISA	Positivkontrollen: WB : HEK-293-Zellen, HeLa-Zellen
In Publikationen genannte Anwendungen: IF, WB	IHC : Maus-Pankreasgewebe, IF : A431-Zellen,
Getestete Reaktivität: Human, Maus, Ratte	
Zitierte Arten: Human	
Hinweis-IHC: Antigenmaskierung mit TE-Puffer pH 9,0 empfohlen. (*) Wahlweise kann die Antigenmaskierung auch mit Citratpuffer pH 6,0 erfolgen.	

Hintergrundinformationen

SEC16A, also named as KIAA0310, SEC16 and SEC16L, is required for secretory cargo traffic from the endoplasmic reticulum to the Golgi apparatus. SAR1A-GTP-dependent assembly of SEC16A on the ER membrane forms an organized scaffold defining an ERES. SEC16A is required for normal transitional endoplasmic reticulum (tER) organization.

Bemerkenswerte Veröffentlichungen

Verfasser	Pubmed ID	Journal	Anwendung
Alison Forrester	32080624	Nat Chem Biol	WB,IF

Lagerung

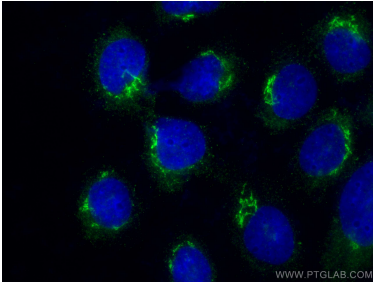
Lagerungsbedingungen:
Bei -20°C lagern. Nach dem Versand ein Jahr lang stabil
Lagerungspuffer:
PBS mit 0.02% Natriumazid und 50% Glycerin pH 7.3.
Aliquotieren ist nicht notwendig bei -20°C Lagerung

*** 20ul-Größen enthalten 0.1% BSA

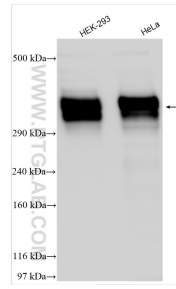
For technical support and original validation data for this product please contact:
T: 1 (888) 4PTGLAB (1-888-478-4522) (toll free in USA), or 1(312) 455-8498 (outside USA)
E: proteintech@ptglab.com
W: ptglab.com

This product is exclusively available under Proteintech Group brand and is not available to purchase from any other manufacturer.

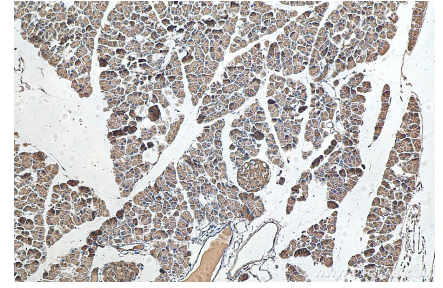
Ausgewählte Validierungsdaten



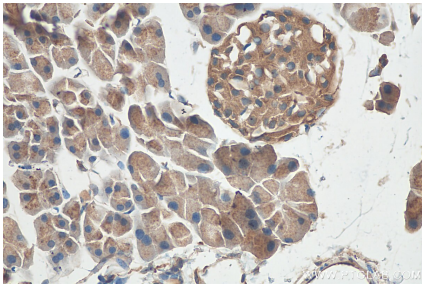
Immunofluorescent analysis of (-20°C Ethanol) fixed A431 cells using SEC16A antibody (20025-1-AP) at dilution of 1:200 and CoraLite®488-Conjugated AffiniPure Goat Anti-Rabbit IgG(H+L).



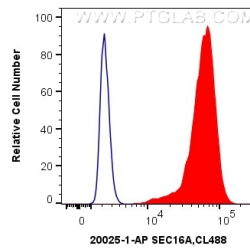
Various lysates were subjected to SDS PAGE followed by western blot with 20025-1-AP (SEC16A antibody) at dilution of 1:5000 incubated at room temperature for 1.5 hours.



Immunohistochemical analysis of paraffin-embedded mouse pancreas tissue slide using 20025-1-AP (SEC16A antibody) at dilution of 1:200 (under 10x lens). Heat mediated antigen retrieval with Tris-EDTA buffer (pH 9.0).



Immunohistochemical analysis of paraffin-embedded mouse pancreas tissue slide using 20025-1-AP (SEC16A antibody) at dilution of 1:200 (under 40x lens). Heat mediated antigen retrieval with Tris-EDTA buffer (pH 9.0).



1×10^6 HEK-293 cells were intracellularly stained with 0.4 μ g Anti-Human SEC16A (20025-1-AP) and CoraLite®488-Conjugated AffiniPure Goat Anti-Rabbit IgG(H+L) at dilution 1:1000 (red), or 0.4 μ g Control Antibody. Cells were fixed with 4% PFA and permeabilized with Flow Cytometry Perm Buffer (PF00011-C).