

## Allgemeine Informationen

<b>Katalog-Nr.:</b> 20047-1-AP	<b>GenBank-Zugangsnummer:</b> NM_053002	<b>Reinigungsmethode:</b> Antigen-Affinitätsreinigung
<b>Größe:</b> 150ul , Konzentration: 300 µg/ml von Nanodrop und 333 µg/ml durch die Bradford-Methode mit BSA als Standard;	<b>GeneID (NCBI):</b> 116931	<b>Empfohlene Verdünnungen:</b> WB 1:500-1:1000
<b>Wirt:</b> Kaninchen	<b>Vollständiger Name:</b> mediator complex subunit 12-like	
<b>Isotyp:</b> IgG	<b>Berechnete Masse:</b> 240 kDa	
	<b>Beobachtete Masse:</b> 260-280 kDa	

## Anwendungen

<b>Geprüfte Anwendungen:</b> WB, ELISA	<b>Positivkontrollen:</b> WB : Mauslebergewebe,
<b>Getestete Reaktivität:</b> Maus	

## Hintergrundinformationen

MED12L, also named as KIAA1635, TNRC11L, TRALP and TRALPUSH, belongs to the Mediator complex subunit 12 family. MED12L may be a component of the Mediator complex, a coactivator involved in the regulated transcription of nearly all RNA polymerase II-dependent genes. MED12L is a mediator functions as a bridge to convey information from gene-specific regulatory proteins to the basal RNA polymerase II transcription machinery. MED12L is recruited to promoters by direct interactions with regulatory proteins and serves as a scaffold for the assembly of a functional preinitiation complex with RNA polymerase II and the general transcription factors. The antibody can recognize all the isoform of MED12L. The antibody has no cross reaction to MED12.

## Lagerung

**Lagerungsbedingungen:**  
Bei -20°C lagern. Nach dem Versand ein Jahr lang stabil  
**Lagerungspuffer:**  
PBS mit 0.02% Natriumazid und 50% Glycerin pH 7.3.  
**Aliquotieren ist nicht notwendig bei -20°C Lagerung**

**\*\*\* 20ul-Größen enthalten 0.1% BSA**

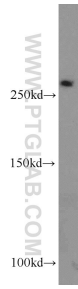
For technical support and original validation data for this product please contact:

T: 1 (888) 4PTGLAB (1-888-478-4522) (toll free in USA), or 1(312) 455-8498 (outside USA)

E: [proteintech@ptglab.com](mailto:proteintech@ptglab.com)  
W: [ptglab.com](http://ptglab.com)

**This product is exclusively available under Proteintech Group brand and is not available to purchase from any other manufacturer.**

## Ausgewählte Validierungsdaten



mouse liver tissue were subjected to SDS PAGE followed by western blot with 20047-1-AP (MED12L antibody) at dilution of 1:500 incubated at room temperature for 1.5 hours.