

Nur für Forschungszwecke

RIMS1-Specific Polyklonaler Antikörper

Katalog-Nr.: 20092-1-AP



Allgemeine Informationen

Katalog-Nr.:
20092-1-AP

Größe:
150ul, Konzentration: 133 µg/ml
durch die Bradford-Methode mit BSA
als Standard;

Wirt:
Kaninchen

Isotyp:
IgG

GenBank-Zugangsnummer:
NM_014989

GeneID (NCBI):
22999

Vollständiger Name:
regulating synaptic membrane
exocytosis 1

Berechnete Masse:
189 kDa

Reinigungsmethode:

Antigen-Affinitätsreinigung

Anwendungen

Geprüfte Anwendungen:
IHC, ELISA

Getestete Reaktivität:
Human

Hintergrundinformationen

RIMS1, also named as KIAA0340, RAB3IP2 and RIM1, is a rab effector involved in exocytosis. It may act as scaffold protein that regulates neurotransmitter release at the active zone. It is essential for maintaining normal probability of neurotransmitter release and for regulating release during short-term synaptic plasticity. Defects in RIMS1 may be a cause of cone-rod dystrophy type 7 (CORD7). This antibody is specific to RIMS1.

Lagerung

Lagerungsbedingungen:

Bei -20°C lagern. Nach dem Versand ein Jahr lang stabil

Lagerungspuffer:

PBS mit 0.02% Natriumazid und 50% Glycerin pH 7.3.

Aliquotieren ist nicht notwendig bei -20°C Lagerung

***** 20ul-Größen enthalten 0.1% BSA**

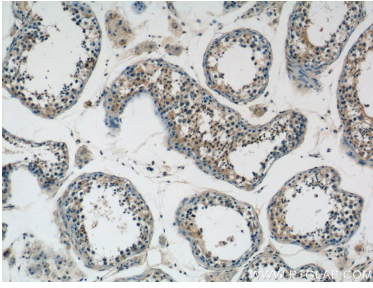
For technical support and original validation data for this product please contact:

T: 1 (888) 4PTGLAB (1-888-478-4522) (toll free
in USA), or 1(312) 455-8498 (outside USA)

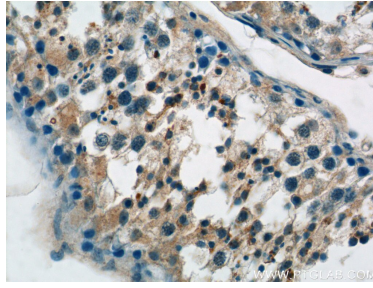
E: proteintech@ptglab.com
W: ptglab.com

This product is exclusively available under Proteintech Group brand and is not available to purchase from any other manufacturer.

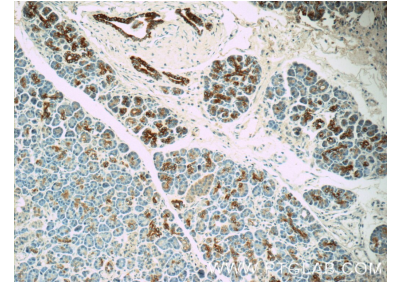
Ausgewählte Validierungsdaten



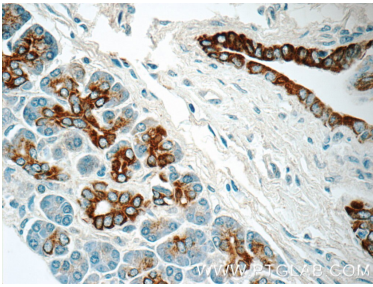
Immunohistochemical analysis of paraffin-embedded human testis tissue slide using 20092-1-AP (RIMS1-Specific Antibody) at dilution of 1:50 (under 10x lens).



Immunohistochemical analysis of paraffin-embedded human testis tissue slide using 20092-1-AP (RIMS1-Specific Antibody) at dilution of 1:50 (under 40x lens).



Immunohistochemical analysis of paraffin-embedded human pancreas tissue slide using 20092-1-AP (RIMS1-Specific Antibody) at dilution of 1:50 (under 10x lens).



Immunohistochemical analysis of paraffin-embedded human pancreas tissue slide using 20092-1-AP (RIMS1-Specific Antibody) at dilution of 1:50 (under 40x lens).