

## Allgemeine Informationen

**Katalog-Nr.:**

20121-1-AP

**Größe:**

150ul, Konzentration: 1300 µg/ml von 10930

Nanodrop und 487 µg/ml durch die Bradford-Methode mit BSA als Standard;

**Wirt:**

Kaninchen

**Isotyp:**

IgG

**Immunogen Katalognummer:**

AG13699

**GenBank-Zugangsnummer:**

BC047767

**GeneID (NCBI):**

10930

**Vollständiger Name:**

apolipoprotein B mRNA editing enzyme, catalytic polypeptide-like 2

**Berechnete Masse:**

26 kDa

**Beobachtete Masse:**

25-30 kDa

**Reinigungsmethode:**

Antigen-Affinitätsreinigung

**Empfohlene Verdünnungen:**

WB 1:5000-1:50000

IP 0.5-4.0 µg für IP und 1:500-1:1000

für WB

IHC 1:50-1:500

## Anwendungen

**Geprüfte Anwendungen:**

IHC, IP, WB, ELISA

**Getestete Reaktivität:**

Human, Maus, Ratte

**Hinweis-IHC: Antigendemaskierung mit TE-Puffer pH 9,0 empfohlen. (\*) Wahlweise kann die Antigendemaskierung auch mit Citratpuffer pH 6,0 erfolgen.**

**Positivkontrollen:**

**WB:** Mausherzgewebe, Maus-Skelettmuskelgewebe, Rattenherzgewebe, Ratten-Skelettmuskelgewebe

**IP:** Maus-Skelettmuskelgewebe,

**IHC:** Mausherzgewebe, humanes Herzgewebe

## Hintergrundinformationen

APOBEC2, also named as ARCD1 and ARP1, is a member of the activation-induced deaminase/apolipoprotein B mRNA editing enzyme catalytic polypeptide (APOBEC) cytidine deaminase family expressed in differentiated skeletal and cardiac muscle. APOBEC family members have diverse roles by their ability to edit DNA and/or RNA. Apobec2 is one of the oldest members of the APOBEC family, along with the lymphoid-specific activation-induced deaminase. Unlike other APOBEC family members, the enzymatic activity and substrate of Apobec2 have not been fully demonstrated, and its biologic functions remain unknown. It can be detected as 25-30 kDa.

## Bemerkenswerte Veröffentlichungen

Verfasser	Pubmed ID	Journal	Anwendung
Aimei Li	31485598	Int J Oncol	

## Lagerung

**Lagerungsbedingungen:**

Bei -20°C lagern. Nach dem Versand ein Jahr lang stabil

**Lagerungspuffer:**

PBS mit 0.02% Natriumazid und 50% Glycerin pH 7.3.

Aliquotieren ist nicht notwendig bei -20°C Lagerung

\*\*\* 20ul-Größen enthalten 0.1% BSA

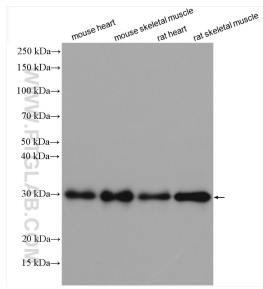
For technical support and original validation data for this product please contact:

T: 1 (888) 4PTGLAB (1-888-478-4522) (toll free in USA), or 1(312) 455-8498 (outside USA)

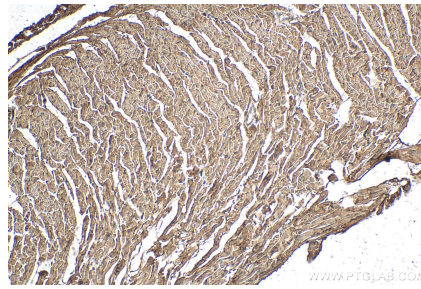
E: proteintech@ptglab.com  
W: ptglab.com

This product is exclusively available under Proteintech Group brand and is not available to purchase from any other manufacturer.

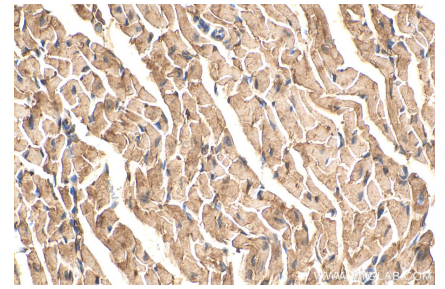
## Ausgewählte Validierungsdaten



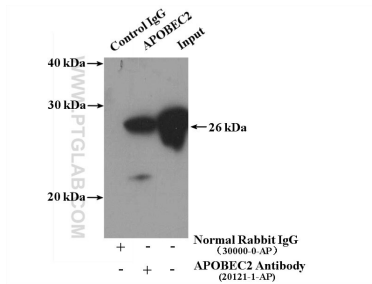
Various lysates were subjected to SDS PAGE followed by western blot with 20121-1-AP (APOBEC2 antibody) at dilution of 1:20000 incubated at room temperature for 1.5 hours.



Immunohistochemical analysis of paraffin-embedded mouse heart tissue slide using 20121-1-AP (APOBEC2 antibody) at dilution of 1:200 (under 10x lens). Heat mediated antigen retrieval with Tris-EDTA buffer (pH 9.0).



Immunohistochemical analysis of paraffin-embedded mouse heart tissue slide using 20121-1-AP (APOBEC2 antibody) at dilution of 1:200 (under 40x lens). Heat mediated antigen retrieval with Tris-EDTA buffer (pH 9.0).



IP Result of anti-APOBEC2 (IP:20121-1-AP, 4ug; Detection:20121-1-AP 1:500) with mouse skeletal muscle tissue lysate 4000ug.