

Allgemeine Informationen

Katalog-Nr.: 20139-1-AP	GenBank-Zugangsnummer: BC026317	Reinigungsmethode: Antigen-Affinitätsreinigung
Größe: 150ul , Konzentration: 700 µg/ml von Nanodrop;	GeneID (NCBI): 6566	Empfohlene Verdünnungen: WB 1:3000-1:20000 IP 0.5-4.0 ug für IP und 1:200-1:1000 für WB
Wirt: Kaninchen	Vollständiger Name: solute carrier family 16, member 1 (monocarboxylic acid transporter 1)	IHC 1:300-1:1200 IF 1:50-1:500
Isotyp: IgG	Berechnete Masse: 500 aa, 54 kDa	
Immunogen Katalognummer: AG14098	Beobachtete Masse: 38-45 kDa	

Anwendungen

Geprüfte Anwendungen:

IF, IHC, IP, WB, ELISA

In Publikationen genannte Anwendungen:

FC, IF, IHC, WB

Getestete Reaktivität:

Human, Maus

Zitierte Arten:

Human, Maus, Ratte, Rind

Hinweis-IHC: Antigenmaskierung mit TE-Puffer pH 9,0 empfohlen. (*) Wahlweise kann die Antigenmaskierung auch mit Citratpuffer pH 6,0 erfolgen.

Positivkontrollen:

WB: BxPC-3-Zellen, HeLa-Zellen, HepG2-Zellen, Jurkat-Zellen, Maushirngewebe, Mauslebergewebe

IP: Raji-Zellen,

IHC: humanes Kolonkarzinomgewebe, humanes Mammakarzinomgewebe, humanes Zervixkarzinomgewebe

IF: HeLa-Zellen,

Hintergrundinformationen

MCT1, the SLC16A1 gene product, is a trans-membrane symporter involved in lactate and pyruvate transportation. It plays an important role in lactic acid transport and H⁺ clearance in cancer cells. MCT overexpression had been observed in various cancers and may play an important role in tumorigenesis. Two isoforms of MCT1 exist due to the alternative splicing, with predicted MW of 54 kDa and 46 kDa, respectively. While western blot analysis detected MCT1 at an apparent molecular mass of 40-50 kDa.

Bemerkenswerte Veröffentlichungen

Verfasser	Pubmed ID	Journal	Anwendung
Yantuanjin Ma	36372042	Placenta	IHC
Xiaoxin Zhang	33204328	Theranostics	WB,IHC
Akihiro Ryuge	34676828	JCI Insight	WB,IF

Lagerung

Lagerungsbedingungen:

Bei -20°C lagern. Nach dem Versand ein Jahr lang stabil

Lagerungspuffer:

PBS mit 0.02% Natriumazid und 50% Glycerin pH 7.3.

Aliquotieren ist nicht notwendig bei -20°C Lagerung

*** 20ul-Größen enthalten 0.1% BSA

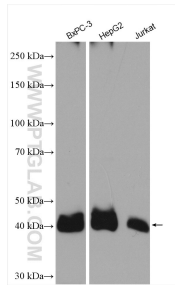
For technical support and original validation data for this product please contact:

T: 1 (888) 4PTGLAB (1-888-478-4522) (toll free in USA), or 1(312) 455-8498 (outside USA)

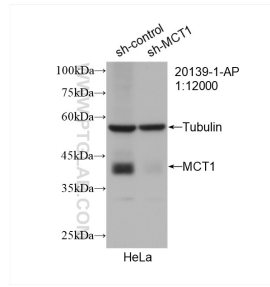
E: proteintech@ptglab.com
W: ptglab.com

This product is exclusively available under Proteintech Group brand and is not available to purchase from any other manufacturer.

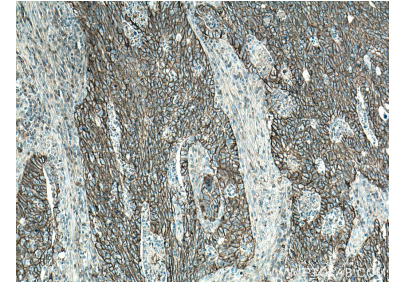
Ausgewählte Validierungsdaten



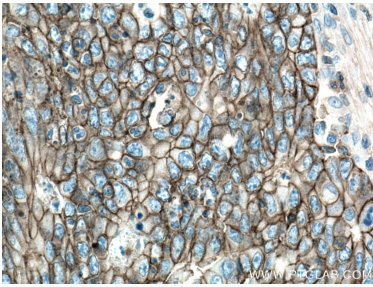
Various lysates were subjected to SDS PAGE followed by western blot with 20139-1-AP (MCT1 antibody) at dilution of 1:10000 incubated at room temperature for 1.5 hours.



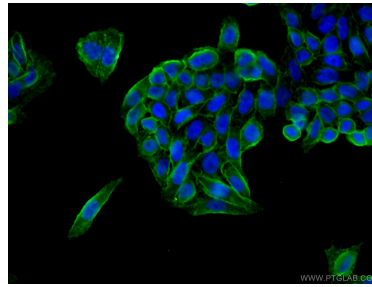
WB result of MCT1 antibody (20139-1-AP; 1:12000; incubated at room temperature for 1.5 hours) with sh-Control and sh-MCT1 transfected HeLa cells.



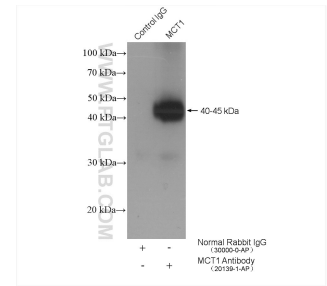
Immunohistochemical analysis of paraffin-embedded human colon cancer tissue slide using 20139-1-AP (MCT1 antibody) at dilution of 1:600 (under 10x lens. Heat mediated antigen retrieval with Tris-EDTA buffer (pH 9.0).



Immunohistochemical analysis of paraffin-embedded human colon cancer tissue slide using 20139-1-AP (MCT1 antibody) at dilution of 1:600 (under 40x lens. Heat mediated antigen retrieval with Tris-EDTA buffer (pH 9.0).



Immunofluorescent analysis of (4% PFA) fixed HeLa cells using 20139-1-AP (MCT1 antibody) at dilution of 1:50 and CoralLite488-Conjugated AffiniPure Goat Anti-Rabbit IgG(H+L).



IP result of anti-MCT1 (IP:20139-1-AP, 4ug; Detection:20139-1-AP 1:300) with Raji cells lysate 3600 ug.