

Allgemeine Informationen

Katalog-Nr.:
20170-1-AP

Größe:
150ul, Konzentration: 1400 µg/ml von 2744
Nanodrop und 707 µg/ml durch die
Bradford-Methode mit BSA als
Standard;

Wirt:
Kaninchen

Isotyp:
IgG

Immunogen Katalognummer:
AG14002

GenBank-Zugangsnummer:
BC038507

GeneID (NCBI):

Vollständiger Name:
glutaminase

Berechnete Masse:
669 aa, 73 kDa

Beobachtete Masse:
66 kDa

Reinigungsmethode:

Antigen-Affinitätsreinigung

Empfohlene Verdünnungen:

WB 1:500-1:1000
IP 0.5-4.0 µg für IP und 1:500-1:1000
für WB
IHC 1:20-1:200
IF 1:20-1:400

Anwendungen

Geprüfte Anwendungen:

IF, IHC, IP, WB, ELISA

In Publikationen genannte Anwendungen:

CoIP, IF, IHC, WB

Getestete Reaktivität:

Human, Maus, Ratte

Zitierte Arten:

Human, Maus, Ratte

Hinweis-IHC: Antigendemaskierung mit TE-Puffer pH 9,0 empfohlen. (*) Wahlweise kann die Antigendemaskierung auch mit Citratpuffer pH 6,0 erfolgen.

Positivkontrollen:

WB : HEK-293-Zellen, HeLa-Zellen, humanes
Herzgewebe, humanes Hirngewebe, K-562-Zellen,
Maushirngewebe, Mausnierengewebe,
Rattenhirngewebe

IP : HEK-293-Zellen,

IHC : humanes Nierengewebe, humanes Hirngewebe,
Mausnierengewebe

IF : HEK-293-Zellen,

Hintergrundinformationen

GLS, also named as GLS1 and KIAA0838, belongs to the glutaminase family. It catalyzes the first reaction in the primary pathway for the renal catabolism of glutamine. Glutaminase-, glutamate-, and taurine-immunoreactive neurons develop neurofibrillary tangles in Alzheimer's disease. The glutaminase band in AA/C1 cells is more intense than in HT29 cells, in accordance with measurements of glutaminase activity, and had the same molecular mass of approx 63 kDa. The bands for both cell lines are clearly different in size from both rat liver glutaminase (58 kDa) and rat kidney glutaminase (65 kDa)(PMID:12408749). It also reveals a molecular weight of 83-84 kDa as a phosphate-dependent glutaminase(PMID:447624;7512428). It has 3 isoforms produced by alternative splicing named as KGA, GAM, GAC. This antibody is specific to KGA.

Bemerkenswerte Veröffentlichungen

Verfasser	Pubmed ID	Journal	Anwendung
Daniel Herranz	26390244	Nat Med	WB
Kalpana D Acharya	28955722	eNeuro	WB
Niki Marie Zacharias	29170516	Sci Rep	WB

Lagerung

Lagerungsbedingungen:

Bei -20°C lagern. Nach dem Versand ein Jahr lang stabil

Lagerungspuffer:

PBS mit 0.02% Natriumazid und 50% Glycerin pH 7.3.

Aliquotieren ist nicht notwendig bei -20°C Lagerung

*** 20ul-Größen enthalten 0.1% BSA

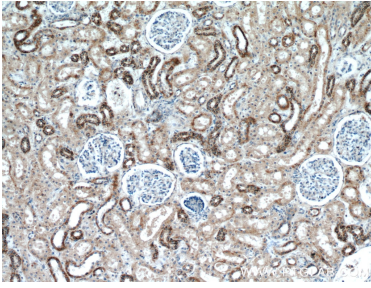
For technical support and original validation data for this product please contact:

T: 1 (888) 4PTGLAB (1-888-478-4522) (toll free
in USA), or 1(312) 455-8498 (outside USA)

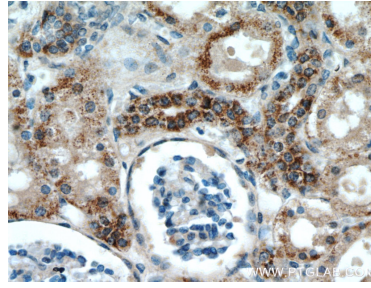
E: proteintech@ptglab.com
W: ptglab.com

This product is exclusively available under Proteintech Group brand and is not available to purchase from any other manufacturer.

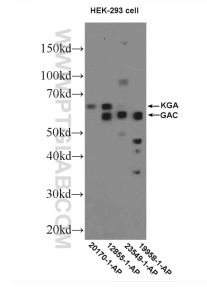
Ausgewählte Validierungsdaten



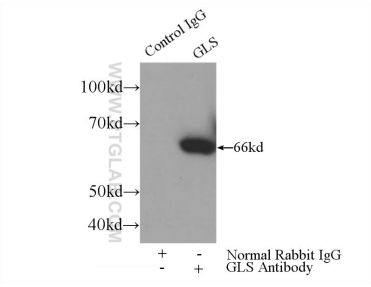
Immunohistochemical analysis of paraffin-embedded human kidney using 20170-1-AP (KGA-Specific antibody) at dilution of 1:100 (under 10x lens).



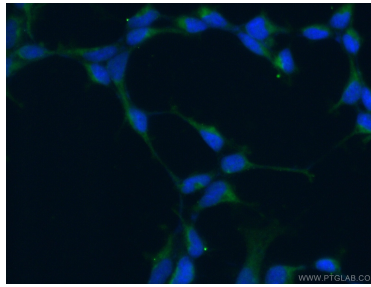
Immunohistochemical analysis of paraffin-embedded human kidney using 20170-1-AP (KGA-Specific antibody) at dilution of 1:100 (under 40x lens).



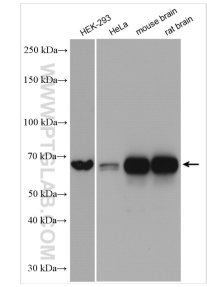
HEK-293 cells were subjected to SDS PAGE followed by western blot with 20170-1-AP (KGA-Specific antibody) at dilution of 1:600 incubated at 4 degree celsius over night.



IP Result of anti-KGA-Specific (IP:20170-1-AP, 3ug; Detection:20170-1-AP 1:800) with HEK-293 cells lysate 3200ug.



Immunofluorescent analysis of (-20°C Ethanol) fixed HEK-293 cells using 20170-1-AP (KGA-Specific antibody) at dilution of 1:50 and Alexa Fluor 488-conjugated AffiniPure Goat Anti-Rabbit IgG(H+L).



Various lysates were subjected to SDS PAGE followed by western blot with 20170-1-AP (KGA-Specific antibody) at dilution of 1:8000 incubated at room temperature for 1.5 hours.