

Allgemeine Informationen

Katalog-Nr.:
20226-1-AP

Größe:

150ul , Konzentration: 350 µg/ml von 375 Nanodrop und 320 µg/ml durch die Bradford-Methode mit BSA als Standard;

Wirt:

Kaninchen

Isotyp:

IgG

GenBank-Zugangsnummer:

NM_001658

GeneID (NCBI):

375

Vollständiger Name:

ADP-ribosylation factor 1

Berechnete Masse:

21 kDa

Beobachtete Masse:

18-21 kDa

Reinigungsmethode:

Antigen-Affinitätsreinigung

Empfohlene Verdünnungen:

WB 1:1000-1:4000

IP 0.5-4.0 µg für IP und 1:500-1:1000

für WB

IHC 1:50-1:500

IF 1:50-1:500

Anwendungen

Geprüfte Anwendungen:

FC, IF, IHC, IP, WB, ELISA

In Publikationen genannte Anwendungen:

IF, WB

Getestete Reaktivität:

Human, Maus

Zitierte Arten:

Human, Maus

Hinweis-IHC: Antigendemaskierung mit TE-Puffer pH 9,0 empfohlen. (*) Wahlweise kann die Antigendemaskierung auch mit Citratpuffer pH 6,0 erfolgen.

Positivkontrollen:

WB : DU 145-Zellen, HEK-293-Zellen, HeLa-Zellen, HepG2-Zellen, Maushirngewebe, SKOV-3-Zellen

IP : HeLa-Zellen,

IHC : humanes Mammakarzinomgewebe, humanes Hirngewebe, humanes Kolonkarzinomgewebe, humanes Lebergewebe

IF : HepG2-Zellen,

Hintergrundinformationen

ADP-ribosylation factors (ARFs) are members of the ARF family of GTP-binding proteins of the Ras superfamily, with 20kda protein size. ARFs bind and regulate GTP/GDP cycle by alternating between the active GTP-bound and inactive GDP-bound conformations. ARF family proteins are essential and ubiquitous in eukaryotes. Six highly conserved members of the family have been identified in mammalian cells. They function in vesicular traffic and actin remodelling and other bioprocesses in cells. The ARF 1 protein is localized to the Golgi apparatus and has a central role in intra-Golgi transport. It mainly functions in coat recruitment.(PMID: 7759471, PMID: 16042562). The antibody is specific to ARF 1.

Bemerkenswerte Veröffentlichungen

Verfasser	Pubmed ID	Journal	Anwendung
Tao Wang	28985237	PLoS Pathog	WB
Yuan Yuan Su	29420297	J Cell Sci	WB,IF
Miwa Sasai	28604719	Nat Immunol	WB

Lagerung

Lagerungsbedingungen:

Bei -20°C lagern. Nach dem Versand ein Jahr lang stabil

Lagerungspuffer:

PBS mit 0.02% Natriumazid und 50% Glycerin pH 7.3.

Aliquotieren ist nicht notwendig bei -20°C Lagerung

***** 20ul-Größen enthalten 0.1% BSA**

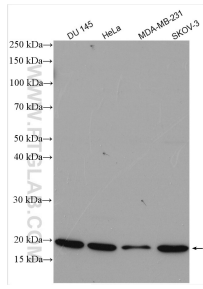
For technical support and original validation data for this product please contact:

T: 1 (888) 4PTGLAB (1-888-478-4522) (toll free in USA), or 1(312) 455-8498 (outside USA)

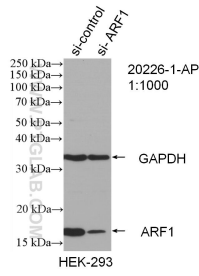
E: proteintech@ptglab.com
W: ptglab.com

This product is exclusively available under Proteintech Group brand and is not available to purchase from any other manufacturer.

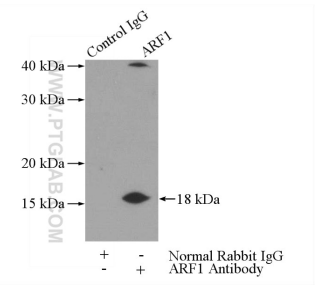
Ausgewählte Validierungsdaten



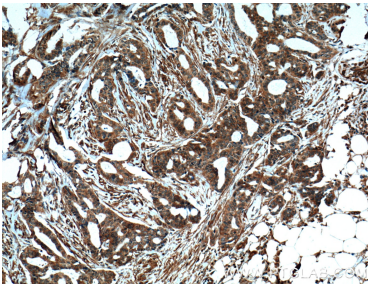
Various lysates were subjected to SDS PAGE followed by western blot with 20226-1-AP (ARF1 antibody) at dilution of 1:2000 incubated at room temperature for 1.5 hours.



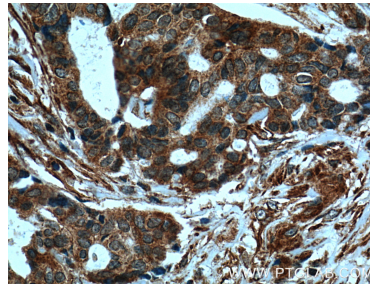
WB result of ARF1 antibody (20226-1-AP; 1:1000; incubated at room temperature for 1.5 hours) with sh-Control and sh-ARF1 transfected HEK-293 cells.



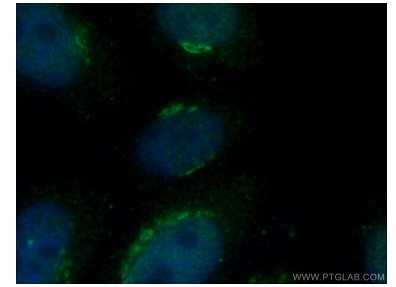
IP Result of anti-ARF1 (IP:20226-1-AP, 3ug; Detection:20226-1-AP 1:600) with HeLa cells lysate 2440ug.



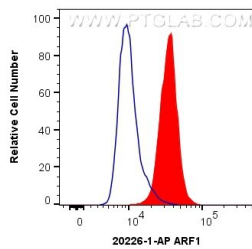
Immunohistochemical analysis of paraffin-embedded human breast cancer tissue slide using 20226-1-AP (ARF1 Antibody) at dilution of 1:200 (under 10x lens). Heat mediated antigen retrieval with Tris-EDTA buffer (pH 9.0).



Immunohistochemical analysis of paraffin-embedded human breast cancer tissue slide using 20226-1-AP (ARF1 Antibody) at dilution of 1:200 (under 40x lens). Heat mediated antigen retrieval with Tris-EDTA buffer (pH 9.0).



Immunofluorescent analysis of (4% PFA) fixed HepG2 cells using 20226-1-AP (ARF1 antibody) at dilution of 1:50 and Alexa Fluor 488-conjugated AffiniPure Goat Anti-Rabbit IgG(H+L).



1x10⁶ HeLa cells were intracellularly stained with 0.4 ug Anti-Human ARF1 (20226-1-AP) and CoraLite@488-Conjugated AffiniPure Goat Anti-Rabbit IgG(H+L) at dilution 1:1000 (red), or 0.4 ug Control Antibody. Cells were fixed with 4% PFA and permeabilized with Flow Cytometry Perm Buffer (PF00011-C).