

Nur für Forschungszwecke

RAB11A-Specific Polyklonaler Antikörper



Katalog-Nr.: 20229-1-AP

Vorgestelltes Produkt

14 Publikationen

Allgemeine Informationen

Katalog-Nr.:
20229-1-AP

Größe:
150ul, Konzentration: 300 µg/ml von
Nanodrop und 253 µg/ml durch die
Bradford-Methode mit BSA als
Standard;

Wirt:
Kaninchen

Isotyp:
IgG

GenBank-Zugangsnummer:
NM_004663

GeneID (NCBI):
8766

Vollständiger Name:
RAB11A, member RAS oncogene
family

Berechnete Masse:
24 kDa

Beobachtete Masse:
24 kDa

Reinigungsmethode:

Antigen-Affinitätsreinigung

Empfohlene Verdünnungen:

WB 1:500-1:1000
IP 0.5-4.0 µg für IP und 1:500-1:1000
für WB
IHC 1:50-1:500
IF 1:50-1:500

Anwendungen

Geprüfte Anwendungen:

IF, IHC, IP, WB, ELISA

In Publikationen genannte Anwendungen:

IF, IHC, WB

Getestete Reaktivität:

Human, Maus, Ratte

Zitierte Arten:

Human, Hund, Maus, Ratte

Hinweis-IHC: Antigenmaskierung mit TE-Puffer pH 9,0 empfohlen. (*) Wahlweise kann die Antigenmaskierung auch mit Citratpuffer pH 6,0 erfolgen.

Positivkontrollen:

WB: HEK-293T-Zellen, HeLa-Zellen, humanes Hirngewebe, Maus-Kolontgewebe, Mauslungengewebe, MCF-7-Zellen, PC-12-Zellen, Rattenhirngewebe, SH-SY5Y-Zellen

IP: SH-SY5Y-Zellen,

IHC: humanes Dünndarmgewebe,

IF: HeLa-Zellen, IMCD3-Zellen

Hintergrundinformationen

Rab11a, Rab11b and Rab25 comprise a subfamily of Rab proteins that belong to the Ras-related small GTPase protein superfamily (PMID: 8074219, PMID: 10708602). Rab11 proteins are involved in endocytosis and plasma membrane recycling in non-polarized and polarized cells (PMID: 8638719, PMID: 8922376). Rab11a and Rab11b are ubiquitously expressed in most tissues, while Rab25 is only expressed in epithelial cells. Rab11a is known to regulate the recycling of internalized cell surface proteins and receptors from the early endosome through the trans-Golgi network (PMID: 11121436, PMID: 9600939). The antibody is specific to RAB11A, and has no cross reaction to RAB11B.

Bemerkenswerte Veröffentlichungen

Verfasser	Pubmed ID	Journal	Anwendung
Ketaki Ganti	34473799	PLoS Pathog	IF
Hiroshi Gomi	28914590	J Histochem Cytochem	WB,IHC
Oliva Palander	33124112	FASEB J	IF

Lagerung

Lagerungsbedingungen:

Bei -20°C lagern. Nach dem Versand ein Jahr lang stabil

Lagerungspuffer:

PBS mit 0.02% Natriumazid und 50% Glycerin pH 7.3.

Aliquotieren ist nicht notwendig bei -20°C Lagerung

*** 20ul-Größen enthalten 0.1% BSA

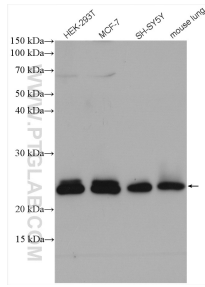
For technical support and original validation data for this product please contact:

T: 1 (888) 4PTGLAB (1-888-478-4522) (toll free in USA), or 1(312) 455-8498 (outside USA)

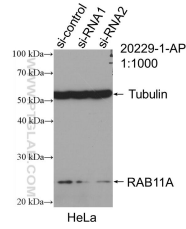
E: proteintech@ptglab.com
W: ptglab.com

This product is exclusively available under Proteintech Group brand and is not available to purchase from any other manufacturer.

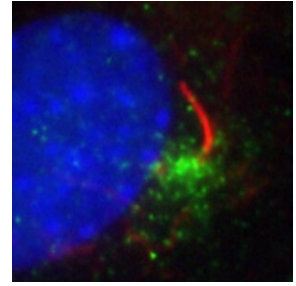
Ausgewählte Validierungsdaten



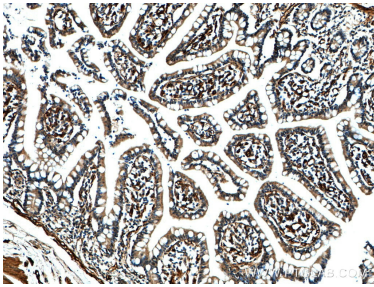
Various lysates were subjected to SDS PAGE followed by western blot with 20229-1-AP (RAB11A-Specific antibody) at dilution of 1:600 incubated at room temperature for 1.5 hours.



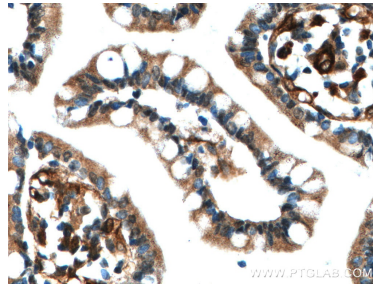
WB result of RAB11A-Specific antibody (20229-1-AP; 1:1000; incubated at room temperature for 1.5 hours) with sh-Control and sh-RAB11A-Specific transfected HeLa cells.



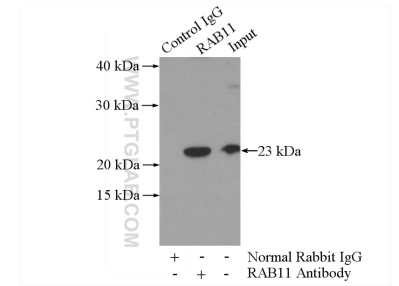
IF result of 20229-1-AP (anti-RAB11A-Specific, Green) in ciliated IMCD3 cells by Dr. Seongjin Seo. (Red is the primary cilium, and blue is the nucleus).



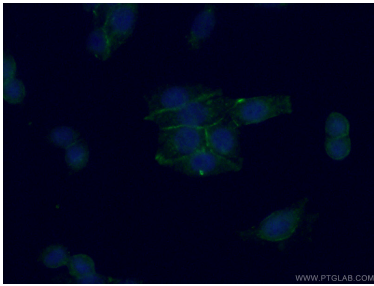
Immunohistochemical analysis of paraffin-embedded human small intestine tissue slide using 20229-1-AP (RAB11A-Specific antibody) at dilution of 1:200 (under 10x lens).



Immunohistochemical analysis of paraffin-embedded human small intestine tissue slide using 20229-1-AP (RAB11A-Specific antibody) at dilution of 1:200 (under 40x lens).



IP Result of anti-RAB11A-Specific (IP:20229-1-AP, 3ug; Detection:20229-1-AP 1:700) with SH-SY5Y cells lysate 3000ug.



Immunofluorescent analysis of (-20°C Ethanol) fixed HeLa cells using 20229-1-AP (RAB11A-Specific antibody) at dilution of 1:50 and Alexa Fluor 488-Conjugated AffiniPure Goat Anti-Rabbit IgG(H+L).